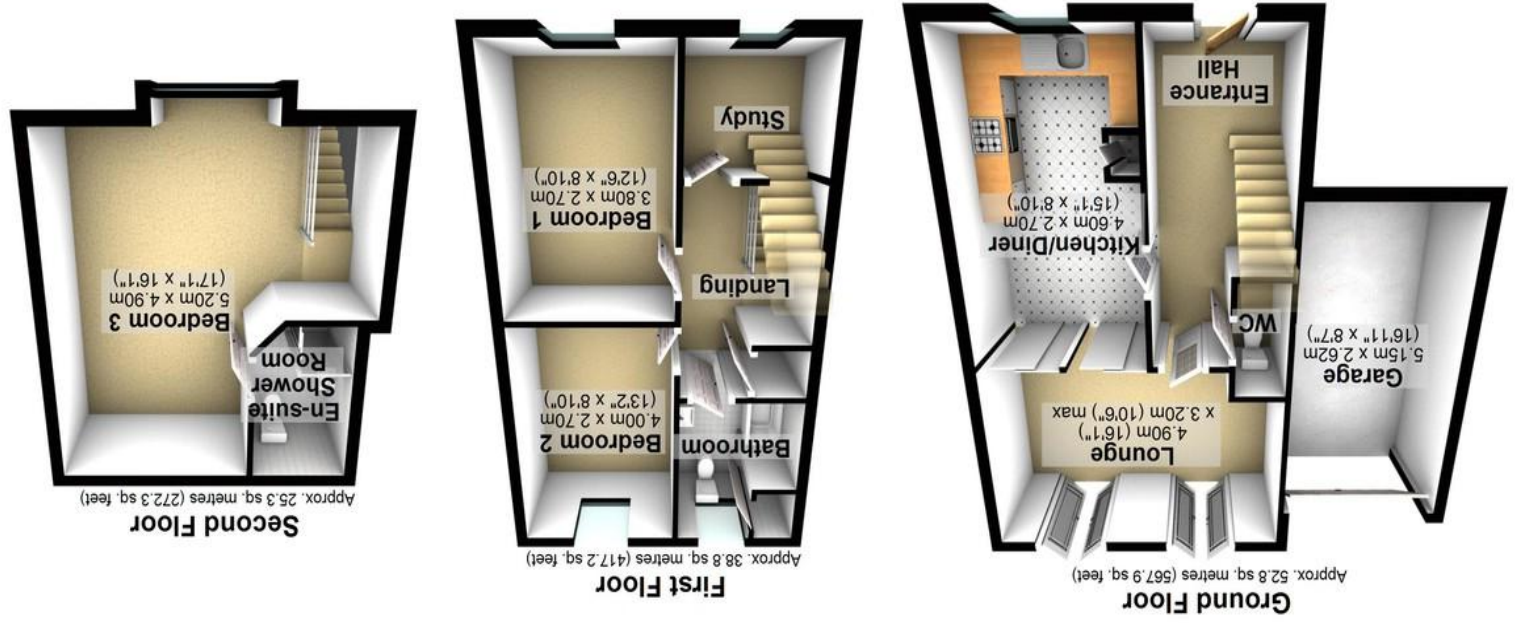
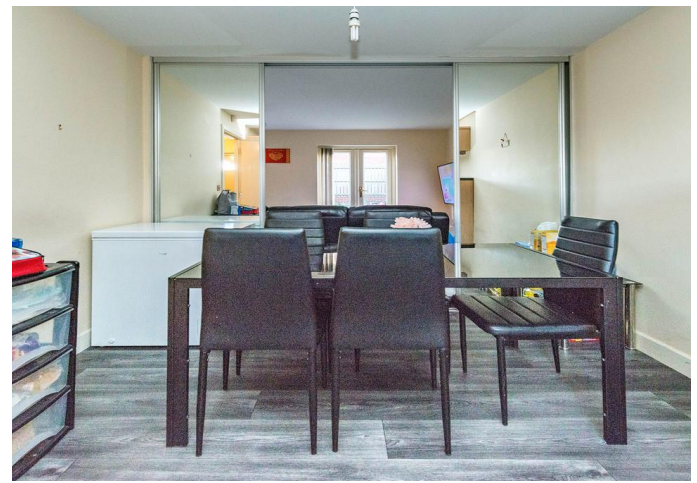


Agents Note: Whilst every care has been taken to prepare these particulars, they are for guidance purposes only. All measurements are approximate and whilst every care has been taken to ensure their accuracy, they should not be relied upon and potential buyers/tenants are advised to recheck the measurements.

Total area: approx. 116.8 sq. metres (1257.4 sq. feet)
All measurements are approximate
Plan produced using Planip.





12 Midhill Road | Heeley | Sheffield | S2 3GU

Property Tenure: Freehold

A super spacious three bedroomed end of run modern town house style property. Offered to the open market with the benefit of no onward chain and ideally placed on this quiet no through road in the very heart of Heeley within walking distance of central Sheffield, served by numerous local amenities and within catchment for well sought after schools. This well presented property benefits from off road parking to the front, garage together with lovely rear private gardens that must be viewed to be fully appreciated. With three great bedrooms and two bathrooms this superb property will appeal hugely to the young family and couple alike and offers very versatile accommodation spanning its three floors. In brief the accommodation comprises entrance hall, W.C, kitchen diner and rear sitting/family room, to the first floor are two great sized bedrooms and a bathroom whilst the master is on the top floor with en-suite



PROPERTY FEATURES

- THREE BEDROOMED TWO BATHROOMED END OF TERRACE
- REAR PRIVATE GARAGE WITH PARKING IN FRONT
- AVAILABLE WITH NO ONWARD CHAIN INVOLVED
- THREE SPACIOUS FLOORS OF ACCOMMODATION
- HEART OF ULTRA POPULAR HEELEY
- CLOSE TO AMENITIES AND WALKING DISTANCE TO CENTRAL SHEFFIELD
- SPACIOUS AND LIGHT ACCOMMODATION IN THE REGION OF 1,257 SQ FEET
- PERFECT FOR THE FAMILY OR FIRST TIME BUYER
- VIEWING ADVISED TO SEE THE SIZE ON OFFER
- FREEHOLD COUNCIL TAX BAND C

