

## 1b Darnley Road (One B Unit Eighteen), London, E9 6QH



**£2,300 Per month**

# 1b Darnley Road (One B Unit Eighteen), London, E9 6QH

\*\*\* TWO MONTHS FREE RENT FOR ALL NEW TENANTS \*\*\*

1B Darnley Road (E9) - Unit 18

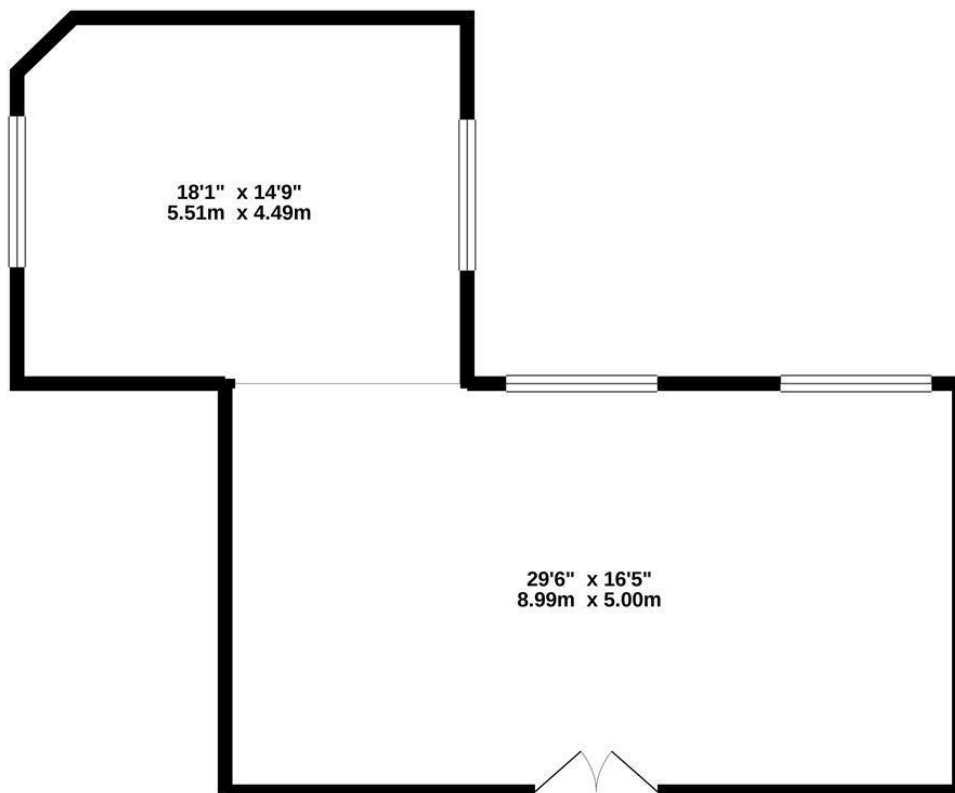
Rare opportunity for lease of commercial work units in two Victorian factory warehouses just off Mare Street in Hackney (E9). Multiple units available --- Various sizes

Full of character with tons of original rustic features. Excellent creative space for recording studios (some units are pre-fitted with recording and live rooms), photography studios, art workshops, art galleries, architect offices, gym and fitness studios, yoga studios etc. The building is adjacent to London Fields and close to Hackney Central station.

Rental - £2500 pcm  
Floor Size - 750 Sqft Approx  
Commercial Use Class - E/B3/B8  
EPC - Band C  
Business Rates - RV £16250

NB - Tenants are responsible for monthly rental payments, metered electric, commercial waste & business rates (If applicable).

UNIT 18 (1ST FLOOR)  
748 sq.ft. (69.5 sq.m.) approx.



STEPHEN HOUSE 1B DARNLEY ROAD LONDON E9 6QH (UNIT 18)

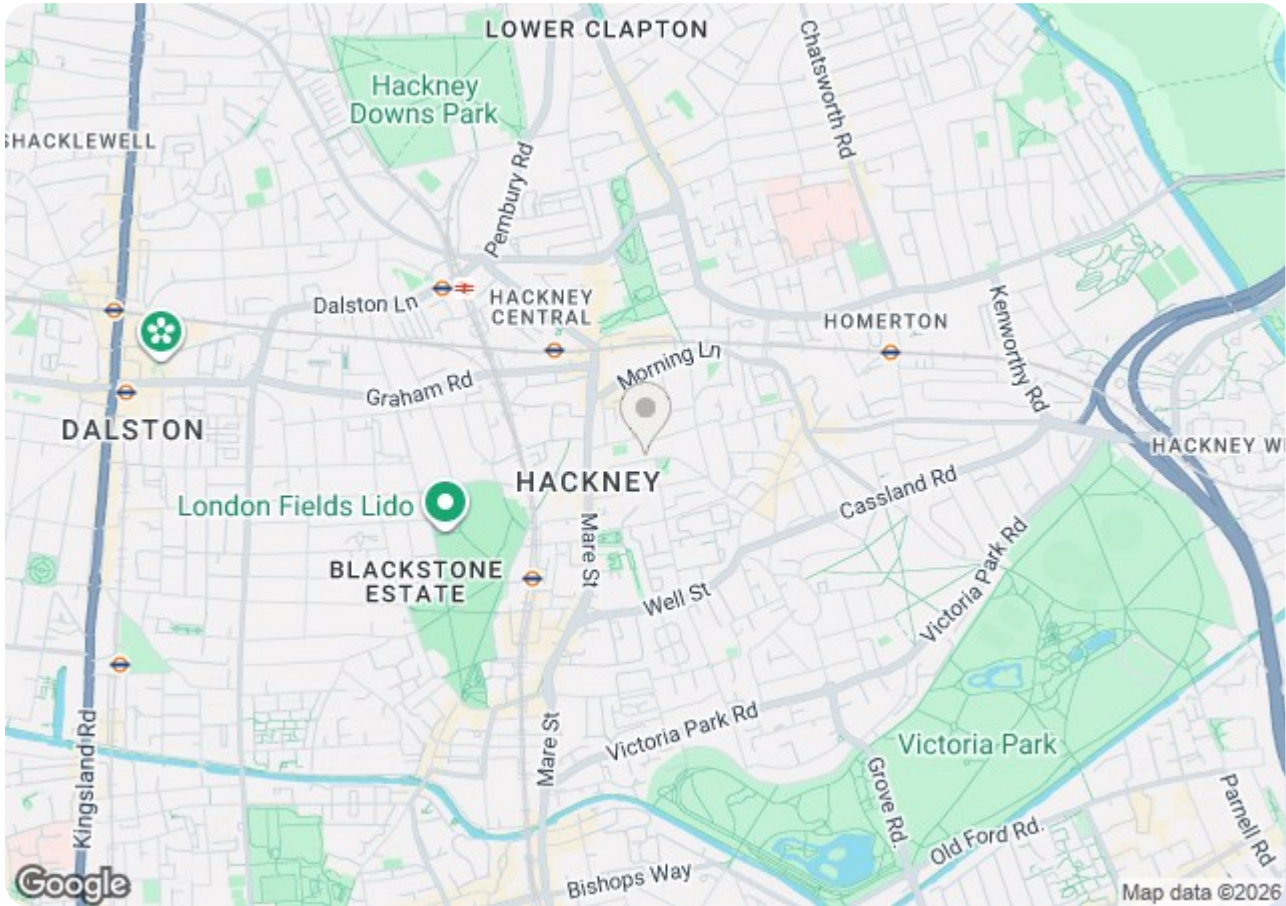
TOTAL FLOOR AREA: 748 sq.ft. (69.5 sq.m.) approx.

Whilst every attempt has been made to ensure the accuracy of the floorplan contained herein, measurements of doors, windows, rooms and any other items are approximate and no responsibility is taken for any error, omission or mis-statement. This plan is for illustrative purposes only and should be used as such by any prospective purchaser. The services, systems and appliances shown have not been tested and no guarantee as to their operability or efficiency can be given.

Made with Metropix ©2020



54/56 Barking Road  
 East Ham, London E6 3BP  
 Telephone: (020) 8472 4422  
 Property Management: (020) 8471 4224  
 Fax: (020) 8471 5052  
 E-mail: eastham@mcdowalls.com  
 Website: www.mcdowalls.com



| Energy Efficiency Rating                    |                         |           |
|---|-------------------------|-----------|
|   | Current                 | Potential |
| Very energy efficient - lower running costs |                         |           |
| (92 plus) <b>A</b>                          |                         |           |
| (81-91) <b>B</b>                            |                         |           |
| (69-80) <b>C</b>                            |                         |           |
| (55-68) <b>D</b>                            |                         |           |
| (39-54) <b>E</b>                            |                         |           |
| (21-38) <b>F</b>                            |                         |           |
| (1-20) <b>G</b>                             |                         |           |
| Not energy efficient - higher running costs |                         |           |
| <b>England &amp; Wales</b>                  | EU Directive 2002/91/EC |           |

| Environmental Impact (CO <sub>2</sub> ) Rating                  |                         |           |
|---|-------------------------|-----------|
|   | Current                 | Potential |
| Very environmentally friendly - lower CO <sub>2</sub> emissions |                         |           |
| (92 plus) <b>A</b>  |                         |           |
| (81-91) <b>B</b>  |                         |           |
| (69-80) <b>C</b>  |                         |           |
| (55-68) <b>D</b>  |                         |           |
| (39-54) <b>E</b>  |                         |           |
| (21-38) <b>F</b>  |                         |           |
| (1-20) <b>G</b>   |                         |           |
| Not environmentally friendly - higher CO <sub>2</sub> emissions |                         |           |
| <b>England &amp; Wales</b>                                      | EU Directive 2002/91/EC |           |

