



Woodstock Gardens, offers in the region of £400,000

- Detached 4 bedroom Family Home
- Corner Plot with Detached Garage and Driveway
- Beautiful landscaped Gardens
- Council Tax Band E
- Close to local transport links
- EPC Rating: D



 4  2  1



About the property

A beautifully presented four-bedroom detached family home, set back on a generous corner plot within the highly sought-after location of Woodstock Gardens, Pencoed, Bridgend. Surrounded by attractive woodlands and benefiting from a stunning garden, this exceptional property offers spacious and versatile accommodation, ideal for a growing family.

The accommodation comprises a welcoming entrance hall, a large, bright and airy lounge which flows through to a separate dining room, and a modern, well-appointed kitchen. Further enhancing the living space is a conservatory accessed from the kitchen, enjoying delightful views over the beautifully maintained rear garden, along with the additional benefit of a convenient downstairs WC.

To the first floor are four well-proportioned bedrooms, all served by a contemporary family shower room finished to a high standard.

Externally, the property sits within a generous plot and benefits from a driveway providing off-road parking for several vehicles, along with a detached garage. The attractive gardens and woodland backdrop create a peaceful and private setting. Ideally located close to local shops, schools, amenities, transport links and the M4 motorway, this stunning home offers both convenience and tranquillity. Viewing is highly recommended to fully appreciate everything this superb family property has to offer. kitchen, conservatory, driveway and garage.





Accommodation

Entrance Hall

Lounge

15' 9" x 12' 6" (4.80m x 3.81m)

Diner

11' 2" x 9' 10" (3.40m x 3.00m)

Kitchen

11' 2" x 9' 10" (3.40m x 3.00m)

Conservatory

10' 6" x 8' 2" (3.20m x 2.49m)

W.C.

First Floor

Landing

Bedroom One

14' 1" x 10' 2" (4.29m x 3.10m)

Bedroom Two

11' 2" x 10' 2" (3.40m x 3.10m)

Bedroom Three

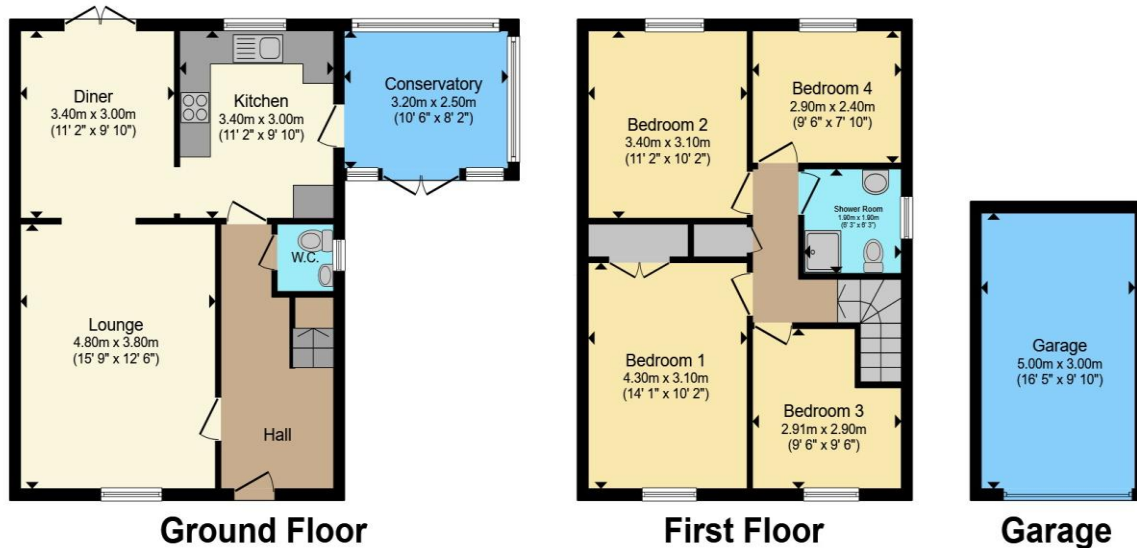
9' 6" max x 9' 6" max (2.90m max x 2.90m max)

Shower Room

Garage

16' 5" x 9' 10" (5.00m x 3.00m)

Floorplan



Total floor area 124.7 m² (1,343 sq.ft.) approx

This floor plan is for illustrative purposes only. It is not drawn to scale. Any measurements, floor areas (including any total floor area), openings and orientation are approximate. No details are guaranteed, they cannot be relied upon for any purpose and they do not form part of any agreement. No liability is taken for any error, omission or misstatement. A party must rely upon its own inspection(s). Powered by www.propertybox.io

Important Information

Note while we endeavour to make our sales details accurate and reliable, if there is any point which is of particular interest to you, please contact the office and we will be pleased to confirm the position for you. We have not personally tested any apparatus, equipment, fixtures, fittings or services and cannot verify they are in working order or fit for their purposes. Nothing in these particulars is intended to indicate that carpets or curtains, furnishings or fittings, electrical goods (whether wired or not). Gas fires or light fittings or any other fixtures not expressly included form part of the property offered for sale. This computer generated Floorplan, if applicable, is intended as a general guide to the layout and design of the property. It is not to scale and should not be relied upon for dimensions. Tenure: We cannot confirm the tenure of the property as we have not had access to the legal documents. The buyer is advised to obtain verification from their solicitor or surveyor.