



West of **EXE**

Higher Marsh Row
Exminster £685,000

Higher Marsh Row

Exminster £685,000

This charming four-bedroom semi-detached cottage, built from local red sandstone in the late 18th century, blends period character with modern living. Thoughtfully extended and refurbished, it offers both style and comfort throughout. The heart of the home is a bright open-plan kitchen and living area, with bi-fold doors opening onto a patio—perfect for relaxing or entertaining while enjoying views across the marshes and estuary. Upstairs, a striking loft conversion creates a peaceful top-floor bedroom with French doors and a glass balustrade, framing far-reaching countryside views. Further features include wooden flooring to the ground floor, ample storage and parking, and energy-efficient additions such as an air source heat pump and underfloor heating.

Semi Detached | 4 Bedrooms | Open Plan Kitchen Lounge | Family Room | Dining Room | Family Bathroom | Cloakroom | Double Garage with Studio Above | Air Source Heat Pump | Completely Refurbished

LOCATION

Situated a short distance from the picturesque village of Exminster, 1 Higher Marsh Row enjoys a prime location just a 5-minute drive from the village centre and is within easy access to local amenities and services. For those who enjoy outdoor activities, the area is perfect for walking and exploring the beautiful Exminster Marshes and the surrounding countryside. The property is well-connected, with easy access to the vibrant city of Exeter, local beaches, and Dartmoor.

DESCRIPTION

Inside is a harmonious blend of historic charm and contemporary luxury. The ground floor welcomes you with a light and airy entrance lobby with connecting useful cloakroom/shower room – both with high ceilings. The family room is a true heart of the home, exuding warmth and character with its impressive inglenook fireplace, brick arched mantle, and solid fuel stove. Moving through, the central dining room, which features a set of elegant French doors leading to the family room, you will find a seamless transition between spaces that enhances the flow and functionality of the home. At the rear of the property lies the open-plan kitchen lounge—a modern masterpiece designed for both style and convenience. The kitchen is fitted with contemporary shaker-style in-frame doors, sleek granite worktops, and a solid wood-topped central island that doubles as a breakfast bar. Overhead roof light windows flood the space with natural light, creating an airy and uplifting environment. experience.



Ascending to the first floor, you will discover three well-proportioned bedrooms, each thoughtfully designed to provide comfort and tranquillity. The first-floor bathroom is a blend of classic and contemporary, featuring grey wood-panelled walls, white metro tiles, and a Victorian suite with a shower over the bath. The crowning jewel of the property is the second-floor bedroom, an exceptional space that offers a private retreat with unparalleled views. This fabulous top-floor bedroom is enhanced by French doors that open to reveal a glass balustrade, providing commanding panoramic vistas of the surrounding Exminster countryside.

Throughout the home, the blend of original period features and high-quality modern finishes create a living environment that is both aesthetically pleasing and functionally superior. Whether it's the wooden floors that flow across the ground floor or the carefully chosen fixtures and fittings, every detail of 1 Higher Marsh Row has been thoughtfully curated.

The property also benefits from the central heating and hot water being provided by a highly efficient Air Source Heat Pump enhancing the home's eco-friendly credentials, with underfloor heating throughout and digital thermostatic controls in every room.

GARDEN AND GROUNDS

The exterior is equally enchanting, with gravelled parking at the front providing ample space for multiple vehicles.

A double garage with remote controlled electric roller doors and an overhead studio/hobby room offers additional storage and workspace.

The rear garden, laid to lawn and bordered by a laurel hedge, provides a safe and spacious area for outdoor activities. The patio, extending across the front of the new extension and featuring glass balustrades, allows for uninterrupted views of the beautiful open countryside.

AGENTS NOTES:

Tenure: Freehold

Council Tax Band: C

Council: Teignbridge District Council

Parking: large driveway area with ample parking and double garage

Garden: Enclosed garden to rear

Electricity: Mains

Gas: Mains

Heating: Gas central heating

Water: Mains

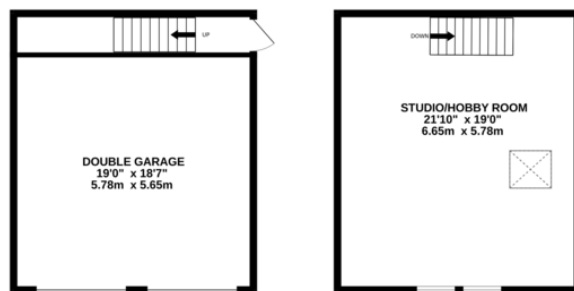
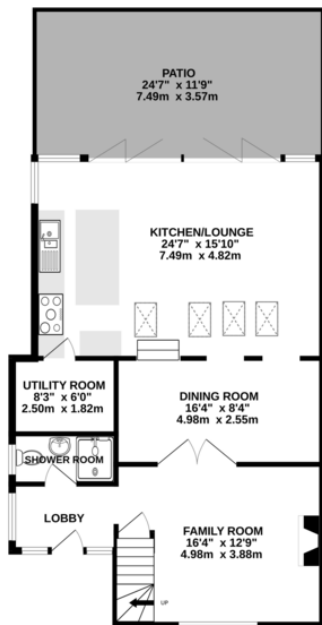
Sewerage: Septic Tank

Broadband: Standard - Highest available download speed is 2 Mbps and the Highest available upload speed is 0.3 Mbps. Faster speeds are available at additional cost.

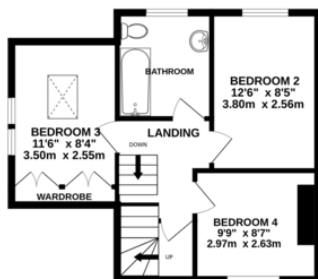
Mobile coverage: Various mobile networks are available in this area



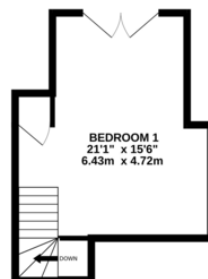
GROUND FLOOR
824 sq.ft. (76.5 sq.m.) approx.



1ST FLOOR
437 sq.ft. (40.0 sq.m.) approx.



2ND FLOOR
260 sq.ft. (24.2 sq.m.) approx.



TOTAL FLOOR AREA : 1521 sq.ft. (141.3 sq.m.) approx.
Measurements are approximate. Not to scale. Illustrative purposes only
Made with Metropix ©2024



Score	Energy rating	Current	Potential
92+	A		
81-91	B		
69-80	C		80 C
55-68	D	67 D	
39-54	E		
21-38	F		
1-20	G		

Agents Note: Whilst every care has been taken to prepare these sales particulars, they are for guidance purposes only. All measurements are approximate and are for general guidance purposes only and whilst every care has been taken to ensure their accuracy, they should not be relied upon and potential buyers are advised to recheck the measurements. West of Exe is a trading name for East of Exe Ltd. Reg. no. 07121967



EXETER OFFICE
18 Southernhay West Exeter EX1 1PJ
Tel: 01392 833999
enquiries@eastofexe.co.uk
www.eastofexe.co.uk

EAST DEVON OFFICE
61 Fore Street Topsham Exeter EX3 0HL
Tel: 01392 345070
enquiries@eastofexe.co.uk
www.eastofexe.co.uk

WEST OF EXE OFFICE
Main Road Exminster EX6 8DB
Tel: 01392 833999
enquiries@westofexe.co.uk
www.westofexe.co.uk

Registered in England no. 07121967