
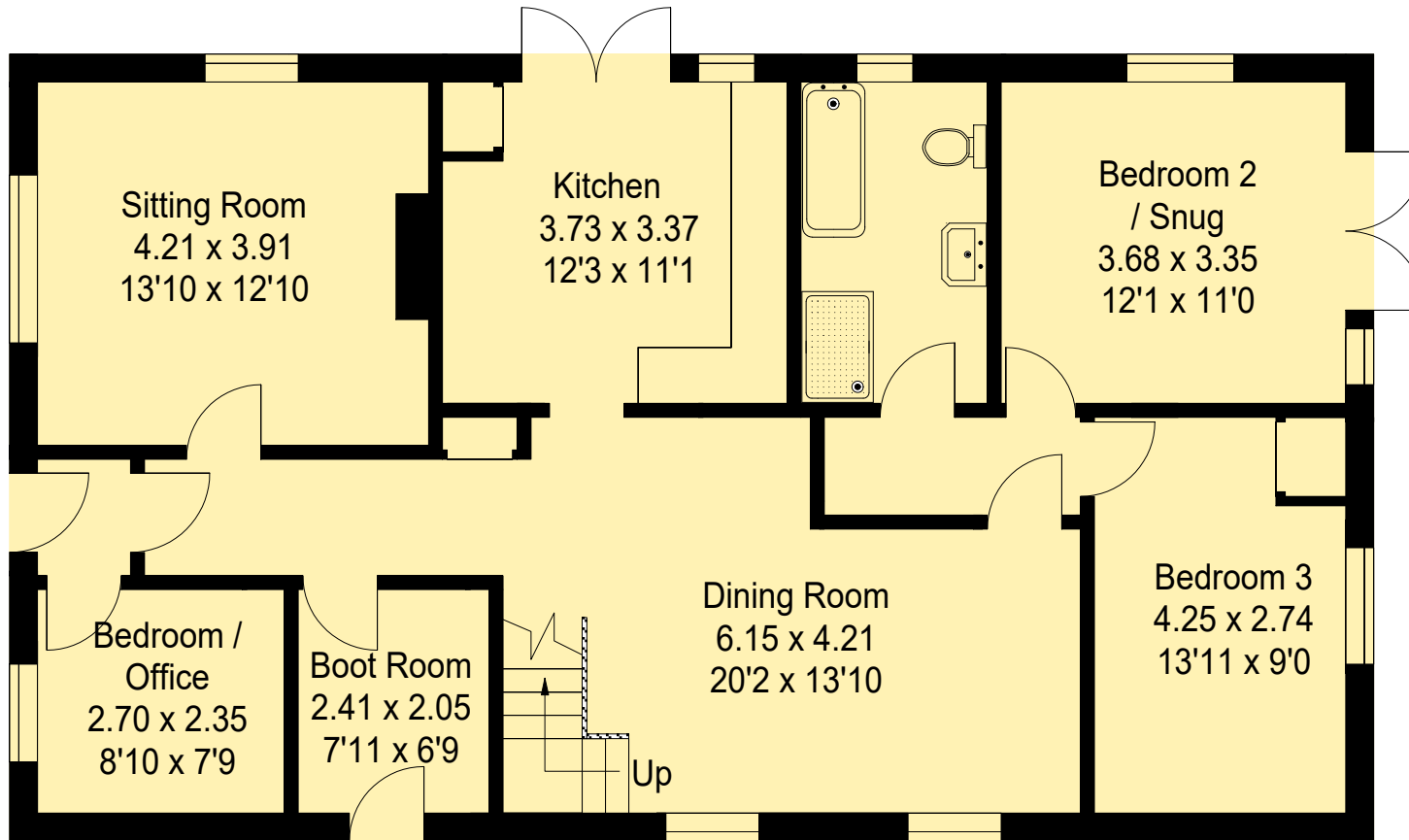
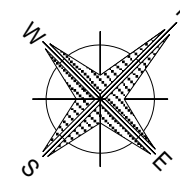


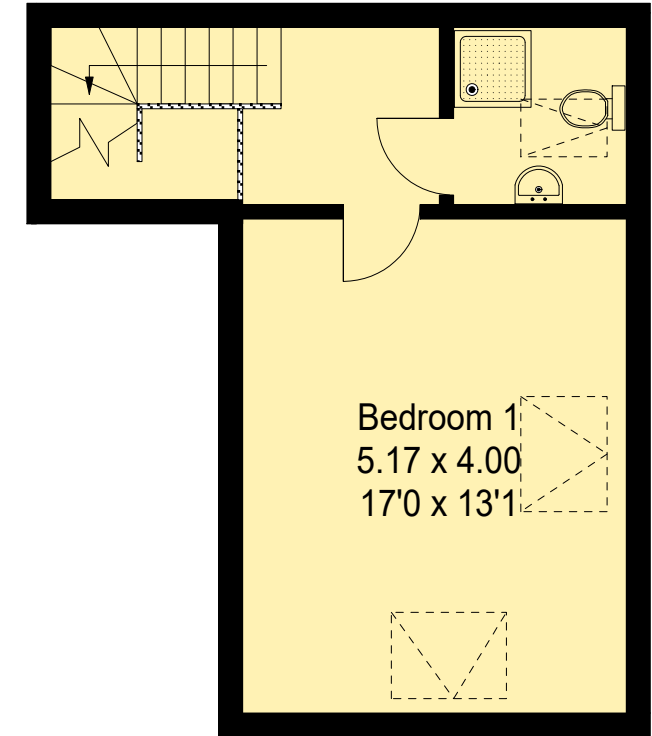
# 201 East Gomeldon Road, Gomeldon, Salisbury SP4 6NA

Approximate Gross Internal Area :- 143 sq m / 1534 sq ft

 = Reduced headroom below 1.5 m / 5'0



## Ground Floor



## First Floor

PRODUCED FOR FOX GRANT 2026

This illustration is for identification purposes only.  
Not drawn to scale, unless stated.