



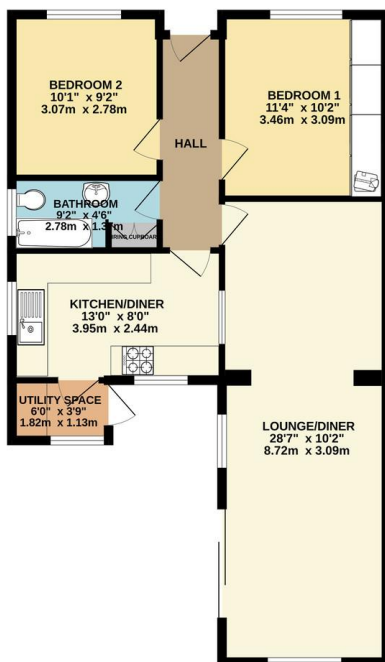
## FOR SALE

2 Bed Detached Bungalow in Willow Park Drive, Wigston, LE18 1ED  
Offers Over £220,000

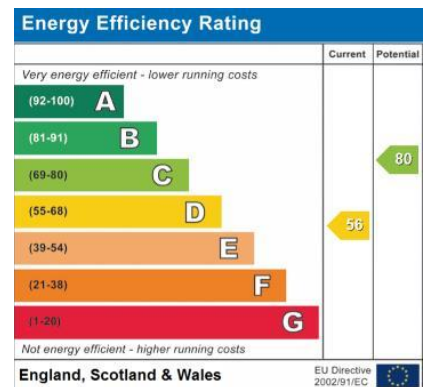
A unique opportunity to acquire this individually built two bedroom detached bungalow, offered to the market with no upward chain. Situated on a highly sought-after street in Wigston, the property boasts a substantial extended rear reception room, generous plot with landscaped gardens, and a detached garage to the rear. Requiring full modernisation throughout, this home offers fantastic potential for improvement and personalisation, making it ideal for buyers looking to create a bespoke living space.



GROUND FLOOR  
713 sq.ft. (66.2 sq.m.) approx.



TOTAL FLOOR AREA: 713 sq.ft. (66.2 sq.m.) approx.  
Whilst every attempt has been made to ensure the accuracy of the floorplan contained herein, measurements of doors, windows, rooms and any other items are approximate and no responsibility is taken for any error, omission or mis-statement. This plan is for illustrative purposes only and should be used as such by any prospective purchaser. The services, systems and appliances shown have not been tested and no guarantee as to their operability or efficiency can be given.  
Made with Metaphor CADD



- Two Bedroom Detached Bungalow
- Individually Built By Previous Owner
- Offered With No Upward Chain
- Requiring Full Modernisation Throughout
- Fantastic Scope For Improvement
- Extended Rear Reception Room
- Generous Plot With Landscaped Gardens

**Agents Note:** Whilst every care has been taken to prepare these sales particulars, they are for guidance purposes only. All measurements are approximate are for general guidance purposes only and whilst every care has been taken to ensure their accuracy, they should not be relied upon and potential buyers are advised to recheck the measurements.

