



# BROADFIELD WALK

## BIRMINGHAM, B16 8AN

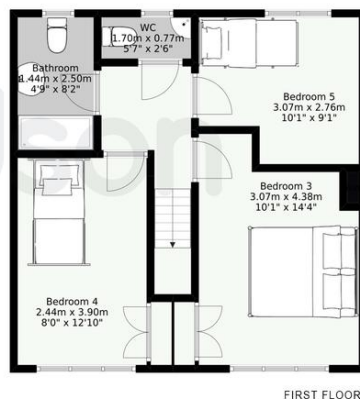
£395,000  
FREEHOLD

Ultra-Rare Freehold HMO | Heart of Birmingham City Centre | 5 Bedrooms |  
£35,640 Per Annum Income | 9.02% Gross Yield | Fully Let | Investment  
Opportunity

# Davidson



APPROXIMATE GROSS INTERNAL AREA: 1139.9 SQ.F / 105.9 SQ.M  
Ground floor: 683.7 SQ.F / 63.5 SQ.M  
First floor: 456.0 SQ.F / 42.4 SQ.M



Floorplan measurements are for illustrative purpose only. Floor plan by [www.sebastiano.co.uk](http://www.sebastiano.co.uk).

# Davidson

OFFICE

22 Harborne Road

Birmingham

West Midlands

B15 3AA

0121 455 7727

[info@davidsonstates.co.uk](mailto:info@davidsonstates.co.uk)

[www.davidsonstates.co.uk](http://www.davidsonstates.co.uk)

Agents Note: Whilst every care has been taken to prepare these particulars, they are for guidance purposes only. All measurements are approximate and are for general guidance purposes only and whilst every care has been taken to ensure their accuracy, they should not be relied upon and potential buyers/tenants are advised to recheck the measurements