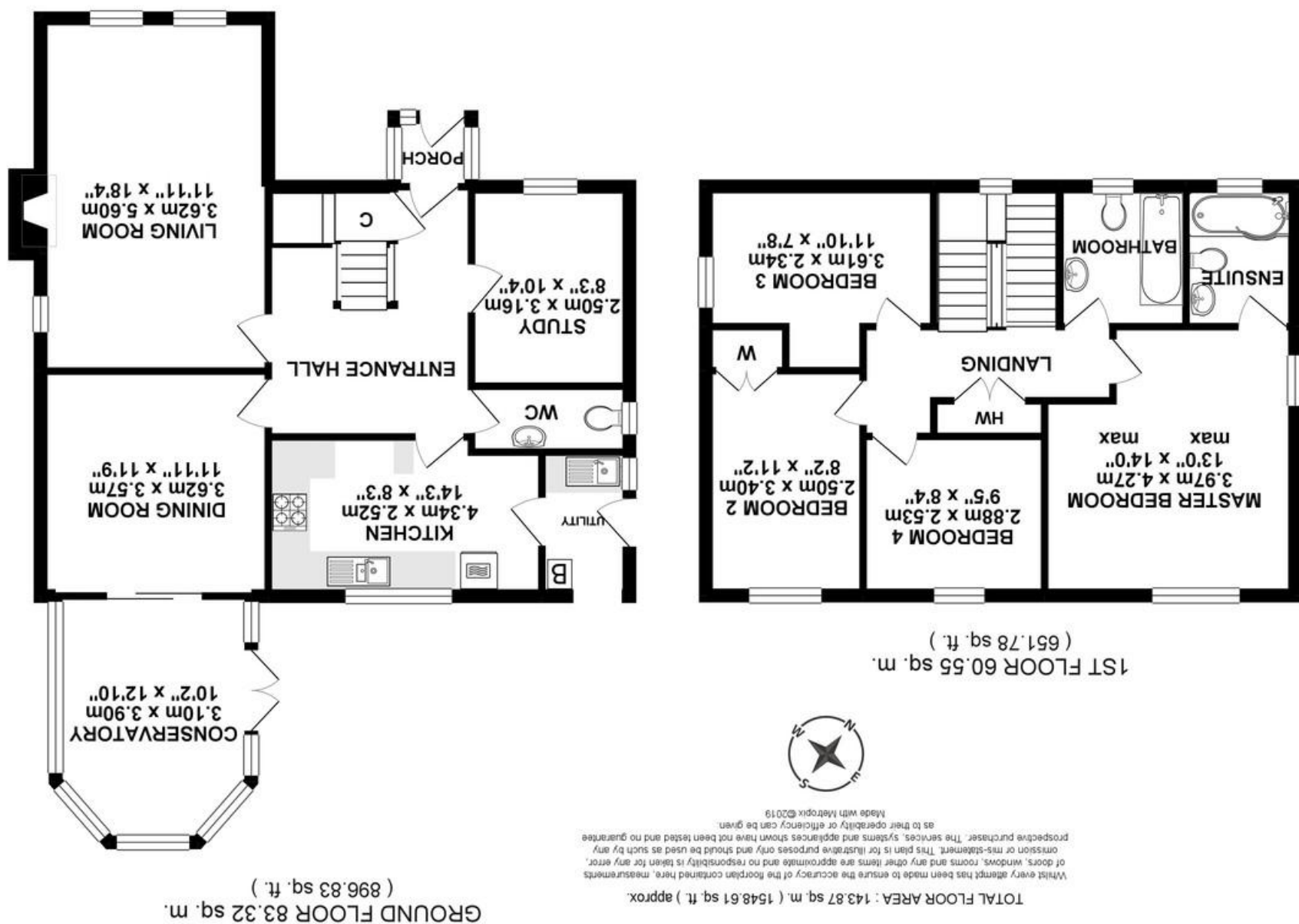


Agents Note: Whilst every care has been taken to prepare these sales particulars, they are for guidance purposes only. All measurements are approximate and for general guidance purposes only and whilst every care has been taken to ensure their accuracy, they should not be relied upon and potential buyers are advised to check the measurements themselves.



3 Woodlands, Pickwick, Corsham, Wiltshire, SN13 0DA



3 Woodlands, Pickwick, Corsham, Wiltshire, SN13 0DA

- Four bedroom detached house
- Good sized conservatory
- 'Everest' UPVC double glazing
- Wonderful gardens
- Two reception rooms plus study
- Bathroom and en suite
- Double garage large driveway
- Sought after location

OIEO - £575,000

Situation and Description

An attractive detached family house occupying a generous plot on a small, sought after development close to countryside. The property offers an excellent level of accommodation comprising entrance porch, spacious hall with cloakroom off, sitting room, dining room, superb conservatory opening onto the rear garden, kitchen with modern units, utility room, study, master bedroom with en suite bathroom, three further bedrooms and a family bathroom with white suite.

Outside

Front

Good sized lawned garden with paved path to front door.

Rear

One of the outstanding features of the property is the large mature rear garden which is meticulously maintained and well enclosed by manicured hedging and fencing. The garden is predominately lawned and is well stocked with mature trees, ornamental bushes and pretty flower and shrub beds. There are private and pleasantly secluded paved patio seating areas either side of the conservatory which are connected by a path. Greenhouse and outside tap. Side access with gate leading to the front of the property.

Garage

Detached double unit with two sets of double doors to front, door to garden, power and lighting. Ample driveway parking in front for numerous vehicles.

The property enjoys a very peaceful and private position in Woodlands, which is a highly desirable, exclusive residential development within walking distance of Corsham's picturesque and historic high street which offers a variety of interesting shops, cafes and restaurants. Other local amenities include junior and comprehensive schooling, doctors surgery and leisure centre. Ideally placed for access to the A4, the Georgian city of Bath is within 9 miles with its vast array of shopping, cultural and leisure amenities and high speed rail service to London, which is also available at nearby Chippenham. There is also fast road access to the M4 motorway via junction 17.

EPC Rating - D



Directions

From our office on the High Street turn right onto Pickwick Road. Turn right at the mini roundabout onto Newlands Road, proceed straight over the first mini roundabout and at the second mini roundabout turn left onto Priory Street. At the end of Priory Street turn left onto the A4 and then almost immediately right into Woodlands. Take the first left turning where the property can be found on the left hand side.