

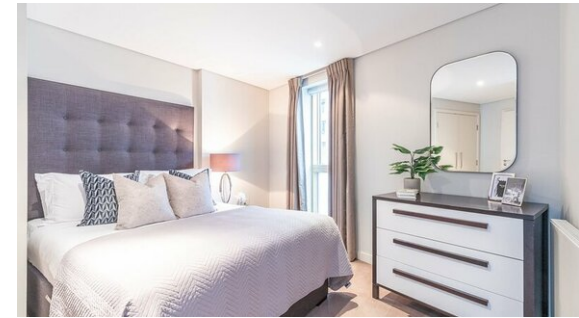


Q Investments
International



3 Bedroom Apartment / Flat
Paddington

£6,716.67 per month
<https://qinvestments.london>



London, Paddington

Interior designed 3 Bedroom Apartment In Merchant Square, Paddington, Central London.

Size: 1018 square feet (94.57 sqm)

This high floor, three bedroom, two bathroom, interior designed apartment is set within the heart of the Paddington Basin and close to the popular West End Quay. The building moreover features a concierge and lift service. Located in the heart of Paddington, Flat is a stylish and recently refurbished three-bedroom apartment with stunning views across the London skyline. This clean and pet-friendly apartment benefits from modern interiors and has been fitted with high-end furnishings and appliances throughout.

All three bedrooms offer suitable storage space, with the largest bedroom offering a sleek en-suite bathroom. The second bathroom is also elegant and highly presentable. Residents can enjoy the spacious open-plan kitchen and living area, with far-reaching views across the London rooftops. The large sofa is perfect for relaxing and watching TV, whilst the modern four-seater dining table is ideal for sharing lovely meals with family and friends. The apartment furthermore benefits from Wi-Fi, and there are laptop friendly surfaces for home working.

The apartment is located in the vibrant and exclusive waterside building of Merchant Square, in the newly developed Paddington Basin. This contemporary block comprises 60 luxury 1,2,3, and 4-bedroom apartments set over 15 storeys. Many of the apartments boast beautiful canal views, as well views across the London skyline. The building also benefits from concierge service, 24/7 security and stunning landscaped spaces in its outdoor garden square. All the apartments have comfort cooling.

