



Owens Close, Long Stratton, Norwich, NR15 2TX

Offers in excess of £225,000



01508 531331

www.whittleyparish.com

Property Features

- Detached garage
- Walking distance to amenities
- Corner plot position
- Replaced bathroom
- x4 bedrooms
- South westerly gardens
- Council Tax Band B
- Freehold
- Energy Efficiency Rating E.

Full Description

Conveniently positioned close to the local schools and public transport, Owens Close is found within walking distance of the centre of the town. Day to day amenities include doctors surgery, dentists, veterinary surgery, cafes and restaurants, library, supermarket and shops. This attractive village is situated within the beautiful countryside of mid-Norfolk lying ten miles to the south of Norwich and some twelve miles to the north of Diss further having the benefit of a mainline railway station with services to London Liverpool Street.

The property comprises of a four bedroom detached bungalow built of traditional brick and block construction under an interlocking tiled roof with the benefit of UPVC double glazed windows whilst being heated by an oil fired central heated boiler via radiators. The property is in need of an update and modernisation throughout with the exception of the bathroom which has been replaced in recent years.

Externally the property enjoys a corner plot position with the benefit of a detached single garage adjacent to the property with internal door to rear gardens. These enjoy a south westerly facing aspect being predominantly laid to lawn with plants and shrubs giving plenty of colour in the summer months whilst being enclosed by brick walling, concrete post and panel fencing.



ENTRANCE HALL

Giving access to the reception room, four bedrooms and a family bathroom and further door to the airing cupboard housing the hot water cylinder.

RECEPTION ROOM

Bright and spacious living area with space for dining table and chairs, French doors looking out and giving access to south westerly facing rear gardens and further door to the kitchen.



KITCHEN

With front aspect window, built-in electric oven, four ring hob with extractor fan over, a range of wall and base units, sink unit and drainer and mixer tap, door giving access to the utility room.



BEDROOM ONE

A spacious double bedroom with side aspect window.

BEDROOM TWO

Another good sized double bedroom.

BEDROOM THREE

A large single bedroom with side aspect window.

BEDROOM FOUR

Fourth bedroom offering itself as potential space for study/home office.



BATHROOM

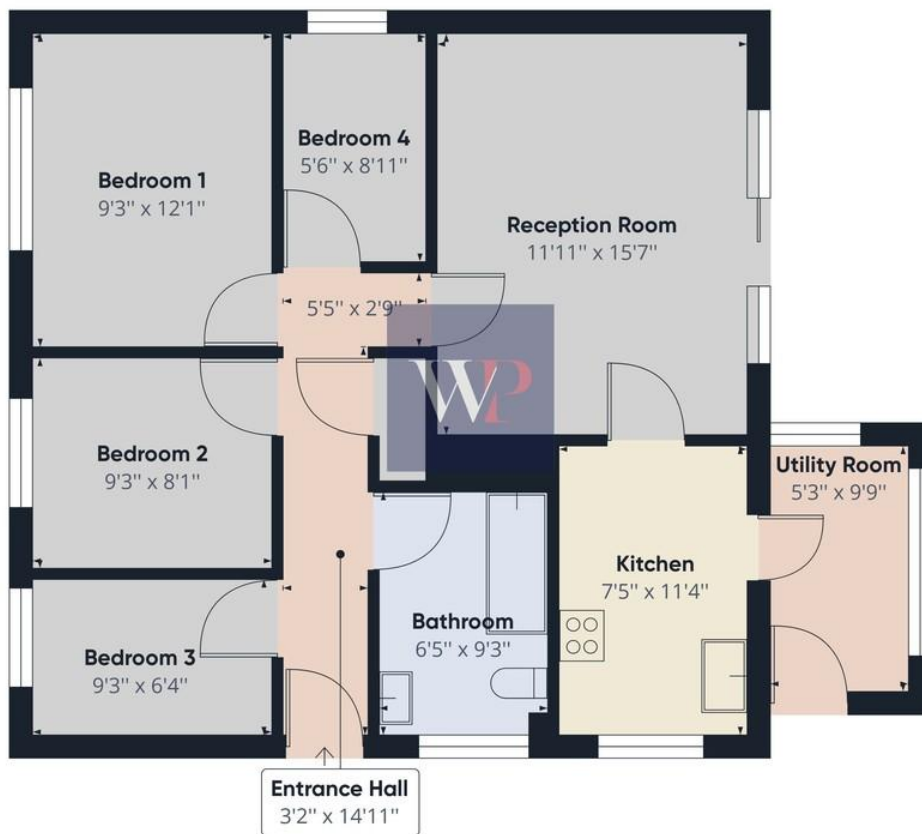
With window to front. Replaced bathroom with panelled bath, overhead shower component and screen, low level WC, hand wash basin with storage until underneath, tiled splashbacks.

UTILITY ROOM

Found to the side of the property and giving access to the rear gardens.



OUR REF: LO965



Approximate total area⁽¹⁾
769.02 ft²

(1) Excluding balconies and terraces

While every attempt has been made to ensure accuracy, all measurements are approximate, not to scale. This floor plan is for illustrative purposes only.

GIRAFFE360

Beatrix Potter Cottage
The Street
Long Stratton
Norwich
NR15 2XJ

www.whitleyparish.com
longstratton@whitleyparish.com
01508 531331

Agents Note: Whilst every care has been taken to prepare these sales particulars, they are for guidance purposes only. All measurements are approximate and for general guidance purposes only and whilst every care has been taken to ensure their accuracy, they should not be relied upon and potential buyers are advised to recheck the measurements