



MILE



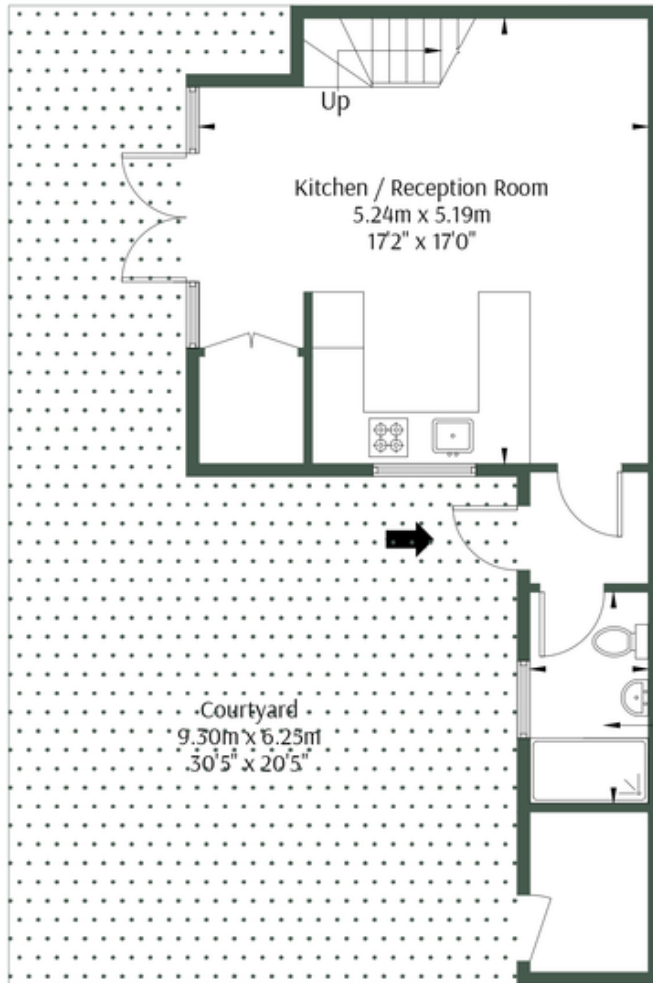
Wrotesley Road, London NW10 £450,000 Leasehold

Welcome to Wrotesley Road, where charm meets convenience in this one-of-a-kind coach house awaiting its new owner. Nestled in a picturesque setting, this property boasts a bright double bedroom on the top floor, offering a serene escape from the bustle of everyday life. Your own entrance ensures privacy and autonomy, while a communal garden provides the perfect spot for relaxation and outdoor gatherings. Additionally, a private courtyard exclusive to the coach house adds to the appeal of this unique residence. Inside, an open plan kitchen living area awaits, offering flexibility and space for both entertaining and daily living. Sold chain-free, this property presents an excellent opportunity for those seeking a hassle-free transition. Conveniently located, this coach house is situated in a fantastic area with amenities and transport links within easy reach. While it would benefit from some modernization, the potential is endless, making it an ideal canvas for your personal touch. With a long lease in place and the potential to acquire a share of the freehold at a later date, this property offers not only a comfortable home but also a promising investment opportunity. Don't miss your chance to make this coach house your own and embrace the unique lifestyle it offers.

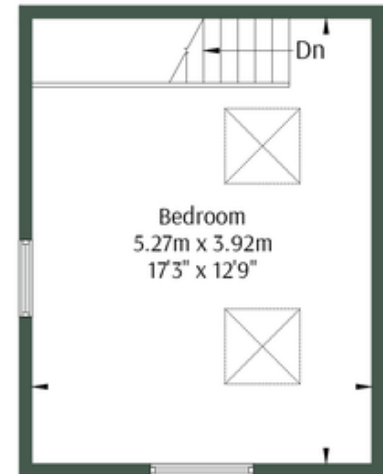
- Detached
- Coach house
- One bedroom
- Unique property
- Chain free
- Long lease
- Courtyard
- Split level
- Great location
- Close to shops and transport

Coach House, Wrotesley Road, NW10 5TY

Approx Gross Internal Area = 54.95 sq.m / 591 sq.ft



Ground Floor



First Floor



The Floor plan is not to scale and measurements and areas shown are approximate and therefore should be used for

MONEY LAUNDERING REGULATIONS 2003: Intending purchasers will be asked to produce identification documentation at a later stage and we would ask for your co-operation in order that there will be no delay in agreeing the sale.

General: While we endeavour to make our sales particulars fair, accurate and reliable, they are only a general guide to the property and, accordingly, if there is any point which is of particular importance to you, please contact the office and we will be pleased to check the position for you, especially if you are contemplating travelling some distance to view the property.

Measurements: These approximate room sizes are only intended as general guidance. You must verify the dimensions carefully before ordering carpets or any built-in furniture.

Services: Please note we have not tested the services or any of the equipment or appliances in this property, accordingly we strongly advise prospective buyers to commission their own survey or service reports before finalising their offer to purchase.