



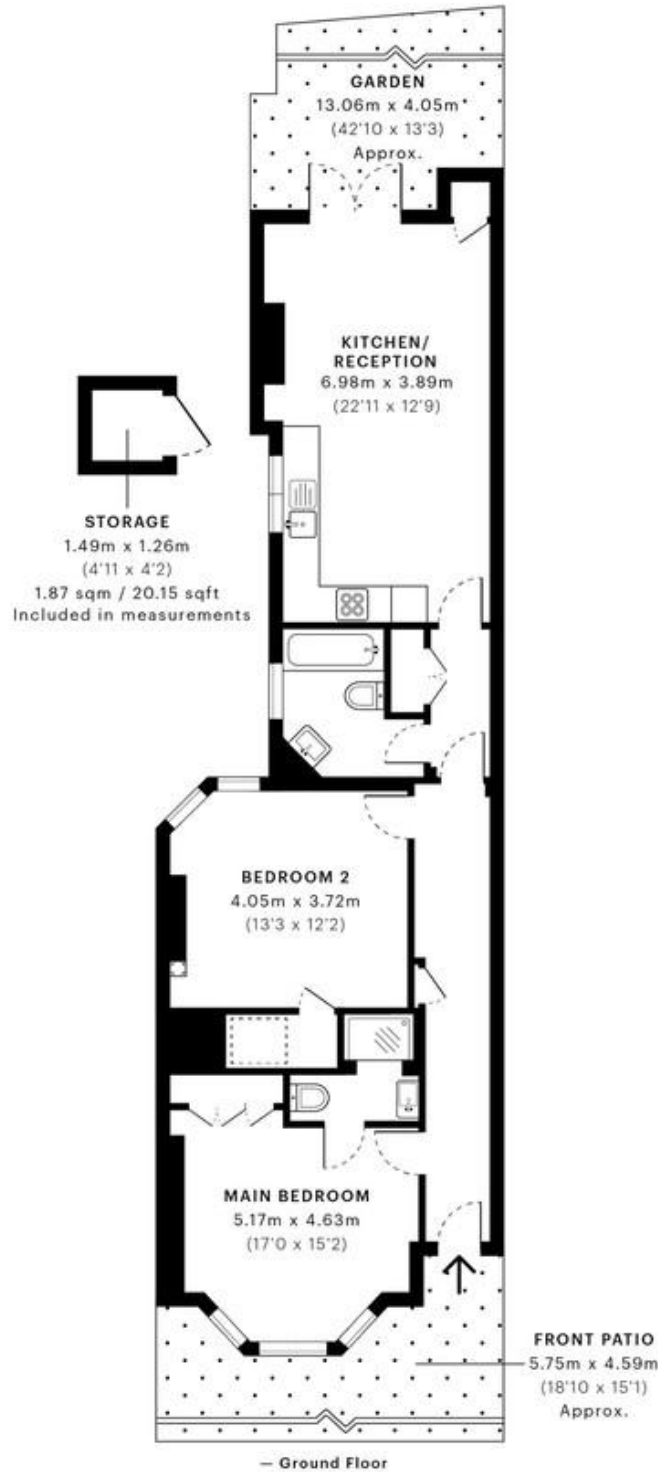
MILE



Ridley Road, London NW10 £625,000 Share of Freehold

Welcome to Ridley Road. This stunning flat offers an exceptional living experience with its unique features and spacious layout. As a share of freehold property, you gain the added advantage of owning a portion of the building itself. This end-of-terrace flat boasts its own private entrance and is chain-free, ensuring a seamless and swift purchase process. Being an end-of-terrace property, it benefits from a significantly larger square footage compared to neighbouring flats, offering an impressive 911 square feet of living space. This home comprises two generously sized bedrooms, perfect for comfort and relaxation. The master bedroom features an en-suite bathroom, providing a private retreat within your home. The heart of this property is the expansive 22-foot open-plan kitchen and living area, designed to accommodate both dining and lounging spaces effortlessly. This area opens directly onto a private garden, creating a perfect blend of indoor and outdoor living and ideal for entertaining or enjoying quiet moments. Presented in good condition, this flat is ready for you to move in and make it your own. Don't miss the opportunity to own this remarkable home on Ridley Road, where space, privacy, and convenience converge to create an unparalleled living experience.

- Ground floor apartment
- Garden
- Two bedrooms
- Two bathrooms
- Own entrance
- Chain free
- Share of Freehold
- Great location
- Quiet residential road
- Close to transport



GROSS INTERNAL AREA (GIA)
The footprint of the property
84.68 sqm / 911.49 sqft

NET INTERNAL AREA (NIA)
Excludes walls and external features
Includes washrooms, restricted head height
77.27 sqm / 831.73 sqft

EXTERNAL STRUCTURAL FEATURES
Balconies, terraces, verandas etc.
0.00 sqm / 0.00 sqft

RESTRICTED HEAD HEIGHT
Limited use area under 1.5 m
0.94 sqm / 10.12 sqft