



HINTON & DOWNES
residential

SALES, LETTINGS & MANAGEMENT

Kenton Lane

Harrow Weald HA3 6AD

- Five bedroom semi detached house
- Favoured location on the Harrow Weald/Stanmore borders
- Sizable accommodation for a large family
- Off street parking to the front

Asking Price Of **£850,000**

EPC Rating '48'





Property Description

The accommodation with approximate room sizes is arranged as follows:

Ground Floor:-

Entrance Hall

Front Reception 15'8 x 12'4. (4.78m x 3.76m).

Rear Reception 14'11 x 13'6. (4.55m x 4.12m).

Dining Room 19'6 x 9'. (5.94m x 2.74m).

Kitchen 12' x 11'2. (3.66m x 3.40m).

Landing Inner hall

Bedroom I Rear Bedroom Suite, comprising three sections measuring 13'10 x 9'6 (4.22m x 2.90m), 18'9 x 11' (5.72m x 3.35m) and 5'8 x 4'2 (1.73m x 1.27m). The layout here would make a fantastic master bedroom with dressing room and possible en-suite bathroom.



Bedroom II 16'1 x 10'10. (4.90m x 3.30m).

Bedroom III 10'10 x 9' (3.30m x 2.74m).

Bedroom IV 8' x 8'. (2.44m x 2.44m)

Bathroom

Bedroom V 24'7 x 16'. (7.49m x 4.88m)

En-Suite Bathroom

General Information



Front Garden Off street parking.

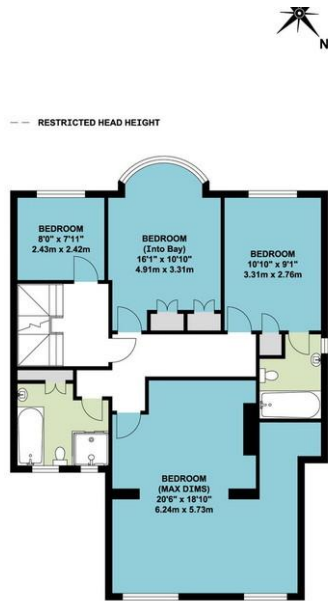
Rear Garden Approximately 90ft (27.4m). Block patio area / veranda leading to area of lawn with mature borders.

Garage Open garage to the side with up and over door. Direct access through to the rear garden.





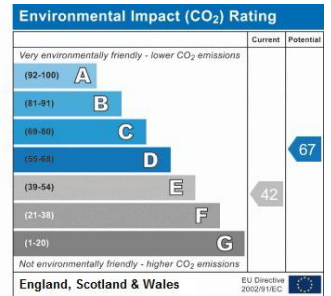
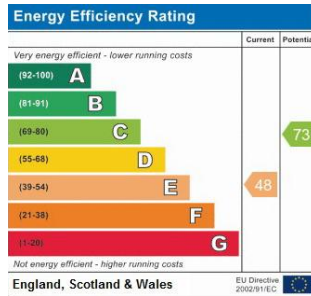
GROUND FLOOR



FIRST FLOOR



SECOND FLOOR



399 High Road
Harrow
Middlesex
HA3 6EL

www.hintonanddownes.co.uk
sales@hintonanddownes.com
0208 861 1066

Agents Note: Whilst every care has been taken to prepare these sales particulars, they are for guidance purposes only. All measurements are approximate and for general guidance purposes only and whilst every care has been taken to ensure their accuracy, they should not be relied upon and potential buyers are advised to recheck the measurements