

EST. 1999

WILLIAMS AND DONOVAN

EXCELLENCE IN ESTATE AGENCY

Lascelles Gardens, Ashingdon, SS4 3BP



Guide Price:
£375,000 - £400,000

Situated in the heart of Ashingdon in a popular residential location is this spacious three bedroom detached chalet with dressing room and en suite to bedroom two. Offering versatile living accommodation to ground floor with large lounge/diner, large conservatory to rear, landscaped rear garden with Koi carp pond and in and out driveway providing off street parking for several vehicles. Within walking distance to all local amenities.

Viewing advised. Council Tax Band: D.

EPC Rating: E. Our Ref: 20035.

1 Woodlands Parade, Main Road, Hockley, Essex SS5 4QU

sales@wdhockley.com | sales@wdbenfleet.com | lettings@wdlets.com
01702 200666 | www.williamsanddonovan.com



Accommodation comprises:

Entrance via uPVC glazed entrance door to entrance hall.

ENTRANCE HALL

Radiator. Wood effect flooring.



GROUND FLOOR BEDROOM ONE 14' 4" x 9' (4.37m x 2.74m)

Double glazed window to front aspect. Fitted wardrobes. Radiator. Coving to textured ceiling.



GROUND FLOOR BATHROOM

Obscure double glazed windows to rear aspect. A four piece suite comprising corner bath with telephone handset shower attachment, tiled double shower enclosure with thermostatic shower, pedestal wash hand basin and close coupled wc. Radiator. Part tiled walls. Tiled flooring. Coving to textured ceiling.



LOUNGE/DINER 25' x 10' 3" (7.62m x 3.12m)

Double glazed bay window to front aspect. Stairs to first floor accommodation. Radiator. Wood effect flooring. Coving to textured ceiling. Door through to kitchen.



KITCHEN 10' 3" x 8' 6" (3.12m x 2.59m)

Double glazed window to rear aspect. A range of base and eye level units incorporating roll top work surface with single sink drainer unit. Space for freestanding cooker with tiled splash back and extractor above. Space and plumbing for appliances. Tile effect flooring. Door through to conservatory.



CONSERVATORY 19' 8" x 12' 7" (5.99m x 3.84m)

Double glazed windows to rear aspect. Double glazed French doors providing access to rear garden. French doors providing access to garage. Wood effect flooring.



FIRST FLOOR LANDING



BEDROOM TWO 12' 1" x 9' 2" (3.68m x 2.79m)

Double glazed window to front aspect. Radiator. Coving to textured ceiling. Open plan through to dressing area.



DRESSING AREA 9' 1" x 6' 2" (2.77m x 1.88m)

Coving to textured ceiling. Access to en suite.



EN SUITE

Obscure double glazed window to rear aspect. A three piece suite comprising corner shower cubicle with thermostatic shower, pedestal wash hand basin and close coupled wc. Part tiled walls. Tiled flooring.



BEDROOM THREE 12' 1" x 9' 3" (3.68m x 2.82m)

Double glazed window to rear aspect. Over stairs storage cupboard. Radiator. Wood effect flooring. Coving to textured ceiling.

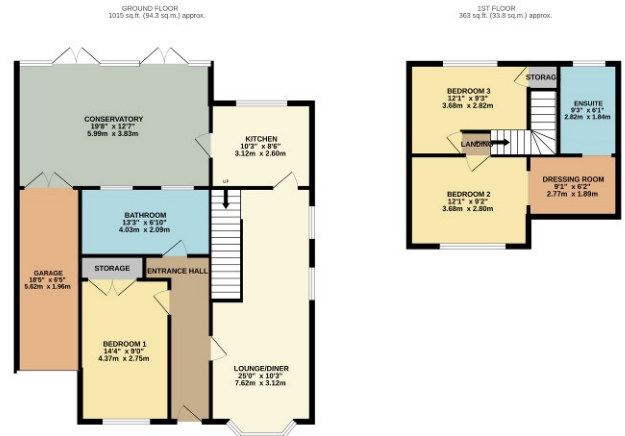


EXTERIOR.

A LOW MAINTENANCE LANDSCAPED REAR GARDEN which is fully block paved with feature brick built Koi carp pond with pergola. SUMMERHOUSE to remain. Shed to remain. Side access providing storage only.



The FRONT has own block paved in and out driveway providing off street parking for several vehicles leading to ATTACHED GARAGE 18' 5" x 6' 5" (5.61m x 1.96m) with double opening doors.



TOTAL FLOOR AREA: 3395 sq.ft. (314.7 sq.m.) approx.
 Measurements were taken on 11/03/2025. Measurements are for information only and do not constitute a guarantee of accuracy. The plan is for illustrative purposes only and should not be used as a basis for any legal proceedings. The agent is not responsible for any errors or omissions. Measurements are taken to the best of our knowledge and belief.