



Gilfach Cynon, £130,000

- Well-presented throughout
- Low maintenance garden
- Close to local amenities
- Ideal first-time buy
- Great transport links
- EPC Rating: D



 3  1  1



About the property

Presenting this delightful end of terrace house, in good condition, and readily available for sale with no onward chain. This property, situated in a popular location, is an ideal acquisition for first-time buyers or families in search of a comfortable dwelling.

The house features a total of three double bedrooms, providing ample space for a family or for guests. The property boasts two bathrooms, one of which is a modern wet room, while the other is a large family bathroom, both designed to cater for a busy household. The kitchen comes with a dining space, ensuring that meal times are a social occasion.

One of the standout features of this property is its prime location. With nearby schools, local amenities, and excellent public transport links, everything you need is within reach. This property truly offers a combination of comfort, convenience, and potential, making it an opportunity not to be missed. The house is just waiting for the right buyer to bring their personal touch and make it their own.



Accommodation

Hall

Living Room

12' 4" x 12' 9" max (3.76m x 3.89m max)

Kitchen/Diner

9' 8" Max x 17' 7" Max (2.95m Max x 5.36m Max)

Wet Room

Landing

Bedroom 1

12' 8" x 9' 7" (3.86m x 2.92m)

Bedroom 2

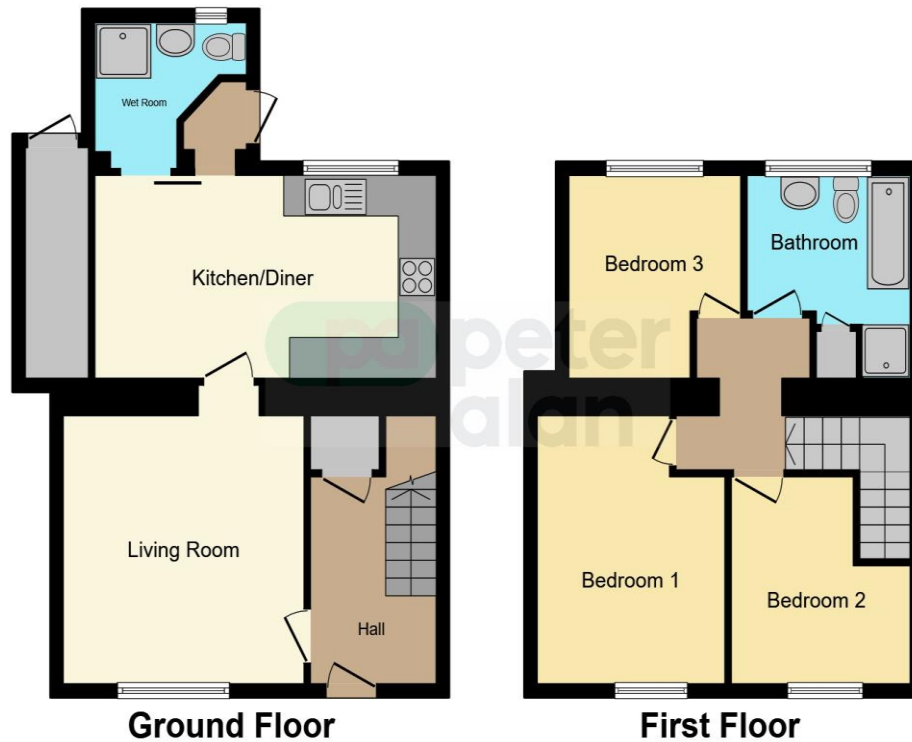
Bedroom 3

Bathroom

01685 722223

merthyrdfil@peteralan.co.uk

Floorplan



This floor plan is for illustrative purposes only. It is not drawn to scale. Any measurements, floor areas (including any total floor area), openings and orientation are approximate. No details are guaranteed, they cannot be relied upon for any purpose and they do not form part of any agreement. No liability is taken for any error, omission or misstatement. A party must rely upon its own inspection(s). Powered by www.focalagent.com

Important Information

Note while we endeavour to make our sales details accurate and reliable, if there is any point which is of particular interest to you, please contact the office and we will be pleased to confirm the position for you. We have not personally tested any apparatus, equipment, fixtures, fittings or services and cannot verify they are in working order or fit for their purposes. Nothing in these particulars is intended to indicate that carpets or curtains, furnishings or fittings, electrical goods (whether wired or not), Gas fires or light fittings or any other fixtures not expressly included form part of the property offered for sale. This computer generated Floorplan, if applicable, is intended as a general guide to the layout and design of the property. It is not to scale and should not be relied upon for dimensions. Tenure: We cannot confirm the tenure of the property as we have not had access to the legal documents. The buyer is advised to obtain verification from their solicitor or surveyor.

Peter Alan Limited is registered in England and Wales under company number 2073153, Registered Office is Cumbria House, 16-20 Hockliffe Street, Leighton Buzzard, Bedfordshire, LU7 1GN. VAT Registration Number is 500 2481 05. For activities relating to regulated mortgages and non-investment insurance contracts, Peter Alan Limited is an appointed representative of Connells Limited which is authorised and regulated by the Financial Conduct Authority. Connells Limited's Financial Services Register number is 302221. Most buy-to-let

