



Flat 5, 55a West Street
Bridlington

YO15 3DZ

ASKING PRICE OF

£59,950

1 Bedroom Second Floor Flat



Lounge/Kitchen



1



1



1



On Street
Parking



Gas Central Heating

Flat 5, 55a West Street, Bridlington, YO15 3DZ

This beautifully presented second-floor flat offers a stylish and contemporary living space. It features an open-plan lounge, dining, and kitchenette area, one well-proportioned bedroom, and a modern shower room. A balcony provides sea views towards the harbour, perfect for enjoying the coastal atmosphere. Located just a stone's throw from the seafront and harbour, the flat is offered with no onward chain, making it an ideal coastal retreat or investment opportunity.

West Street in the town centre is a bustling hub offering convenience of town centre amenities and a vibrant coastal lifestyle. With access to all local schools, the area offers a wide range of amenities, including the picturesque harbour, home to eateries including Salt on the Harbour with its fabulous views. Residents can enjoy attractions including The Spa, Leisure Centre, cinema, bowling, arcades,

souvenir shops and fairground. Numerous restaurants, cafés and public houses cater for all tastes, while excellent transport links are provided by the railway and bus stations. This location truly offers something for everyone in the heart of Bridlington.

Bridlington is a charming seaside town on the East Yorkshire coast, known for its beautiful sandy beaches, working harbour and vibrant promenade. It offers a mix of traditional seaside attractions, independent shops, ice-cream parlours and fresh seafood. The town also offers scenic coastal walks, the stunning Flamborough Head cliffs nearby and cultural sites like Bridlington Priory and Sewerby Hall. With a friendly atmosphere and plenty of leisure activities, Bridlington is an ideal spot for both relaxation and adventure by the sea.



Entrance Hall



Open Plan Lounge/Kitchen



Kitchen Area



Lounge Area

Accommodation

COMMUNAL ENTRANCE

With a staircase leading to the second floor.

ENTRANCE HALL

9' 10" x 4' 3" (3.00m x 1.30m)

With loft access and doors to the lounge, shower room and bedroom.

OPEN PLAN LOUNGE AND KITCHEN

14' 7" x 12' 0" (4.46m x 3.67m)

A bright and spacious open plan living area featuring a window to the front aspect and access to a balcony enjoying partial sea views. The kitchen is fitted with a range of base and drawer units with worktops over, complemented by a tiled splashback and tile-effect vinyl flooring. There is a stainless steel sink with mixer tap sitting beneath a further window, integrated oven, and space for a small fridge freezer.

BEDROOM

11' 1" x 6' 11" (3.38m x 2.13m)

A well-proportioned double bedroom featuring a window to the rear aspect and fitted wardrobes providing ample storage.

SHOWER ROOM

9' 10" x 4' 11" (3.00m x 1.51m)

The shower room is recently fitted and beautifully presented, featuring a double-length shower enclosure with a glass screen and wet wall panelling, a vanity unit with integrated wash hand basin, and a WC. The room is completed with durable vinyl flooring, an extractor fan, and a hot water heater, combining style and practicality.



Bedroom



Shower Room



View From Balcony



Local Area

HEATING

No fixed heating.

DOUBLE GLAZING

UPVC double glazing throughout.

PARKING

Parking on a first come first served basis to the side of the block.

TENURE

We understand that the property is freehold and is offered with vacant possession upon completion.

SERVICES

Electric and water are available at the property.

COUNCIL TAX BAND - A

ENERGY PERFORMANCE CERTIFICATE – RATED D



South Side Bridlington



Bridlington



harbour 2



Front Elevation

NOTE

Heating systems and other services have not been checked.

All measurements are provided for guidance only.

None of the statements contained in these particulars as to this property are to be relied upon as statements or representations of fact. In the event of a property being extended or altered from its original form, buyers must satisfy themselves that any planning regulation was adhered to as this information is seldom available to the agent.

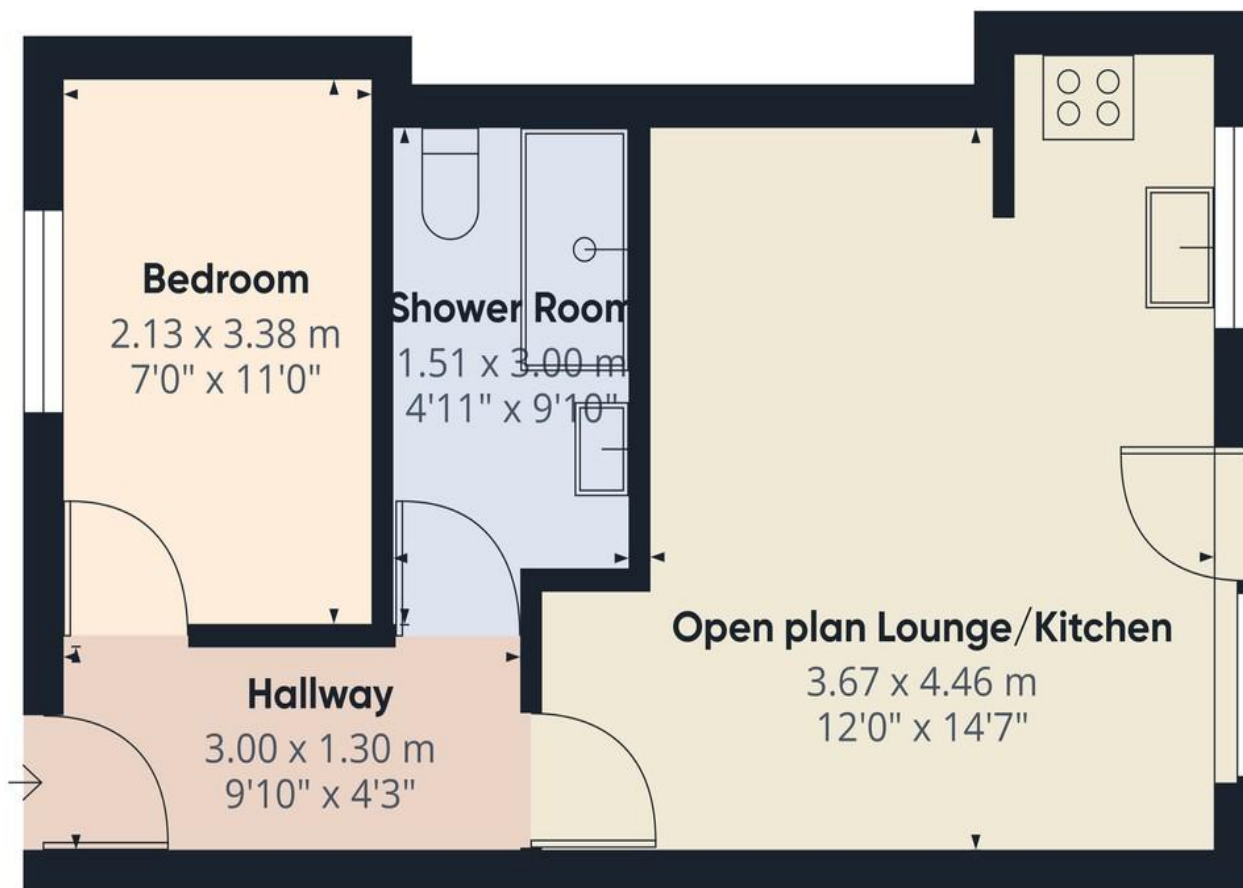
Floor plans are for illustrative purposes only.

VIEWING

Strictly by appointment with Ulllyotts 01262 401401
- Option 1.

Regulated by RICS

The digitally calculated floor area is (33.5 m²). This area may differ from the floor area on the Energy Performance Certificate.



Approximate total area⁽¹⁾
33.5 m²
360 ft²

(1) Excluding balconies and terraces

Calculations reference the RICS IPMS 3C standard. Measurements are approximate and not to scale. This floor plan is intended for illustration only.

GIRAFFE360





Flat 5, 55a West Street



▪ Est. 1891 ▪
Ulllyotts
Estate Agents



16 Prospect Street,
Bridlington, YO15 2AL

Telephone 01262 401401

Email sales@ullyottsbrid.co.uk

64 Middle Street South,
Driffield, YO25 6QG

Telephone 01377 253456

Email sales@ullyotts.co.uk

www.ullyotts.co.uk



- Residential Sales
- Property Management
- Valuations

