



## Pennyfields, Greenmeadow offers over £155,000

- No onward chain
- Enclosed, low-maintenance rear garden
- Communal parking available
- Spacious kitchen diner
- Convenient downstairs WC
- Ideal for first-time buyers or families
- Council Tax: B.
- Well-presented three-bedroom mid-terrace home
- EPC Rating: C



 3  1  1



## About the property

Offered with no onward chain, this well-presented home features a spacious kitchen/diner ideal for modern family living, lounge and three good size bedrooms. The property benefits from communal parking and is conveniently located within a popular residential area close to local amenities.





## Accommodation

### Hallway

### Wc

### Lounge

15' 7" x 11' 1" ( 4.75m x 3.38m )

### Kitchen/Dining Room

18' 2" x 11' 2" ( 5.54m x 3.40m )

### Bathroom

6' 6" x 6' ( 1.98m x 1.83m )

### Bedroom One

17' 5" x 9' 2" ( 5.31m x 2.79m )

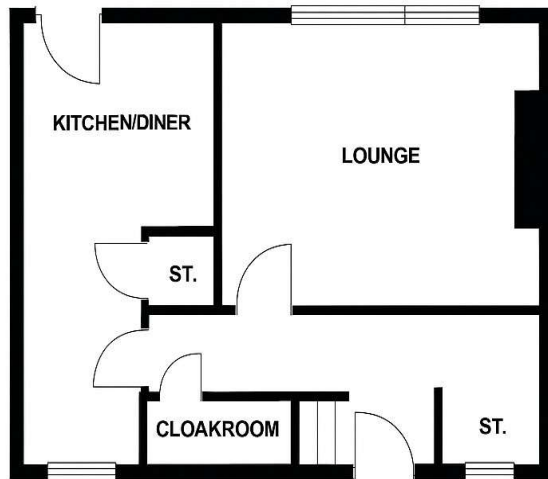
### Bedroom Two

11' 4" x 9' 9" ( 3.45m x 2.97m )

### Bedroom Three

11' 4" x 7' 9" ( 3.45m x 2.36m )

## Floorplan



**GROUND FLOOR**



**FIRST FLOOR**

## Important Information

Note while we endeavour to make our sales details accurate and reliable, if there is any point which is of particular interest to you, please contact the office and we will be pleased to confirm the position for you. We have not personally tested any apparatus, equipment, fixtures, fittings or services and cannot verify they are in working order or fit for their purposes. Nothing in these particulars is intended to indicate that carpets or curtains, furnishings or fittings, electrical goods (whether wired or not). Gas fires or light fittings or any other fixtures not expressly included form part of the property offered for sale. This computer generated Floorplan, if applicable, is intended as a general guide to the layout and design of the property. It is not to scale and should not be relied upon for dimensions. Tenure: We cannot confirm the tenure of the property as we have not had access to the legal documents. The buyer is advised to obtain verification from their solicitor or surveyor.