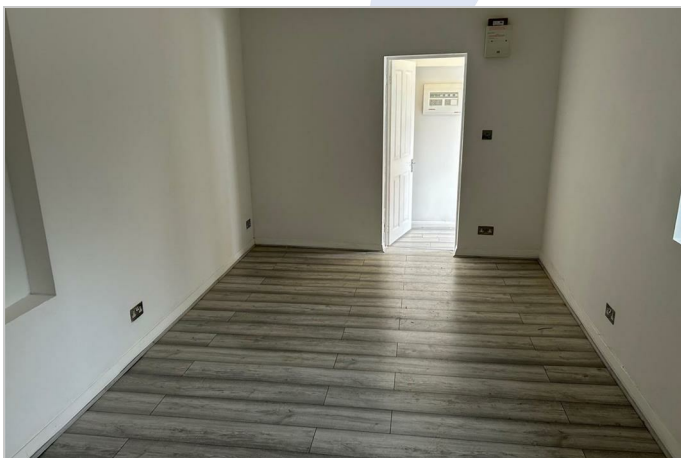


Unit C 43 Old Bethnal Green Road, Bethnal Green, E2 6PR



£1,300

Unit C 43 Old Bethnal Green Road, Bethnal Green, E2 6PR

Unit C - £1500pcm (Ground Floor Front)

McDowalls are delighted to offer to the commercial rental market, A building located a stones throw from Bethnal Green Underground Station.

This property is a three storey detached Commercial Building in the highly desired location of Bethnal Green. Property holds an E use class.

CEPC - Band C

WATER / WASTE - Mains (Castle Water)

ELECTRIC - Mains (EON)

BUSINESS RATES - TBC

PARKING - On Street & Permit Required From Tower Hamlets Council

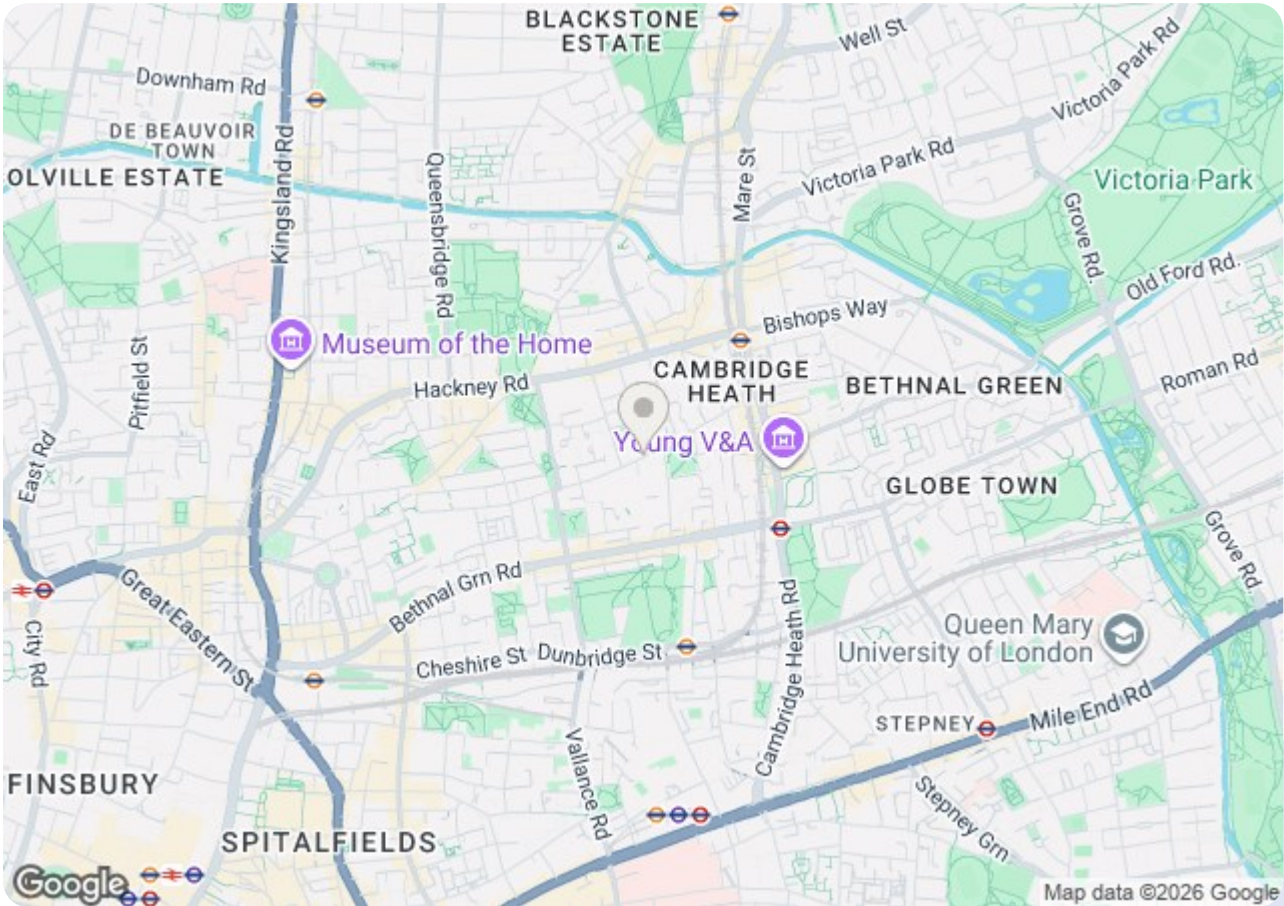
NB - Tenants are responsible for monthly rental payments, metered electric, business rates (If applicable) broadband & commercial waste management.




43 OLD BETHNAL GREEN ROAD (5 X COMMERCIAL UNITS)

Whilst every attempt has been made to ensure the accuracy of the floorplan contained herein, measurements of doors, windows, rooms and any other items are approximate and no responsibility is taken for any error, omission or mis-statement. This plan is for illustrative purposes only and should be used as such by any prospective purchaser. The services, systems and appliances shown have not been tested and no guarantee as to their operability or efficiency can be given.
Made with Metropix ©2020.

54/56 Barking Road
 East Ham, London E6 3BP
 Telephone: (020) 8472 4422
 Property Management: (020) 8471 4224
 Fax: (020) 8471 5052
 E-mail: eastham@mcdowalls.com
 Website: www.mcdowalls.com



Energy Efficiency Rating		
	Current	Potential
Very energy efficient - lower running costs		
(92 plus) A		
(81-91) B		
(69-80) C		
(55-68) D		
(39-54) E		
(21-38) F		
(1-20) G		
Not energy efficient - higher running costs		
England & Wales	EU Directive 2002/91/EC	

Environmental Impact (CO ₂) Rating		
	Current	Potential
Very environmentally friendly - lower CO ₂ emissions		
(92 plus) A		
(81-91) B		
(69-80) C		
(55-68) D		
(39-54) E		
(21-38) F		
(1-20) G		
Not environmentally friendly - higher CO ₂ emissions		
England & Wales	EU Directive 2002/91/EC	