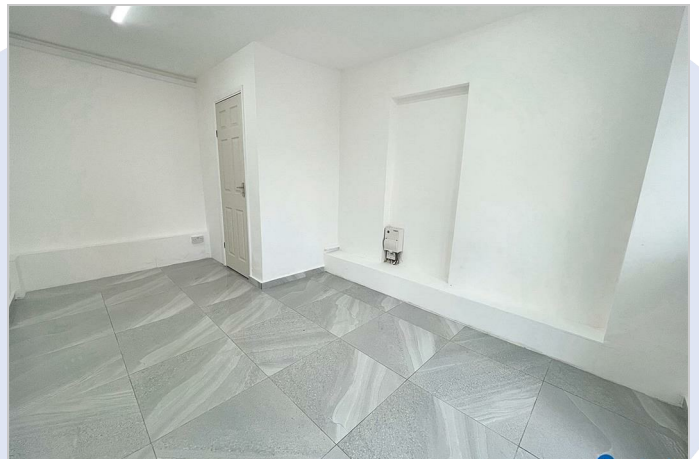


**135c Green Street, London, E7 8JE**



**£950 Per month**

**135c Green Street, London, E7 8JE**

## GREEN STREET LOCK UP SHOP & WC

McDowalls are pleased to bring this freshly renovated, versatile lock-up shop to market. Located on the popular Green Street it offers a clean, modern space ideal for a small office / light business use / retail or secure storage.

It benefits from high foot traffic, excellent local transport and amenities.

RENT - £950pcm

INSURANCE - Included In Rental Demand

LEASE - Upto 3 Years (Outside of the 1954 LL&TA)

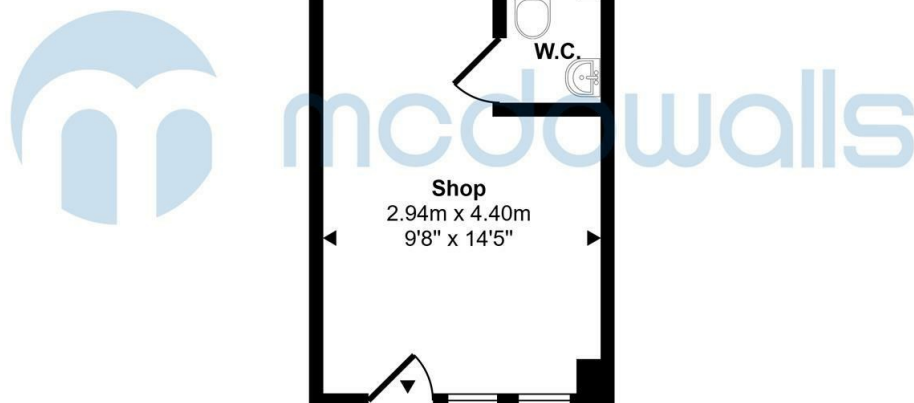
MAINS SERVICES - Electric/Water

COUNCIL - London Borough Of London

BUSINESS RATES - RV £4900

EPC - Band E

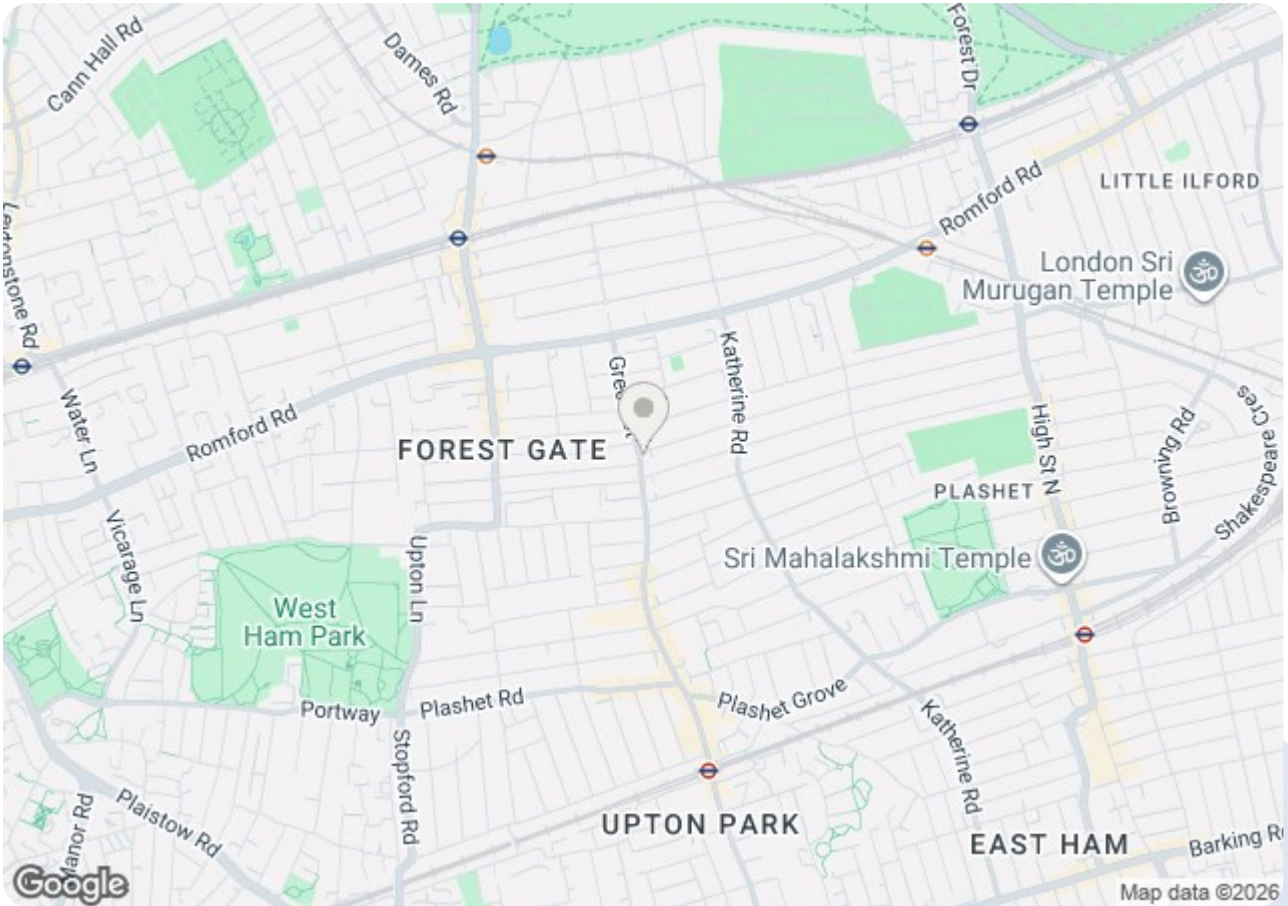
Approx Gross Internal Area  
13 sq m / 142 sq ft




Floorplan

This floorplan is only for illustrative purposes and is not to scale. Measurements of rooms, doors, windows, and any items are approximate and no responsibility is taken for any error, omission or mis-statement. Icons of items such as bathroom suites are representations only and may not look like the real items. Made with Made Snappy 360.

54/56 Barking Road  
 East Ham, London E6 3BP  
 Telephone: (020) 8472 4422  
 Property Management: (020) 8471 4224  
 Fax: (020) 8471 5052  
 E-mail: eastham@mcdowalls.com  
 Website: www.mcdowalls.com



Energy Efficiency Rating		
	Current	Potential
Very energy efficient - lower running costs		
(92 plus) <b>A</b>		
(81-91) <b>B</b>		
(69-80) <b>C</b>		
(55-68) <b>D</b>		
(39-54) <b>E</b>		
(21-38) <b>F</b>		
(1-20) <b>G</b>		
Not energy efficient - higher running costs		
<b>England &amp; Wales</b>	EU Directive 2002/91/EC	

Environmental Impact (CO <sub>2</sub> ) Rating		
	Current	Potential
Very environmentally friendly - lower CO <sub>2</sub> emissions		
(92 plus) <b>A</b>		
(81-91) <b>B</b>		
(69-80) <b>C</b>		
(55-68) <b>D</b>		
(39-54) <b>E</b>		
(21-38) <b>F</b>		
(1-20) <b>G</b>		
Not environmentally friendly - higher CO <sub>2</sub> emissions		
<b>England &amp; Wales</b>	EU Directive 2002/91/EC	