

Estate Agents
Commercial Agents
Letting & Management
Financial Services

London Properties



Bishop Ken Road, Harrow Weald, Middlesex

London Properties are pleased to offer to the market this extended four-bedroom semi-detached family home situated in a sought-after location close to the amenities, several outstanding schools and transport links of Wealdstone High Street and Harrow and Wealdstone Station. The property benefits from entrance hallway, front reception, rear reception open-plan to extended kitchen/diner, downstairs shower room, family bathroom, gas central heating, fully double glazed, 90ft rear garden and off street parking for 2 cars. The property benefits from no upper chain and internal viewings are highly recommended through London properties by appointment only.

£579,950 Freehold



Harrow Weald Branch Tel: 020 8861 4615

95 High Street, Harrow Weald, Middlesex, HA3 5DL. Fax: 020 8861 3610 Email: info@london-properties.co.uk

www.london-properties.co.uk

Proprietor: Mukesh B. Mehta

ADDITIONAL PHOTOGRAPHS



PIC 1



PIC 2



PIC 3



PIC 4



PIC 5

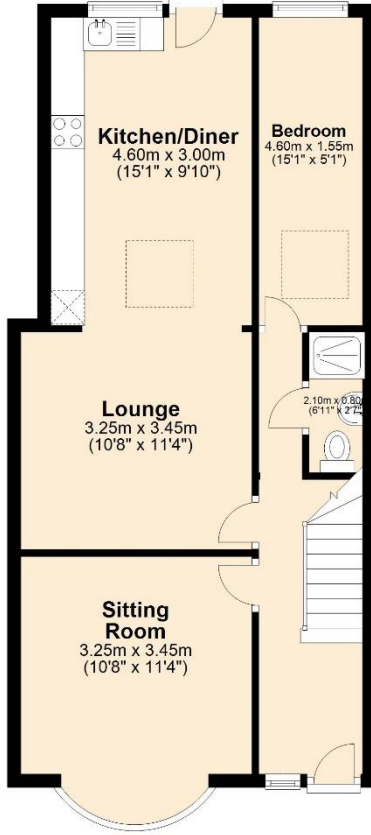


PIC 6

London Properties on behalf of themselves and for the vendors of these properties whose agents they are, give notice that: (1) These particulars do not constitute a contract or an offer. (2) All statements made in these particulars relating to these properties are made without responsibility on the part of London Properties or the vendor. (3) Any intending purchaser must satisfy himself by inspection or otherwise as to the correctness of these particulars. (4) London Properties or any person in their employment has no authority to make or give any warranty or representation what so ever in relation to these properties. (5) The above measurements were taken by a sonic measuring device and cannot be guaranteed to be 100% accurate.

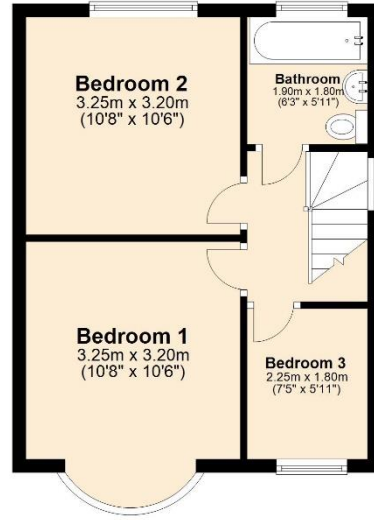
Ground Floor

Approx. 55.9 sq. metres (601.9 sq. feet)



First Floor

Approx. 34.0 sq. metres (366.3 sq. feet)



Total area: approx. 89.9 sq. metres (968.2 sq. feet)

This plan is for illustration purposes only and should be used as such by any prospective purchaser. Whilst every attempt has been made to ensure the accuracy of the floor plan contained here, measurements of doors, windows, rooms and any other items are approximate and no responsibility is taken for any error, omission or mis-statement.
Plan produced using PlanUp.

London Properties on behalf of themselves and for the vendors of these properties whose agents they are, give notice that: (1) These particulars do not constitute a contract or an offer. (2) All statements made in these particulars relating to these properties are made without responsibility on the part of London Properties or the vendor. (3) Any intending purchaser must satisfy himself by inspection or otherwise as to the correctness of these particulars. (4) London Properties or any person in their employment has no authority to make or give any warranty or representation what so ever in relation to these properties. (5) The above measurements were taken by a sonic measuring device and cannot be guaranteed to be 100% accurate.

Bishop Ken Road, Harrow Weald, Middlesex, HA3 7HU

ACCOMMODATION COMPRISES:

Entrance through double glazed front door opening to.....

ENTRANCE HALL:

Front aspect double glazed window, radiator, understairs storage cupboards x 2, one housing gas central heating boiler, power point and hardwood flooring.

RECEPTION 1:

10' 8" (3m 25cm) x 11' 4" (3m 45cm). Front aspect double glazed bay window, radiator, coved ceiling, power points and hardwood flooring.

RECEPTION 2:

10' 8" (3m 25cm) x 11' 4" (3m 45cm). Radiator, power points, coved ceiling and hardwood flooring.

KITCHEN/DINER:

15' 1" (4m 60cm) x 9' 10" (3m 0cm). Rear aspect double glazed window, sky light, wall and base level units, integrated fridge/freezer, integrated hob and oven with extractor hood above, stainless steel sink unit, splash back tiles, worktop, power points, tower radiator, plumbed for washing machine, ceiling spotlights, hardwood flooring and rear aspect double glazed door opening to rear garden.

DOWNSTAIRS SHOWER ROOM:

Built-in shower cubicle, low level WC, pedestal wash hand basin, extractor fan, ceiling spotlights, fully tiled walls and tiled flooring.

BEDROOM 4:

15' 1" (4m 60cm) x 5' 1" (1m 55cm). Rear aspect double glazed window, radiator, power points, coved ceiling and hardwood flooring.

Stairs to first floor:

Fitted carpet.

Landing:

Side aspect double glazed window, access to full board loft storage with power and light, power point and fitted carpet.

BEDROOM 1:

10' 8" (3m 25cm) x 10' 6" (3m 20cm). Front aspect double glazed bay window, radiator, power points and fitted carpet.

BEDROOM 2:

10' 8" (3m 25cm) x 10' 6" (3m 20cm). Rear aspect double glazed bay window, radiator, power points and fitted carpet.

BEDROOM 3:

Front aspect angled double glazed window, power points, radiator and fitted carpet.

London Properties on behalf of themselves and for the vendors of these properties whose agents they are, give notice that: (1) These particulars do not constitute a contract or an offer. (2) All statements made in these particulars relating to these properties are made without responsibility on the part of London Properties or the vendor. (3) Any intending purchaser must satisfy himself by inspection or otherwise as to the correctness of these particulars. (4) London Properties or any person in their employment has no authority to make or give any warranty or representation what so ever in relation to these properties. (5) The above measurements were taken by a sonic measuring device and cannot be guaranteed to be 100% accurate.

BATHROOM:

6' 3" (1m 91cm) x 5' 11" (1m 80cm). Rear aspect double glazed frosted window, panel enclosed bath with hand held shower attachment, low level WC, pedestal wash hand basin, heated towel rail, extractor fan, fully tiled walls and tiled flooring.

Exterior:

Approximately 90ft: Central lawn area and paved borders and side access gate.

FRONTAGE:

Off street parking for 2 cars.

GENERAL INFORMATION:**TENURE:**

Freehold

LOCAL AUTHORITY:

Harrow

MAILING LIST:

We at the London Properties Sales Team hope to be in regular contact with you to assist in your search for a suitable property. To keep our records up to date we request that you keep us informed as to the progress of your search so as to avoid any unnecessary inconvenience. Thank you for your assistance in this matter.

DETAILS BY E-MAIL:

We can send full colour sales particulars by e-mail. If you would like to receive details via this medium, please either telephone us with your e-mail address or send an e-mail to the sales team at: info@london-properties.co.uk

FREE VALUATIONS & MARKETING ADVICE:

We at London Properties would like to assist you with the sale of your property? Just contact the sales team and we will be pleased to offer you a free valuation and market appraisal, a service that we provide with obligation. Competitive fees are available for both sole and multiple agency instructions. Please contact the sales team on: **020 8861 4615**

**MORTGAGES: We can offer help and advice in arranging your mortgage.
Written quotations are available on request. Please contact this office.**

REMEMBER: YOUR HOME IS AT RISK IF YOU DO NOT KEEP UP WITH REPAYMENTS ON A MORTGAGE OR OTHER LOANS SECURED ON IT.

For your FREE, No-obligation lettings or sales valuation, Please call 020 8861 4615

See all of our
properties on

ZOOPLA

View all of our
properties on

 PrimeLocation

Find us on
globrix.com
Your property search engine

Homes&
Property

A member of  **OnTheMarket**

Daltonsbusiness.com
the best place to buy a business

 **NovaLoca**
THE COMMERCIAL PROPERTY FINDER

London Properties

London Properties on behalf of themselves and for the vendors of these properties whose agents they are, give notice that: (1) These particulars do not constitute a contract or an offer. (2) All statements made in these particulars relating to these properties are made without responsibility on the part of London Properties or the vendor. (3) Any intending purchaser must satisfy himself by inspection or otherwise as to the correctness of these particulars. (4) London Properties or any person in their employment has no authority to make or give any warranty or representation what so ever in relation to these properties. (5) The above measurements were taken by a sonic measuring device and cannot be guaranteed to be 100% accurate.

London Properties