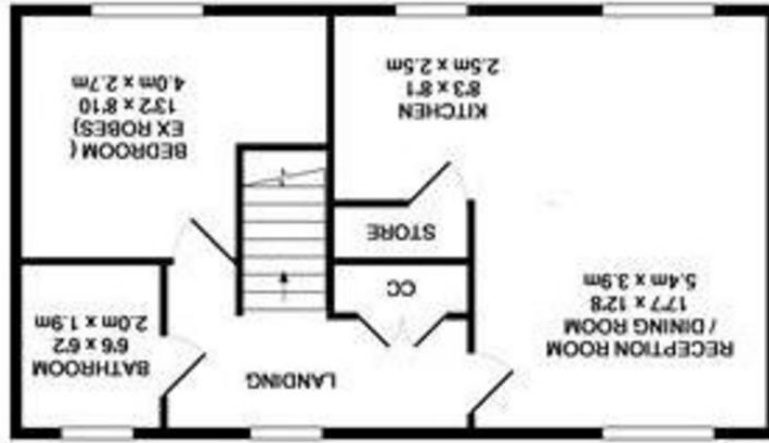
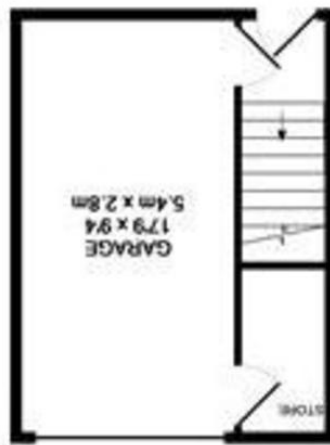


Agents Note: Whilst every care has been taken to prepare these sales particulars, they are for guidance purposes only. All measurements are approximate and whilst every care has been taken to ensure their accuracy, they should not be relied upon and potential buyers are advised to recheck the measurements.

1ST FLOOR
APPROX FLOOR AREA 52.4 SQ.M
(564 SQ.FT.)
TOTAL APPROX FLOOR AREA 104.8 SQ.M (1128 SQ.FT.)



GROUND FLOOR



17 Freestone Way, Katherine Park, Corsham, Wiltshire,



17 Freestone Way, Katherine Park, Corsham, Wiltshire, SN13 9FF

- One bedroom (freehold) Coach house
- Front garden
- Neutral décor throughout
- Garage and driveway parking
- Modern kitchen
- Gas central heating and uPVC double glazing

£165,000



Situation and Description

A well presented coach house offering accommodation comprising entrance hall, sitting room/dining room/kitchen, double bedroom and a bathroom.

Externally there is an easily maintainable garden to the front, garage and driveway parking for one car.

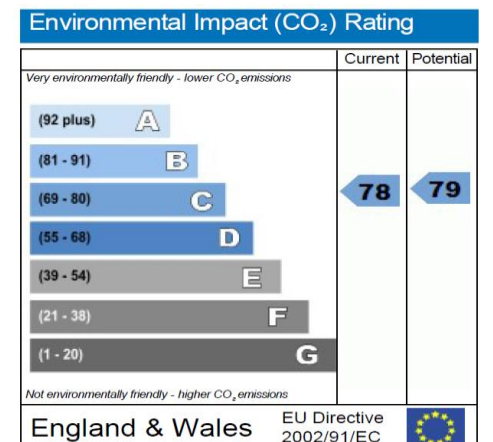
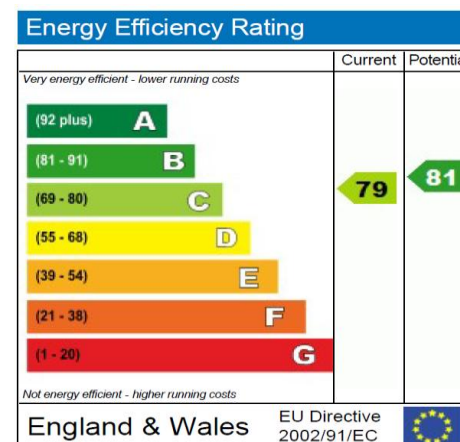
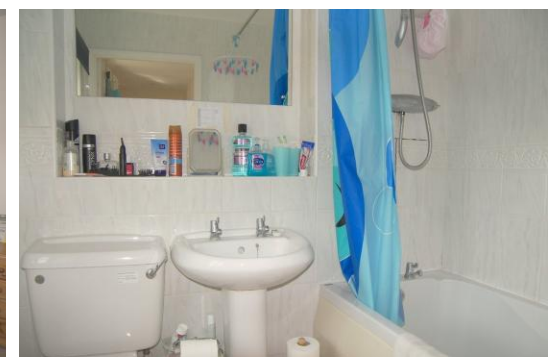
The property is neutrally decorated throughout and benefits from gas central heating, uPVC double glazing, modern kitchen and bathroom with white suite.



Corsham's picturesque and historic high street which is within easy access offers a variety of interesting shops, cafes and restaurants. Other local amenities include junior and comprehensive schooling, doctors surgery and leisure centre. Ideally placed for access to the A4, the Georgian city of Bath is within 9 miles with it's vast array of shopping, cultural and leisure amenities and high speed rail service to London, which is also available at nearby Chippenham. There is also fast road access to the M4 motorway via junction 17.



EPC rating C



Directions

From the Methuen Arms turn right into Pickwick Road. Continue straight on at the next two mini-roundabouts and take the first exit at the next roundabout on to the A4. Turn left at the second mini-roundabout into Park Lane and left at the next roundabout into Freestone Way. The property will be found on your left hand side.