



Q Investments
International

2 Bedroom Apartment / Flat
Marylebone

£3,986 per month
<https://qinvestments.london>



London, Marylebone

Fully Furnished Large 2 Bedroom Apartment in a prestigious mansion building next to Regents Park, London NW8.

Size 926 square feet / 86 m2

*Virtual walk through available

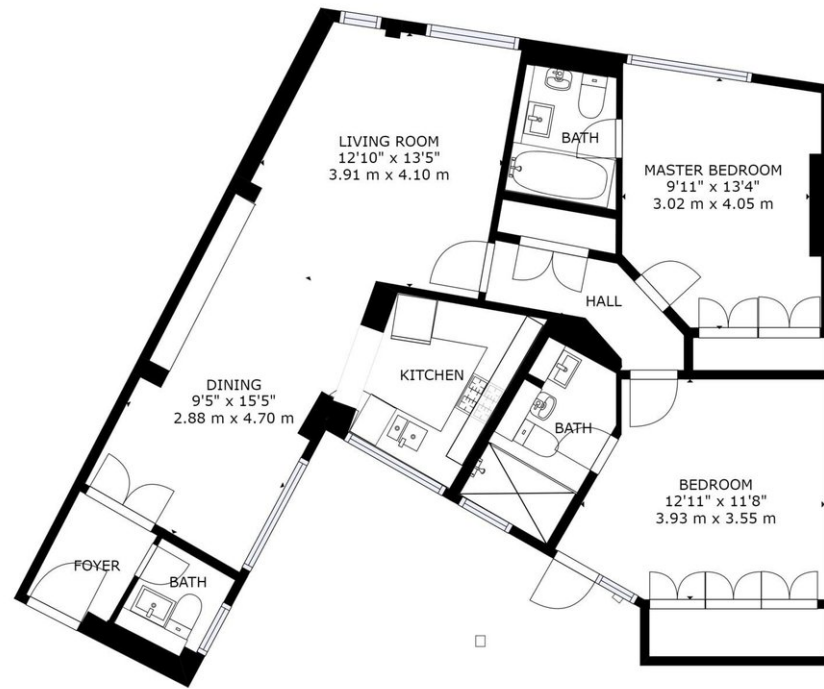
* Available now August 2022

For more information call or WhatsApp +447985487333

Ref. RLSC17

Presenting a beautifully bright flat to rent in St. John's Wood. The property is on Park Road and comprises 2 bedrooms, 2 bathrooms and 1 WC.

Available now, covering 923 sq. ft. in living space and situated on the first floor, this modern property is currently furnished and comes with big windows, high ceilings and ample storage. The property also benefits from wood floors and plenty of natural light throughout, as well as porter facilities and 24hr security. One bedroom gives



FIRST FLOOR

GROSS INTERNAL AREA
 FLOOR 1: 923 sq ft, 86 m²
 TOTAL: 923 sq ft, 86 m²
 SIZES AND DIMENSIONS ARE APPROXIMATE, ACTUAL MAY VARY.

