

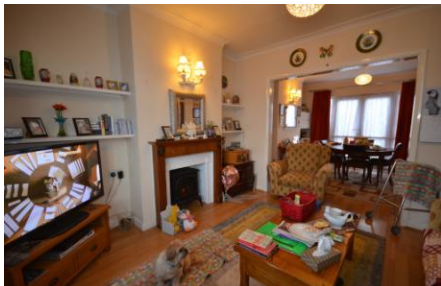


## Sancroft Road

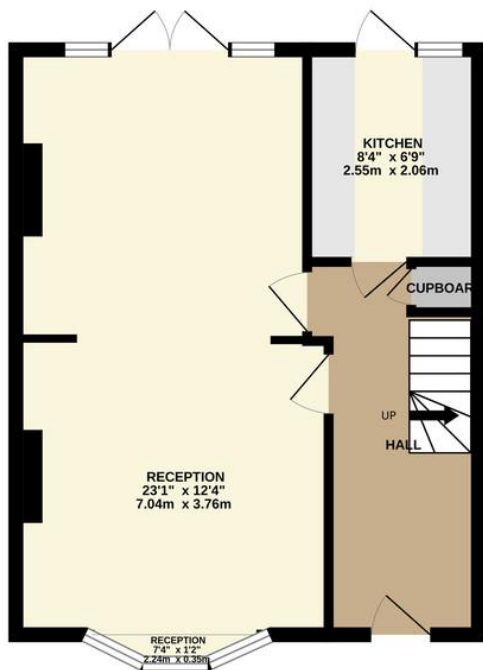
Harrow, HA3 7NX

**£560,000**

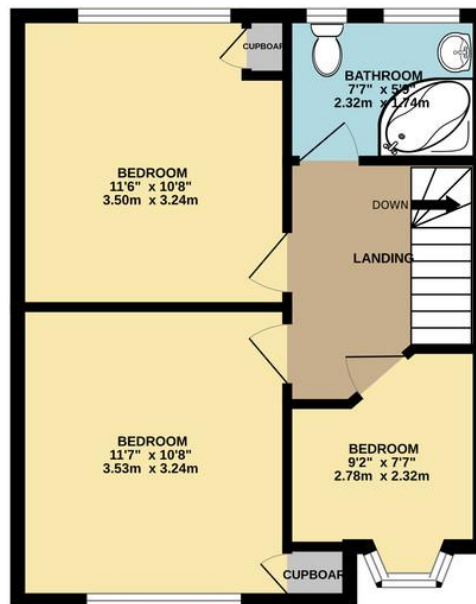
A three bedroom terraced house with a through lounge / dining room, fitted kitchen, first floor bathroom/ wc, off street parking to front and approx. 75' rear garden. Located close to Belmont and St Josephs primary schools and midway between Wealdstone High Street and Belmont Circle for shops.



GROUND FLOOR  
420 sq.ft. (39.0 sq.m.) approx.



1ST FLOOR  
414 sq.ft. (38.4 sq.m.) approx.



TOTAL FLOOR AREA : 834 sq.ft. (77.5 sq.m.) approx.

Whilst every attempt has been made to ensure the accuracy of the floorplan contained here, measurements of doors, windows, rooms and any other items are approximate and no responsibility is taken for any error, omission or mis-statement. This plan is for illustrative purposes only and should be used as such by any prospective purchaser. The services, systems and appliances shown have not been tested and no guarantee as to their operability or efficiency can be given.  
Made with Metropix ©2023



EPC Rating: to be confirmed

Belmont Circle Office  
506 Kenton Lane  
Harrow  
Middlesex  
HA3 8RD

[www.blacklarsestateagents.co.uk](http://www.blacklarsestateagents.co.uk)  
0208 907 7701  
[sales@blacklarsestates.co.uk](mailto:sales@blacklarsestates.co.uk)

Agents Note: Whilst every care has been taken to prepare these particulars, they are for guidance purposes only. All measurements are approximate and for general guidance purposes only and whilst every care has been taken to ensure their accuracy, they should not be relied upon and potential buyers/tenants are advised to recheck the measurements