



Goodrich Grove, offers over £390,000

- Unusually large gated plot
- Detached family home
- Sought after location
- Four bedrooms two with ensuite
- Driveway
- Garage
- EPC Rating: C



 4  3  1



About the property

A fantastic and rare opportunity to acquire this beautifully presented, spacious detached family home, set on a generous and unusually large gated plot at the end of a quiet cul-de-sac. Enjoying a pleasant outlook and surrounded by greenery, the property offers both privacy and charm.

Originally built by Bovis Homes around 2000, the home benefits from a thoughtfully designed layout. The ground floor comprises an inviting hallway, a guest WC, a comfortable lounge with a separate dining room, a study, a well-appointed kitchen, side porch and a utility room. Upstairs, there are four bedrooms, two of which feature en-suite facilities, in addition to a modern family bathroom.

Located on the edge of the ever-popular Celtic Horizon development, the property is within walking distance of a wide range of amenities and enjoys excellent access to main road connections. A gated driveway, garage, and additional driveway parking further enhance this exceptional offering, which truly must be viewed to be fully appreciated.



Accommodation

Hallway

12' 1" + doorway x 9' 3" (3.68m + doorway x 2.82m)

Kitchen

Ensuite

12' 1" x 8' 2" (3.68m x 2.49m)

Utility Room

Bedroom Two

Side Porch

11' 1" x 7' 2" (3.38m x 2.18m)

Ensuite

Dining Room

Bedrom Three

11' 1" x 8' 5" (3.38m x 2.57m)

Wc

10' 4" x 8' 2" (3.15m x 2.49m)

Bedroom Four

Lounge

9' 5" x 8' 2" (2.87m x 2.49m)

Family Bathroom

18' 7" x 10' 4" (5.66m x 3.15m)

Study

Outside

7' 3" x 7' 8" (2.21m x 2.34m)

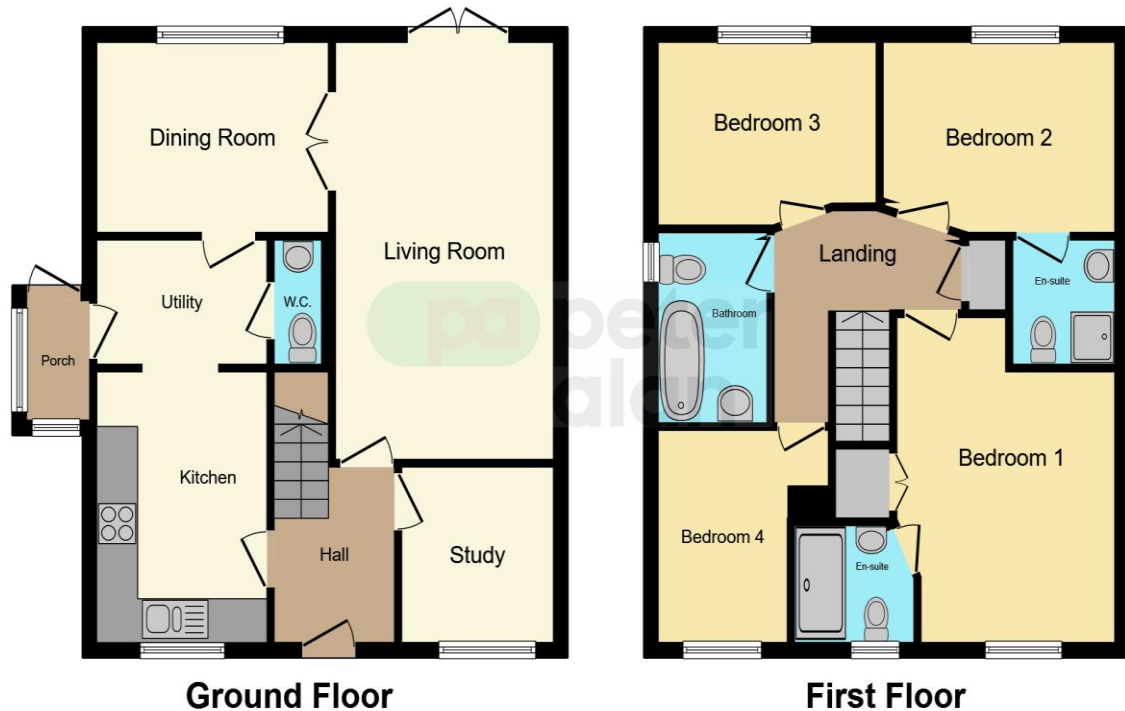
First Floor Landing

Bedroom One

01633 221892

newport@peteralan.co.uk

Floorplan



This floor plan is for illustrative purposes only. It is not drawn to scale. Any measurements, floor areas (including any total floor area), openings and orientation are approximate. No details are guaranteed, they cannot be relied upon for any purpose and they do not form part of any agreement. No liability is taken for any error, omission or misstatement. A party must rely upon its own inspection(s). Powered by www.focalagent.com

Important Information

Note while we endeavour to make our sales details accurate and reliable, if there is any point which is of particular interest to you, please contact the office and we will be pleased to confirm the position for you. We have not personally tested any apparatus, equipment, fixtures, fittings or services and cannot verify they are in working order or fit for their purposes. Nothing in these particulars is intended to indicate that carpets or curtains, furnishings or fittings, electrical goods (whether wired or not). Gas fires or light fittings or any other fixtures not expressly included form part of the property offered for sale. This computer generated Floorplan, if applicable, is intended as a general guide to the layout and design of the property. It is not to scale and should not be relied upon for dimensions. Tenure: We cannot confirm the tenure of the property as we have not had access to the legal documents. The buyer is advised to obtain verification from their solicitor or surveyor.

Peter Alan Limited is registered in England and Wales under company number 2073153, Registered Office is Cumbria House, 16-20 Hockliffe Street, Leighton Buzzard, Bedfordshire, LU7 1GN. VAT Registration Number is 500 2481 05. For activities relating to regulated mortgages and non-investment insurance contracts, Peter Alan Limited is an appointed representative of Connells Limited which is authorised and regulated by the Financial Conduct Authority. Connells Limited's Financial Services Register number is 302221. Most buy-to-let

