



Bolgoed Road, offers over £200,000

- Semi Detached
- Three Bedrooms
- Off Road Parking
- Good Sized Garden
- Close to Amenities
- EPC Rating: C



 3  1  2



About the property

Located in the heart of Pontarddulais, this spacious three-bedroom semi-detached property offers generous living accommodation, a fantastic rear garden, and a blend of character and practicality throughout.

The ground floor features a bright and comfortable living room, complete with a fireplace focal point and plenty of space for family seating. The kitchen provides ample storage, worktop space, and direct access into the conservatory, which offers an additional reception area overlooking the garden. A useful utility space adjoins the kitchen, adding valuable practicality to the home.

Upstairs, the property offers three well-proportioned bedrooms along with a large family bathroom fitted with a bath and separate shower enclosure.

Externally, this home boasts an impressive and mature rear garden with seating areas, pathways, planting sections, and a pond feature—ideal for gardening enthusiasts or those seeking peaceful outdoor space. The front of the property also benefits from off-road parking.

Situated close to local shops, schools, amenities, and easy transport links, this property provides excellent convenience while offering generous internal and external living space—perfect for families or buyers looking for a home with character and potential.



Accommodation

Ground Floor

Entrance Hall

Lounge

21' 9" Max x 13' Max (6.63m Max x 3.96m Max)

Kitchen

12' x 9' 11" (3.66m x 3.02m)

Conservatory

15' 6" Max x 12' 7" Max (4.72m Max x 3.84m Max)

First Floor

Landing

Bedroom One

12' 3" x 9' 10" (3.73m x 3.00m)

Bedroom Two

12' Max x 8' 10" Max (3.66m Max x 2.69m Max)

Bedroom Three

7' x 7' 1" (2.13m x 2.16m)

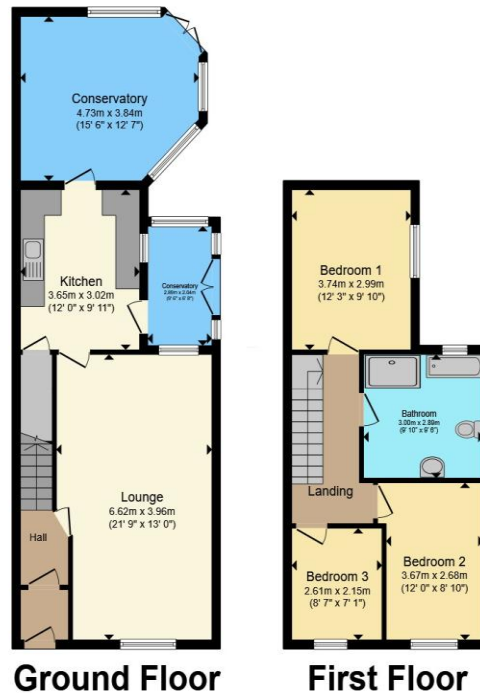
Bathroom

9' 10" x 9' 6" (3.00m x 2.90m)

01792 894422

gorseinon@peteralan.co.uk

Floorplan



Total floor area 108.6 m² (1,169 sq.ft.) approx

This floor plan is for illustrative purposes only. It is not drawn to scale. Any measurements, floor areas (including any total floor area), openings and orientation are approximate. No details are guaranteed, they cannot be relied upon for any purpose and they do not form part of any agreement. No liability is taken for any error, omission or misstatement. A party must rely upon its own inspection(s). Powered by www.propertybox.io



Important Information

Note while we endeavour to make our sales details accurate and reliable, if there is any point which is of particular interest to you, please contact the office and we will be pleased to confirm the position for you. We have not personally tested any apparatus, equipment, fixtures, fittings or services and cannot verify they are in working order or fit for their purposes. Nothing in these particulars is intended to indicate that carpets or curtains, furnishings or fittings, electrical goods (whether wired or not). Gas fires or light fittings or any other fixtures not expressly included form part of the property offered for sale. This computer generated Floorplan, if applicable, is intended as a general guide to the layout and design of the property. It is not to scale and should not be relied upon for dimensions. Tenure: We cannot confirm the tenure of the property as we have not had access to the legal documents. The buyer is advised to obtain verification from their solicitor or surveyor.

Peter Alan Limited is registered in England and Wales under company number 2073153, Registered Office is Cumbria House, 16-20 Hockliffe Street, Leighton Buzzard, Bedfordshire, LU7 1GN. VAT Registration Number is 500 2481 05. For activities relating to regulated mortgages and non-investment insurance contracts, Peter Alan Limited is an appointed representative of Connells Limited which is authorised and regulated by the Financial Conduct Authority. Connells Limited's Financial Services Register number is 302221. Most buy-to-let

