

Flat 4 Victoria Court, Grand Avenue

Hove BN3 2NH

Asking Price Of £425,000

- SOUGHT AFTER LOCATION
- FEW MINUTES WALK OF THE SEAFRONT
- FIRST FLOOR APARTMENT
- TWO DOUBLE BEDROOMS
- MODERN BATHROOM
- L-SHAPED LIVING/DINING ROOM
- KITCHEN
- GARAGE

An exceptional first-floor apartment forming part of an attractive and highly desirable block, perfectly positioned in one of Hove's most sought-after residential locations, just moments from the iconic Hove seafront.

This beautifully proportioned apartment offers elegant and spacious accommodation throughout. The property features two generous double bedrooms, both complemented by fitted wardrobes, and a stylish contemporary bathroom finished to a high standard. The separate kitchen enjoys a desirable west-facing aspect, as does the impressive L-shaped living and dining room, creating a wonderfully bright and inviting space ideal for both relaxing and entertaining while enjoying the afternoon and evening light.

Further enhancing the appeal of this superb home is the rare benefit of a private garage, along with a share of the freehold and the property is offered with no onward chain.

The location is truly outstanding. Set back on this prestigious and sought-after road, the apartment is just a short stroll from Hove's vibrant selection of independent boutiques, cafés, and acclaimed restaurants, as well as the beautiful seafront promenade.

ENTRANCE HALL Fitted cupboard with hot water cylinder, radiator.

KITCHEN Incorporating 1 1/2 bowl stainless steel sink unit with drainer and mixer tap, adjacent laminate work surface with cupboards and drawers under, matching eye level wall cupboards, inset four ring gas hob with extractor over, electric oven, integrated dishwasher, space for washing machine and American style fridge/freezer, tiled floor and splashback, 'Worcester' gas fired boiler, double glazed window.

LIVING/DINING ROOM L-shaped with three double glazed windows, two radiators.

BEDROOM 1 Fitted wardrobes, double glazed window, radiator.

BEDROOM 2 Fitted wardrobes, double glazed window, radiator.

BATHROOM Beautifully fitted with tiled panelled bath with mixer tap and shower attachment, separate walk in shower, wash hand basin with drawer under, low level w.c, tiled walls and floor.

GARAGE Located to the rear of the building with up and over door.

OUTGOINGS

SHARE IN THE FREEHOLD

LEASE Remainder of 999 year lease.

MAINTENANCE £3,700 per annum

RESERVE FUND PAYMENT £527 per calendar month.

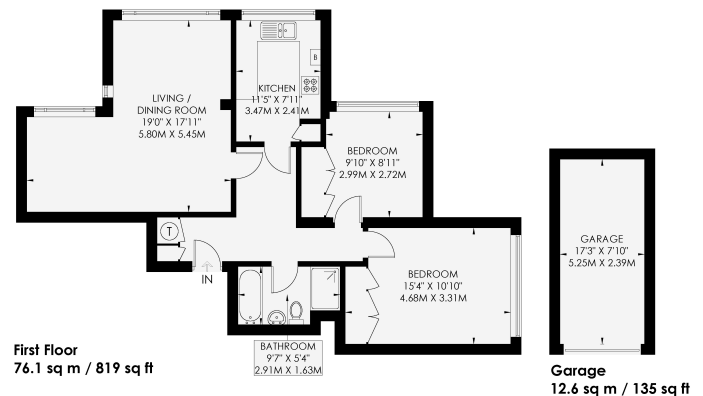
Council Tax Band D as sourced from the Brighton and Hove council website. Please note we cannot be held responsible for this information and would recommend you complete your own checks.

VICTORIA COURT

HOVE



APPROXIMATE GROSS INTERNAL AREA
88.7 sq m / 954 sq ft
INCLUDING LIMITED USE AREA OF
12.6 sq m / 135 sq ft



Whitlock & Heaps
Floor plan is for illustration and identification purposes only and is not to scale. Plans, gardens, balconies and terraces are illustrative only and excluded from all area calculations. All the plans are for illustration purposes only and are not to scale. This floor plan has been produced in accordance with Royal Institution of Chartered Surveyors' International Property Standards 2 (IPMS2).
Copyright Bespoke Property Marketing 2023

Measuring Points
S Storage Cupboard
W Fitted Wardrobe
G Garden Shortened for Display
Skylight

Hot Water Tank
Integrated Fridge/Freezer
Head Height Below
Boiler

Certified Property Measure
BESPOKE PROPERTY MARKETING

65 Sackville Road, Hove BN3 3WE
sales@whitlockandheaps.co.uk
01273 778577



Disclaimer: Whitlock & Heaps have produced these particulars in good faith and they are set out as a general guide. Accuracy is not guaranteed, nor do they form part of any contract. If there is any particular aspect of these details which you require any confirmation, please do contact us, especially if contemplating a long journey. All measurements are approximate. Fixtures and fittings, other than those mentioned above, to be agreed with the seller. Any services, systems or appliances at the property have not been tested.