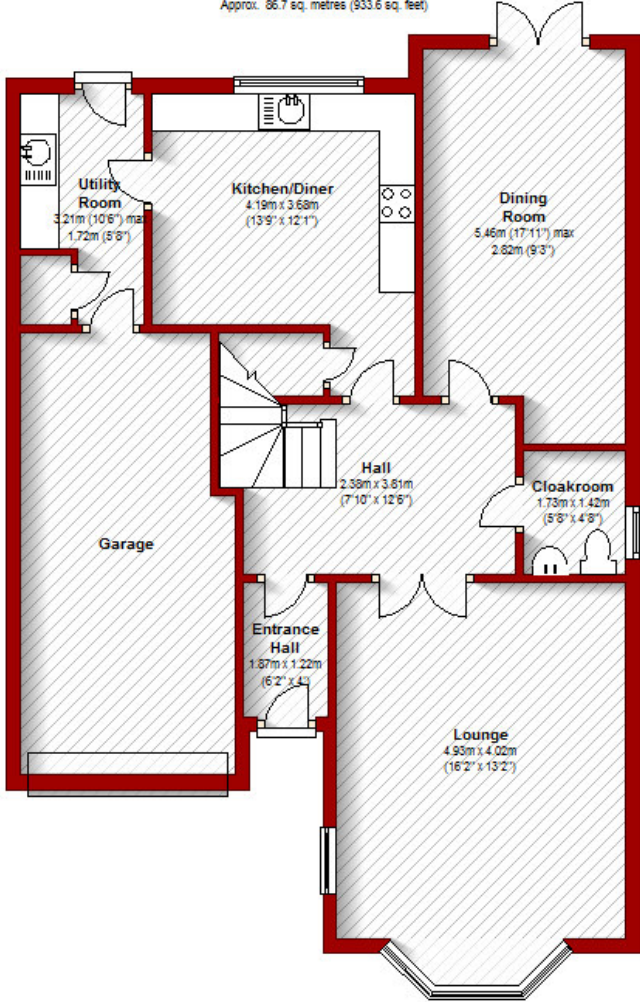


34 Northcote Avenue
Aberdeen

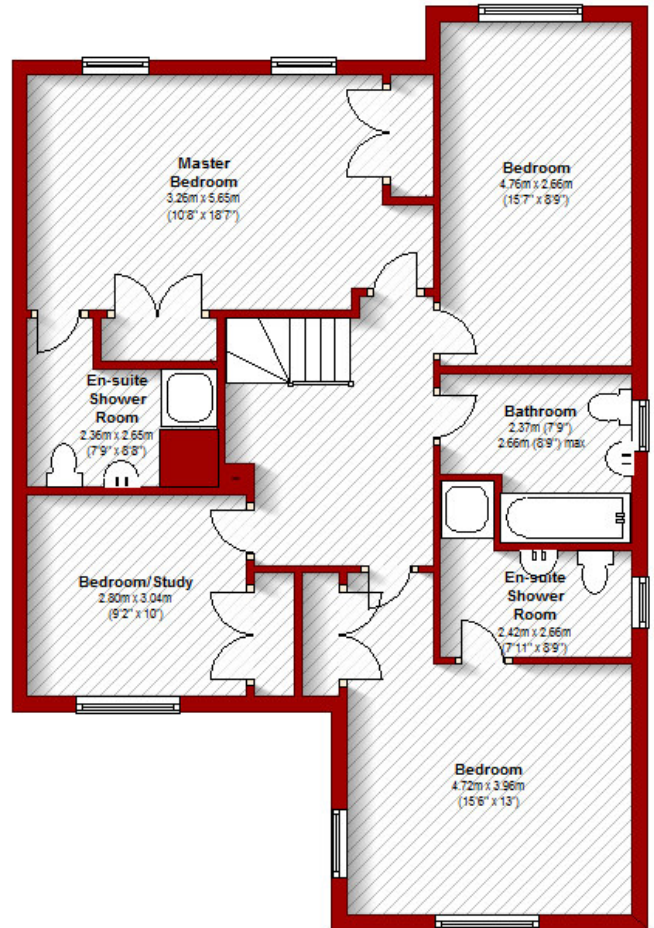
Ground Floor

Approx. 86.7 sq. metres (933.6 sq. feet)



First Floor

Approx. 82.1 sq. metres (883.3 sq. feet)



Total area: approx. 168.8 sq. metres (1816.9 sq. feet)

The above particulars are for guidance only, no liability for any errors or omissions will be accepted by Aberdeen Property Leasing Ltd.