



Cornpoppy Avenue, Offers in Excess of £250,000

- Enjoying cul-de-sac setting
- Attractive rear garden
- Convenient Garage
- Great design for young family
- Edge of Town
- EPC Rating: C



3 1 1



About the property

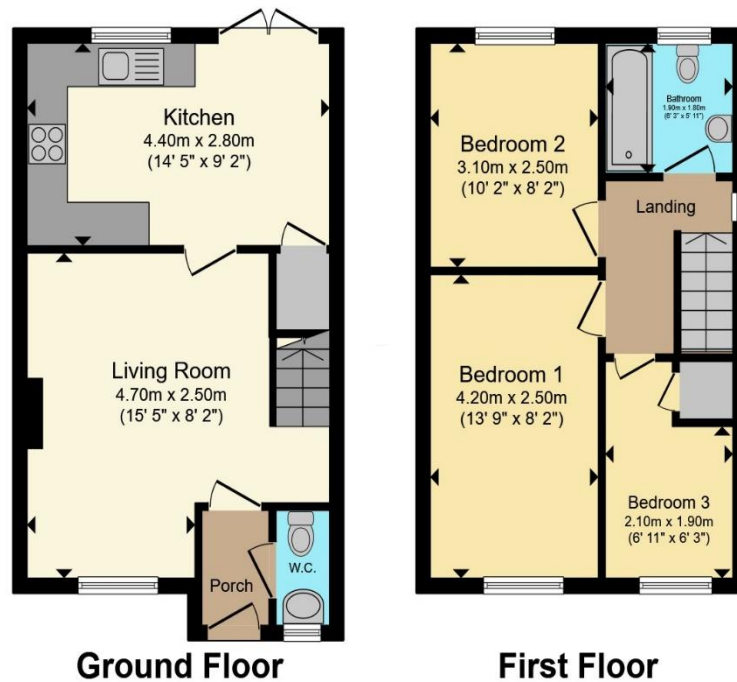
Pleasantly situated within popular avenue, with garage set immediately opposite for convenience. Open plan Kitchen/Diner with French doors leading out to attractive enclosed lawned garden to rear aspect.

The well proportioned accommodation comprises; Entrance Hall, with door to Cloakroom/WC. Sizeable Sitting Room with window to front, laminate flooring, feature ornamental fireplace. Door through in to modern fitted Kitchen combined with Dining Area, ideal open plan family arrangement benefitting from French doors opening out to the attractive rear garden. A staircase leads from the Sitting Room to the First Floor, where there is a modern Bathroom and three Bedrooms, the primary Bedroom enjoys distant views beyond the residential area across to the edge of countryside. Outside a particular feature of the property is the garage, with space in front, conveniently set just the otherside of the front garden. The rear garden is pleasantly enclosed, enjoying a paved terraced and lawned area beyond with planted shrubs.





Floorplan



Total floor area 67.8 m² (730 sq.ft.) approx

This floor plan is for illustrative purposes only. It is not drawn to scale. Any measurements, floor areas (including any total floor area), openings and orientation are approximate. No details are guaranteed, they cannot be relied upon for any purpose and they do not form part of any agreement. No liability is taken for any error, omission or misstatement. A party must rely upon its own inspection(s). Powered by www.propertybox.io



Important Information

Note while we endeavour to make our sales details accurate and reliable, if there is any point which is of particular interest to you, please contact the office and we will be pleased to confirm the position for you. We have not personally tested any apparatus, equipment, fixtures, fittings or services and cannot verify they are in working order or fit for their purposes. Nothing in these particulars is intended to indicate that carpets or curtains, furnishings or fittings, electrical goods (whether wired or not). Gas fires or light fittings or any other fixtures not expressly included form part of the property offered for sale. This computer generated Floorplan, if applicable, is intended as a general guide to the layout and design of the property. It is not to scale and should not be relied upon for dimensions. Tenure: We cannot confirm the tenure of the property as we have not had access to the legal documents. The buyer is advised to obtain verification from their solicitor or surveyor.

Peter Alan Limited is registered in England and Wales under company number 2073153, Registered Office is Cumbria House, 16-20 Hockliffe Street, Leighton Buzzard, Bedfordshire, LU7 1GN. VAT Registration Number is 500 2481 05. For activities relating to regulated mortgages and non-investment insurance contracts, Peter Alan Limited is an appointed representative of Connells Limited which is authorised and regulated by the Financial Conduct Authority. Connells Limited's Financial Services Register number is 302221. Most buy-to-let

