



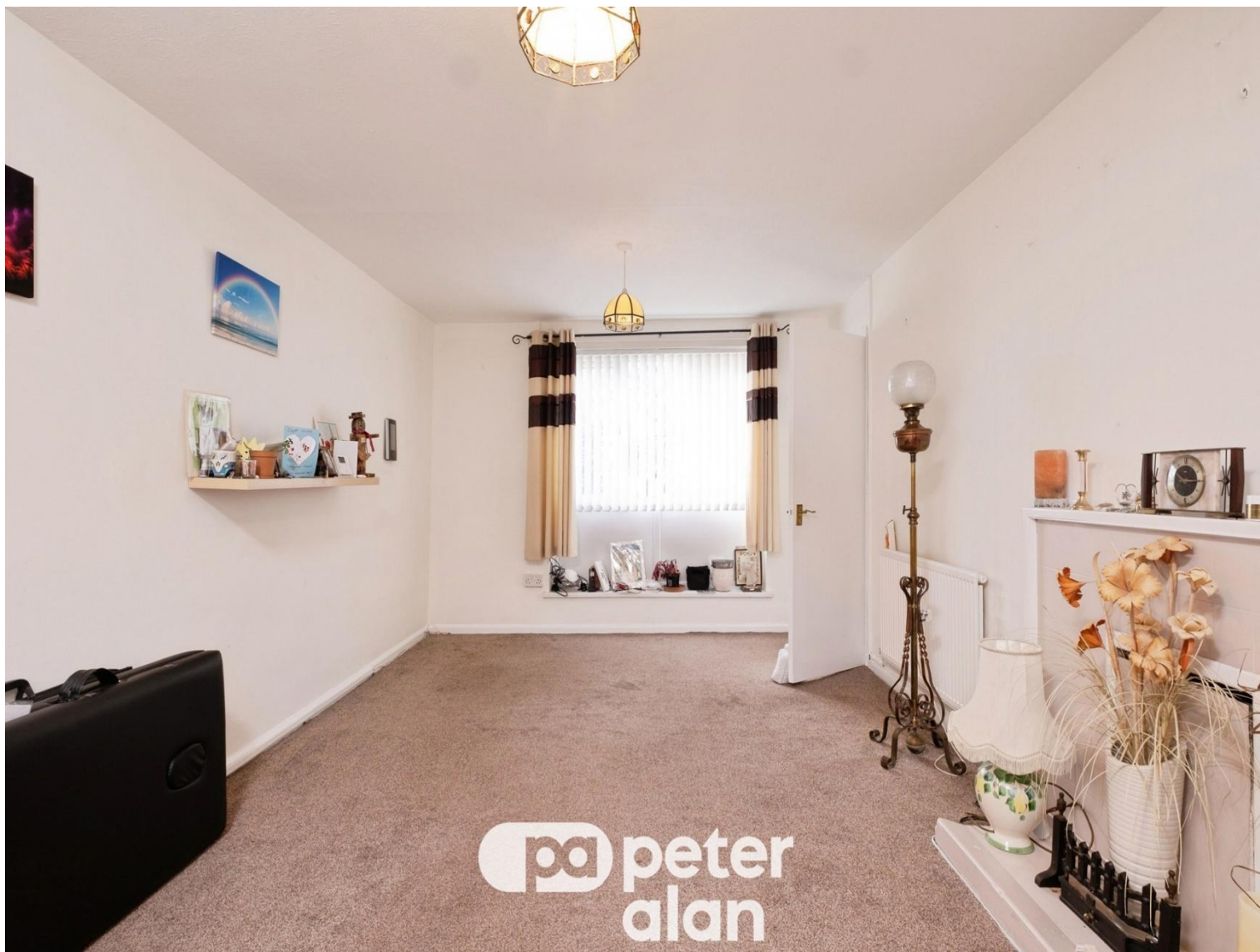
Tudor Road

£175,000

- Mid link property overlooking green
- Excellent location for primary school and shop
- Attractive rear garden
- Available with no onward chain
- EPC Rating: D



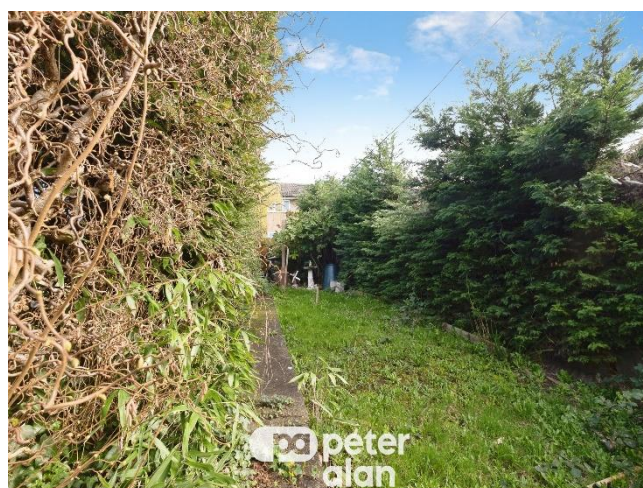
 3  1  1



About the property

Conveniently situated for the local primary school and shop. Available with no onward chain. Well proportioned accommodation. Distant views from the first floor. Garden to front and rear aspect.

Enjoying a pleasant location with first floor views beyond the area to the distant countryside. Internally the accommodation comprises; Sizeable Entrance Hall with useful cloaks storage. Doors to following; delightful Sitting Room with dual aspect. The open plan Kitchen with Dining Area is fitted with base and wall units comprising cupboards and drawers, a door provides access out to the extensive rear enclosed garden. On the first floor there are three Bedrooms and a Bathroom which requires updating. Outside there is a front garden which overlooks the open green. With a pleasant rear garden providing sizeable space, planted with a number of shrubs creating interest. There is also a useful garden store. The property is available immediately, with no onward chain.

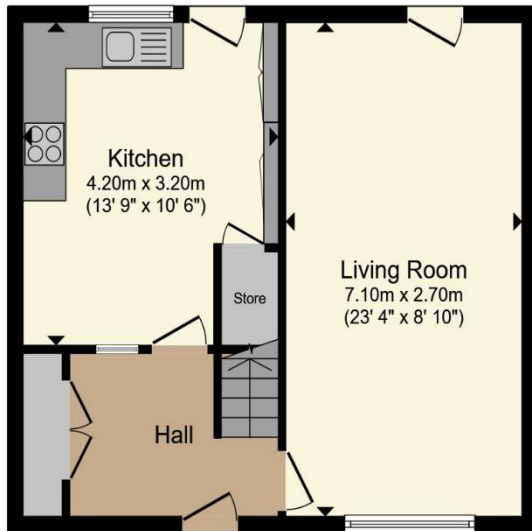




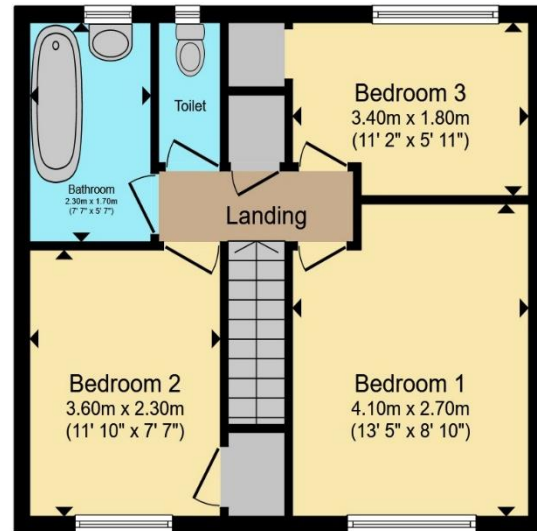
01600 714355

monmouth@pablack.co.uk

Floorplan



Ground Floor



First Floor

Total floor area 89.6 m² (964 sq.ft.) approx

This floor plan is for illustrative purposes only. It is not drawn to scale. Any measurements, floor areas (including any total floor area), openings and orientation are approximate. No details are guaranteed, they cannot be relied upon for any purpose and they do not form part of any agreement. No liability is taken for any error, omission or misstatement. A party must rely upon its own inspection(s). Powered by www.propertybox.io

Important Information

Note while we endeavour to make our sales details accurate and reliable, if there is any point which is of particular interest to you, please contact the office and we will be pleased to confirm the position for you. We have not personally tested any apparatus, equipment, fixtures, fittings or services and cannot verify they are in working order or fit for their purposes. Nothing in these particulars is intended to indicate that carpets or curtains, furnishings or fittings, electrical goods (whether wired or not), Gas fires or light fittings or any other fixtures not expressly included form part of the property offered for sale. This computer generated Floorplan, if applicable, is intended as a general guide to the layout and design of the property. It is not to scale and should not be relied upon for dimensions. Tenure: We cannot confirm the tenure of the property as we have not had access to the legal documents. The buyer is advised to obtain verification from their solicitor or surveyor.

Peter Alan Limited is registered in England and Wales under company number 2073153, Registered Office is Cumbria House, 16-20 Hockliffe Street, Leighton Buzzard, Bedfordshire, LU7 1GN. VAT Registration Number is 500 2481 05. For activities relating to regulated mortgages and non-investment insurance contracts, Peter Alan Limited is an appointed representative of Connells Limited which is authorised and regulated by the Financial Conduct Authority. Connells Limited's Financial Services Register number is 302221. Most buy-to-let