



Northway Road | London | SE5 9AN

Freehold

£1,150,000

- Four double bedrooms
- Two bathrooms
- Large kitchen
- Original features
- South facing garden
- Ruskin Park
- Denmark Hill Station
- Loughborough Junction
- Excellent bus routes
- Brixton

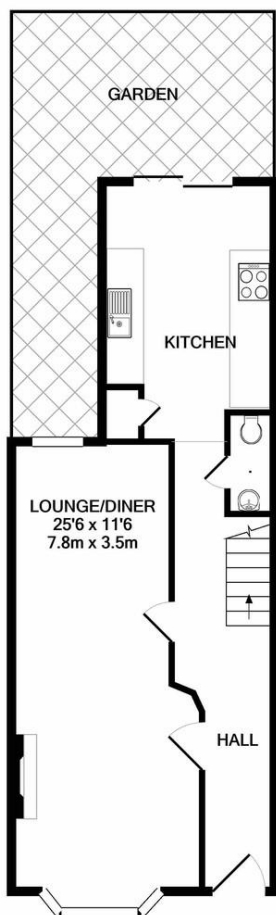


This attractive Victorian terraced house has been thoughtfully extended and is presented in excellent condition throughout. The ground floor includes a spacious kitchen and dining area, a double reception room, a WC and access to a charming rear garden.

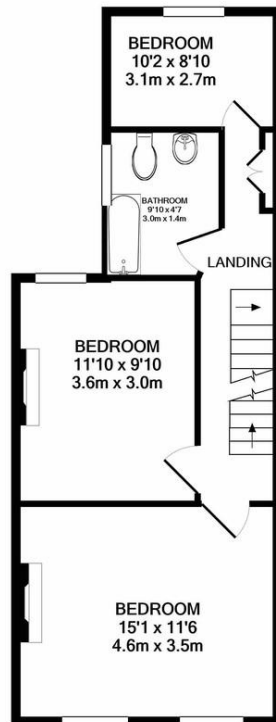
On the first floor there are three bedrooms and a family bathroom, while the converted loft provides a main bedroom with its own en-suite bathroom. Transport connections are excellent, with stations at Denmark Hill railway station and Loughborough Junction railway station providing regular services into central London and beyond. Brixton Underground station is also nearby, offering quick access to the West End, Victoria and King's Cross.



Score	Energy rating	Current	Potential
92+	A		
81-91	B		
69-80	C		76 C
55-68	D	61 D	
39-54	E		
21-38	F		
1-20	G		



GROUND FLOOR
APPROX. FLOOR
AREA 442 SQ.FT.
(41.1 SQ.M.)

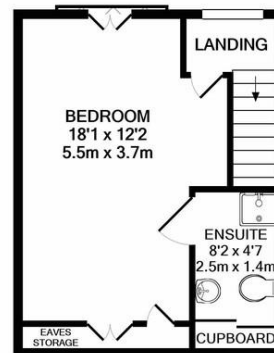


1ST FLOOR
APPROX. FLOOR
AREA 433 SQ.FT.
(40.2 SQ.M.)

TOTAL APPROX. FLOOR AREA 1114 SQ.FT. (103.5 SQ.M.)

Whilst every attempt has been made to ensure the accuracy of the floor plan contained here, measurements of doors, windows, rooms and any other items are approximate and no responsibility is taken for any error, omission, or mis-statement. This plan is for illustrative purposes only and should be used as such by any prospective purchaser. The services, systems and appliances shown have not been tested and no guarantee as to their operability or efficiency can be given

Made with Metropix ©2019



2ND FLOOR
APPROX. FLOOR
AREA 239 SQ.FT.
(22.2 SQ.M.)

Viewing Arrangements

Strictly by appointment

Contact Details

121 Denmark Hill

London

SE5 8EN

www.urbanvillagehomes.co.uk

sales@urbanvillagehomes.com

020 3519 9121

Agents Note: Whilst every care has been taken to prepare these sales particulars, they are for guidance purposes only. All measurements are approximate and for general guidance purposes only and whilst every care has been taken to ensure their accuracy, they should not be relied upon and potential buyers are advised to recheck the measurements