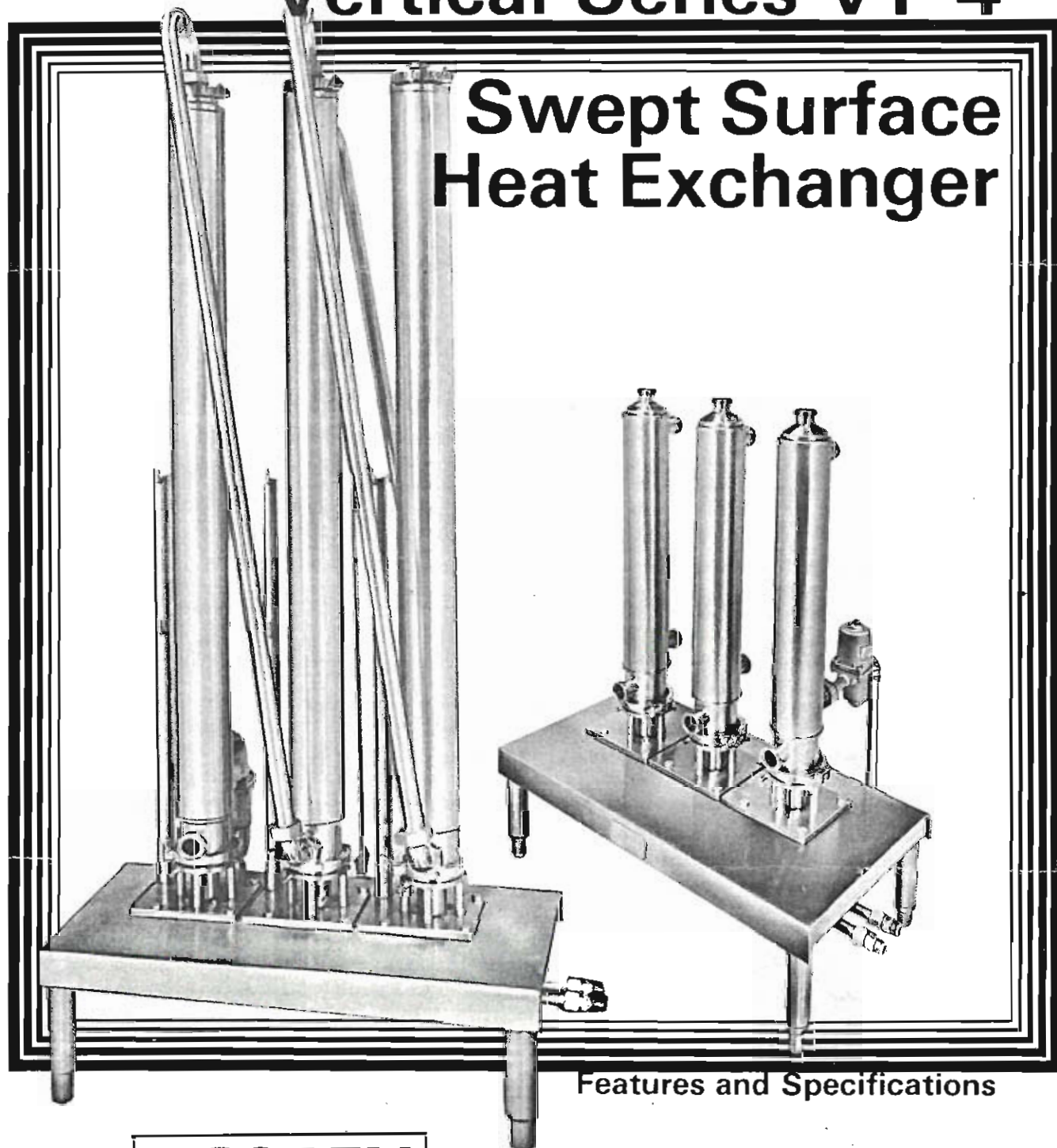


# CREPACO

## Vertical Series VT-4

### Swept Surface Heat Exchanger



Features and Specifications

 **SOREN**

**SOREN S.R.L.**

Via Pacinotti, 29

20094 CORSICO (MI) - Italy

tel. 02/4408303 - fax 316585 SOREN I

**CREPACO**

FOOD EQUIPMENT AND REFRIGERATION

AN  COMPANY

## BASIC UNIT

Includes base 4" (100mm) diameter vertical tubes, all metal product contact areas are 316 stainless steel with #4 finish and metal non-product contact areas are 304 stainless steel with electro finish.

## CAPACITY

Varies with product temperature and duty.

## BASE

304 stainless steel with adjustable ball feet.

## CYLINDERS

Vertically mounted on base and are operated in modules of one, two, three, or four per common base. Each cylinder is readily assembled or disassembled without special tools or hoists. Cylinder media jackets are available for steam or liquid.

## DASHERS

The displacement type dashers are fabricated of 316 stainless steel and supplied in two diameters -- 1½" (38mm) diameter which provides for an annular spacing of 1-3/16" (30mm) and a 2⅞"

(73mm) diameter which provides for an annular space of ½" (13mm). An internal Clean-In-Place bearing guides the upper end of the dasher.

## SEALS

Positive Driven Rotary Type is provided at the drive end of the dasher. It can be water flushed or aseptic.

## BLADES

Plastic laminate or molded plastic.

## MEDIA

Water or steam may be utilized for heating product with steam traps furnished for steam units. Cooling medias can be water or glycol. (Salt brines are not recommended.)

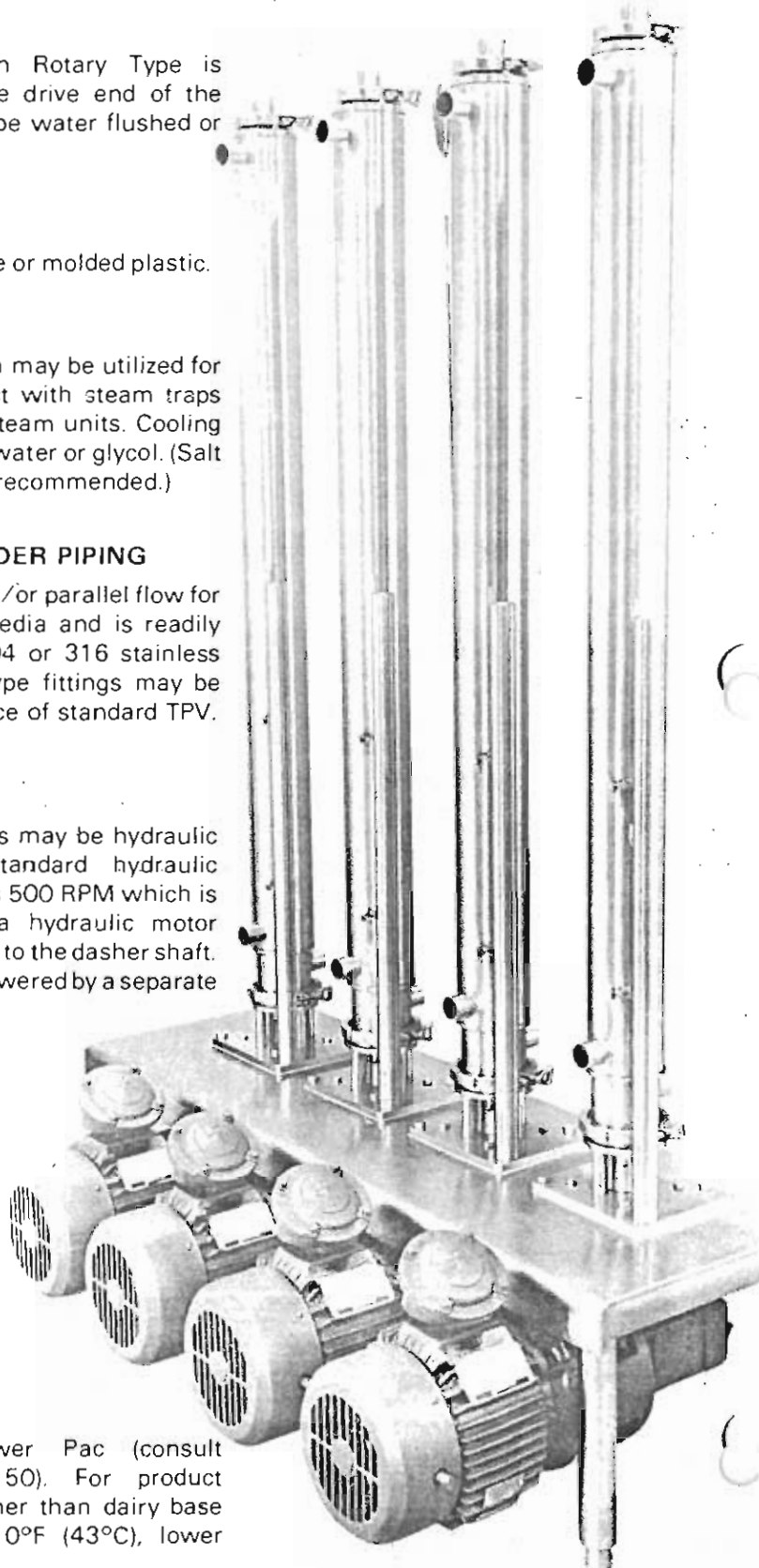
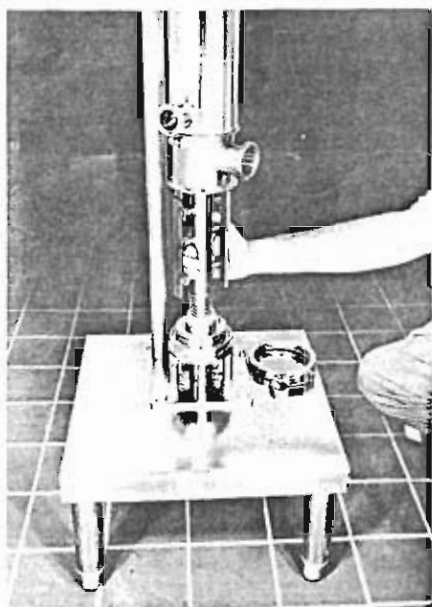
## INTER-CYLINDER PIPING

Series flow and/or parallel flow for product and media and is readily available in 304 or 316 stainless steel. Clamp type fittings may be provided in place of standard TPV.

## DRIVES

Individual drives may be hydraulic or electric. Standard hydraulic dasher speed is 500 RPM which is developed by a hydraulic motor directly coupled to the dasher shaft. This motor is powered by a separate

dasher speeds may be required. By selection of the proper Hydraulic Power Pac, various constant dasher speeds may be obtained. When hydraulic fluid is directed through



Hydraulic Power Pac (consult Bulletin Y-6-150). For product viscosities higher than dairy base pudding at 110°F (43°C), lower

the motors in series up to a maximum of four, pressure is accumulated, but the GPM flow of fluid required is constant regardless of the number of tubes. When the hydraulic fluid is directed in parallel to the individual drive motors, the capacity of fluid required is accumulative and the pressure remains constant.

Variable speeds are possible and would require either a variable volume pump or flow controls and fixed volume pump. Where two, three, or four tubes are mounted on a common base, the inter-connecting hydraulic tubing is furnished for the drive motors.

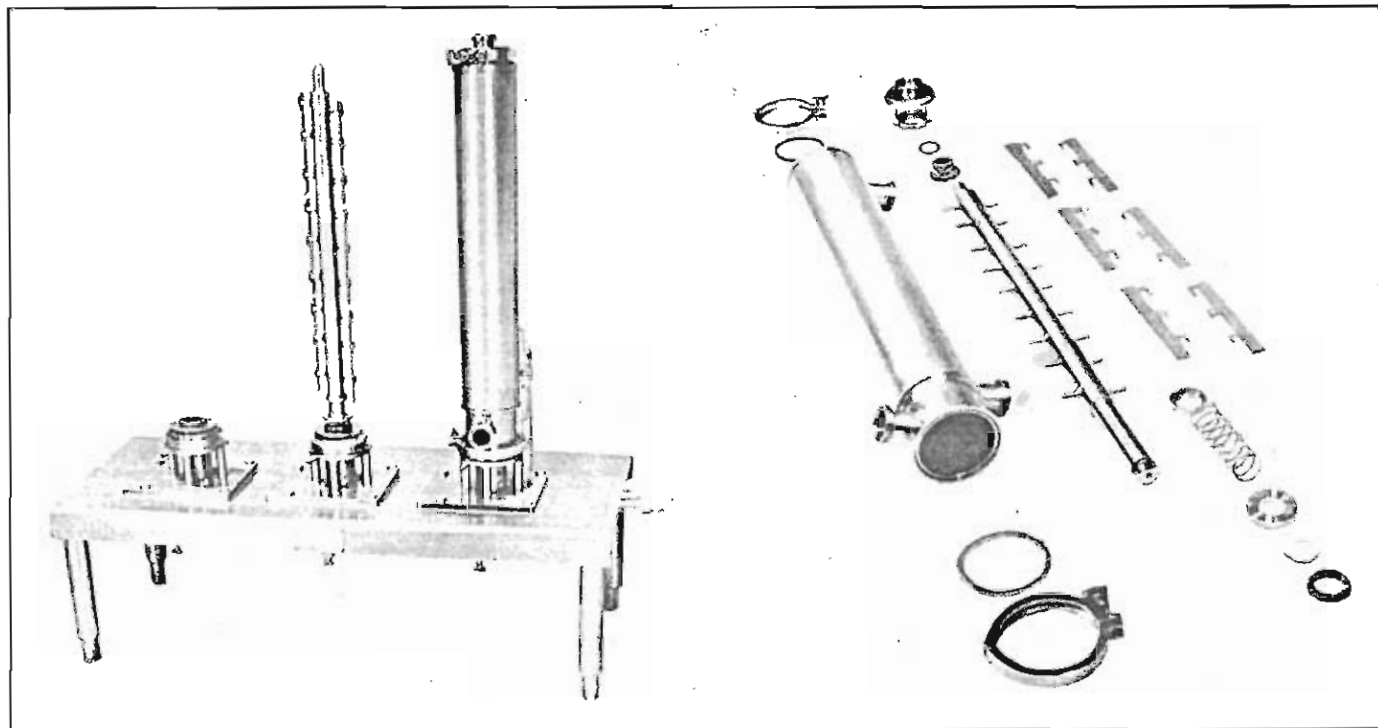
Constant speed electric gear-head motor drives can be fitted in place of the hydraulic motors up to a maximum of four per common base. Dasher speeds of 175, 230, 290 or 350 RPM are available with 60Hz operation, dasher speeds are 145, 195, 245 or 295 RPM operating at 50 Hz.

## GENERAL SPECIFICATIONS

SPECIFICATIONS	VT-422	VT-460
Maximum Product Working Pressure	100 PSIG 7 kg/cm <sup>2</sup>	100 PSIG 7 kg/cm <sup>2</sup>
Maximum Steam Media Pressure	75 PSIG 5.25 kg/cm <sup>2</sup>	75 PSIG 5.25 kg/cm <sup>2</sup>
Maximum Liquid Media Pressure	75 PSIG 5.25 kg/cm <sup>2</sup>	75 PSIG 5.25 kg/cm <sup>2</sup>
Maximum Product Temperature	300 F. 149 C.	300 F. 149 C.
Standard Product Inlet-Outlet Size	1½" TPV 38mm	1½" TPV 38mm
Optional Product Inlet-Outlet Size	2" TPV 51mm	2" TPV 51mm
Media Inlet/Outlet Size	1½" TPV 38mm	1½" TPV 38mm
Media Flow Per Cylinder	10 GPM 38 LPM	25 GPM 95 LPM
Heat Exchange Surface Per Cylinder	1.75 sq. ft. 0.16 sq. m.	5.0 sq. ft. 0.46 sq. m.
Product Capacity Per Hour Per Cylinder	300-600 lbs. 136-273 kg.	1000-2000 lbs. 454-908 kg.
Product Capacity Per Hour Per Multi-cylinder Units in Series	2400-2600 lbs. 1090-1182 kg.	8000-9000 lbs. 3629-4082 kg.

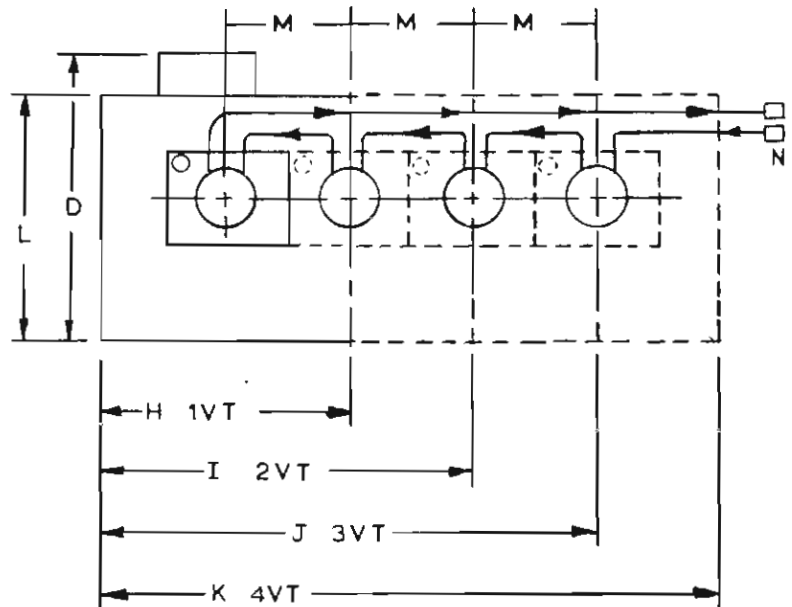
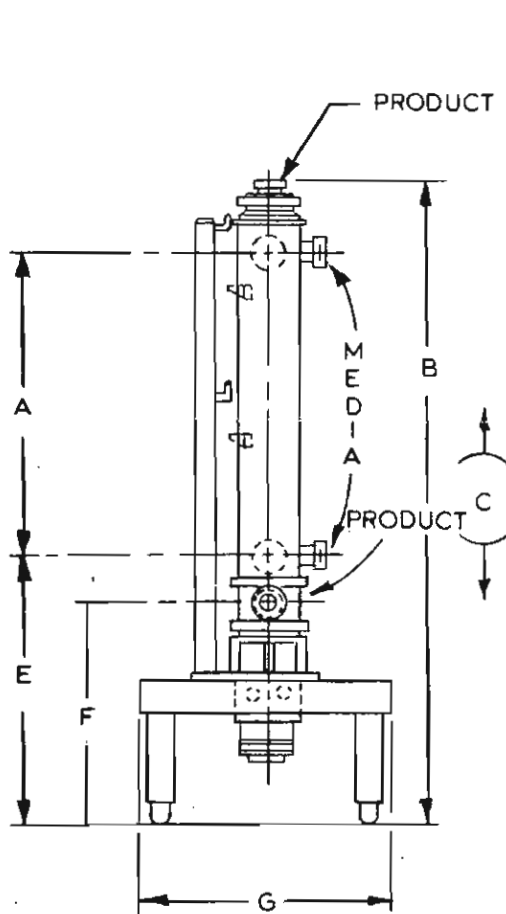
Water Holding Capacity Per Cylinder	15	9.5 lbs. 4.5 kg.	20 lbs. 9.2 kg.
	Dasher 30	4.3 lbs. 1.9 kg.	10.4 lbs. 4.7 kg.

*Disassembled view of VT-422 unit illustrating simplicity of basic design and construction. While simple to take-down for maintenance and cleaning, unit is designed to be cleaned-in-place. VT-460 is identical in construction except for variables as shown on dimensional drawing.*



# CP VERTICAL SERIES (VT-4) SWEEP SURFACE HEAT EXCHANGERS

## DIMENSIONS



C = Height required for cylinder and dasher removal

NOTE: Cylinder rest stand not furnished with Model VT-422

Model	VT-422	VT-460	Model	VT-422	VT-460
A	22-5/8	53-7/8	H	20	
	575	1368		508±19	
B	50±½	81¼±½	I	32	
	1270±19	2064±19		813	
C	60	90	J	44	
	1524	2286		1118	
D*	20-7/16	23	K	56	
	519	584		1422	
E	23±½		L**	18-3/8	
	584±19			467	
F	20±½		M	12	
	508±19			305	
G	20				
	508±19				

NOTE: Top line inches -- bottom line millimeters

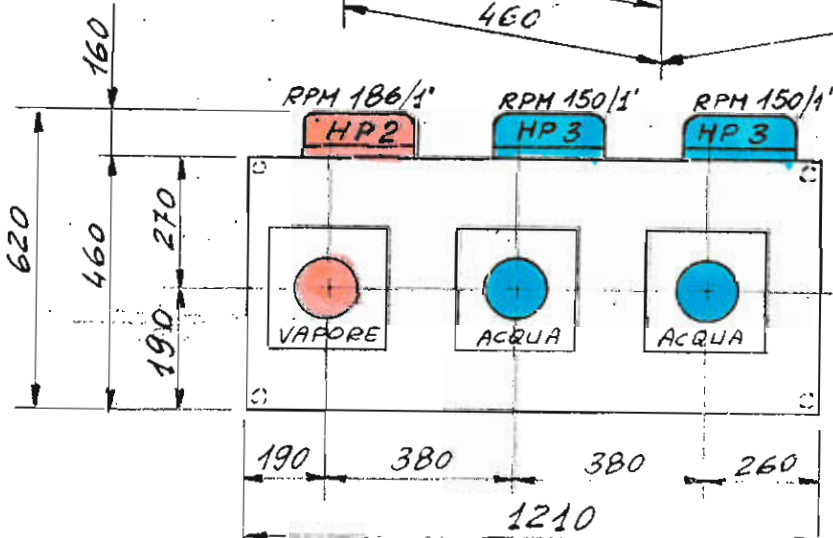
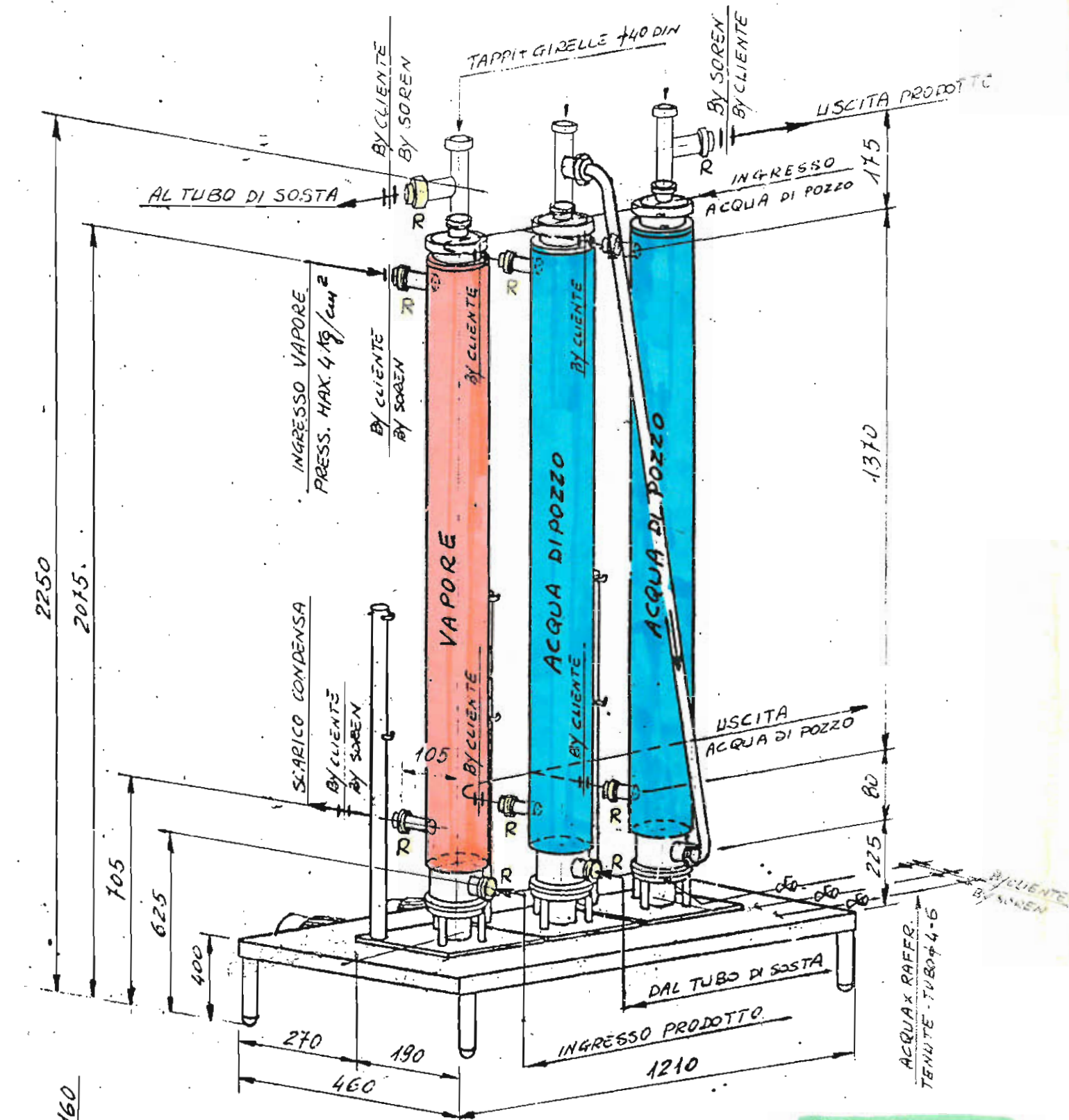
## HYDRAULIC DASHER DRIVE POWER-PAC REQUIREMENTS

MODEL	VT-422				VT-460			
No. of Cylinders	(N) 1	(N) 2	3	4	(N) 1	(N) 2	3	4
Capacity Fluid GPM	11	11	11	11	11	11	11	11
LPM	40	40	40	40	40	40	40	40
Fluid Pressure PSIG	300	600	900	1200	400	800	1200	1600
kg/cm <sup>2</sup>	21	42	63	84	28	56	84	112
* Power-Pac Motor Horse Power	2	5	7½	10	3	7½	10	15

- \* Based on fixed volume fluid pump
- (N) Single cylinder hydraulic fittings on base ½" (13mm) FPT and approximately 12" (305mm) from floor
- (N) Multiple cylinder hydraulic fittings on base ¾" (19mm) MPT and approximately 10½" (267mm) from floor

Prices and Specifications subject to change without notice





VISTA IN PIANTA

OGGETTO: 3VT460S-W-W

CLIENTE: LINEA GEL ITALIANA

DATA: 18-12-85 SCALA: 1

"R" = RACCORDO COMPLETO 40 DIN



SOREN s.n.c.  
Via Pacinotti, 29  
20094 CORSICO (MI) - Italy  
tel. 02/4408303 - tlx 316585 SOREN I

Mod. S 69