

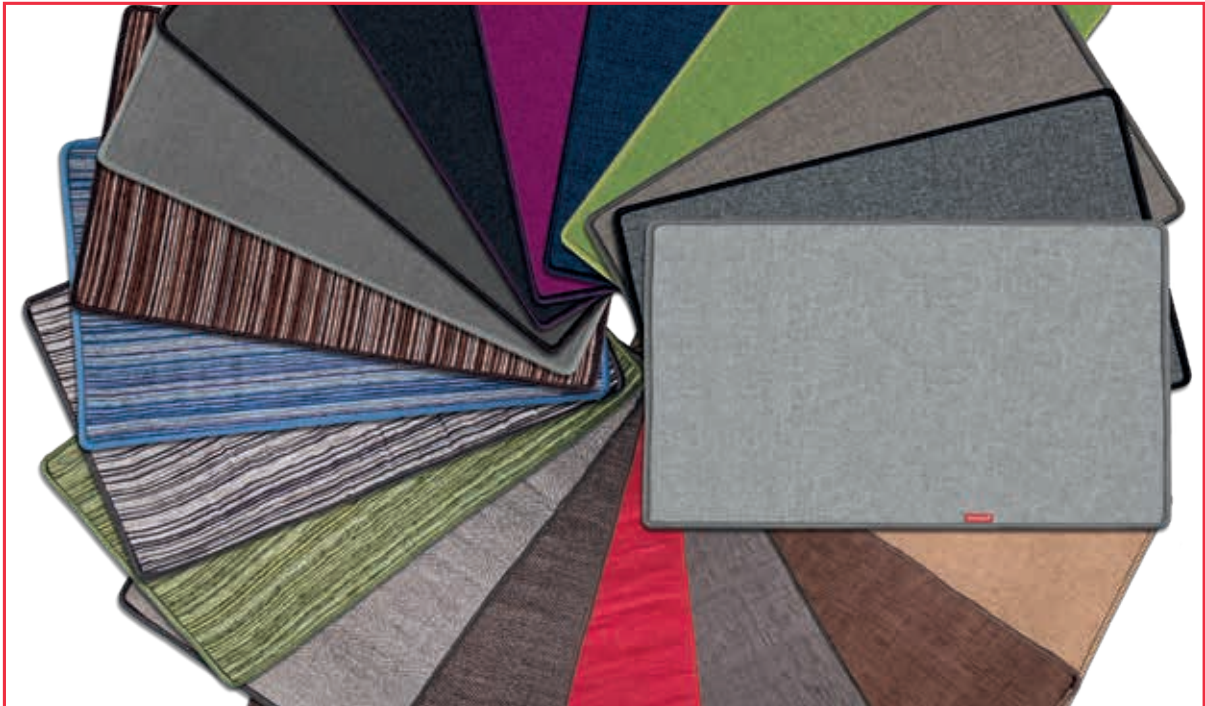
# *TECHNICAL DATA SHEET* **HEATING CARPETS**



## **Index**

Product breakdown .....	2
Dimensions and characteristics .....	3
Colors .....	4

## HEATING CARPETS



The **Warmset Heating Carpet** is the ideal system for guaranteeing great **comfort** of feet and legs in those situations when you have to stay sitting down for hours in the same position **at home** or especially **in the office**. The Warmset heating carpet is great if placed under your desk, especially for those who sit in front of the computer for hours, constantly annoyed because they feel cold.

Thanks to Warmset's **innovative heating system**, its **not** being **very thick** and the **care invested in the fabrics** and stitches, the carpet combines **technology**, **comfort** and **design**.

Just a few minutes after it is turned on, plugged in to any electrical outlet, and consuming the power of a lamp, the Warmset carpet gives its user a pleasurable **sense of well-being** to the feet, legs and the entire body.

For the project, Warmset worked together with architect Ferruccio Tassinato on the design and finishes of the Heating Carpet. The finished product comes in its standard dimensions of 75x50 cm in different colors. The clear plug also used for designer lamps makes this carpet a real and genuine **Italian designer item all-around**.

# DIMENSIONS AND CHARACTERISTICS

## HEATING CARPETS

### Physical Characteristics

The Warmset Heating Carpet is a heating carpet suitable for the heating and comfort of the lower limbs, available in **5 fabric ranges**: Chenille, Danae, Fire-retardant Fashion, Fire-retardant Melange, and Fire-retardant Wool.

It is a **multi-layer system** inside which there is Warmset heating technology laid on insulating backing. On the outside, there is fabric at the top of the carpet and **anti-slip PVC** underneath.

### Technical Characteristics

MODEL	DIMENSIONS	POWER
STANDARD	75 X 50 CM	100 W
PERSONALIZED SIZES	150-800 X 50 CM	100 W

The electric Warmset Heating Carpet comes in the **standard size** of 75x50 cm with 100 W power, or in **personalized sizes** based on a design up to 1.5 m in width and 8 m in length.

The heating technology inside is the soul of the entire carpet and thanks to its **patented shape** plenty of heat is given off over the entire surface.

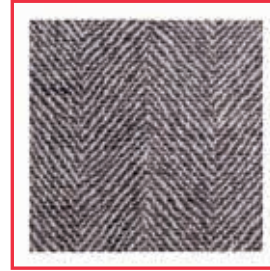
The insulation underneath increases the product's efficiency, conveying the heat upwards, thus keeping it from going downwards.

There is a **thermal protector** set at 50 °C in the carpet which turns off the system in case of accidental overheating due to the system being used improperly.

The cables are IPX7 guaranteed. The cold output cable has a bipolar plug in compliance with European standards and a **pedal switch with LED light** to signal startup and shutdown of the system.

# **COLORS** *HEATING CARPETS*

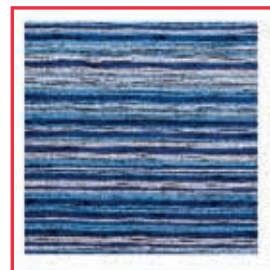
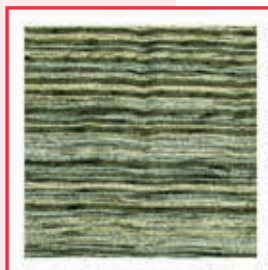
## ***Fashion Fireproof Line***



## ***Danae Line***



## ***Chenille Line***

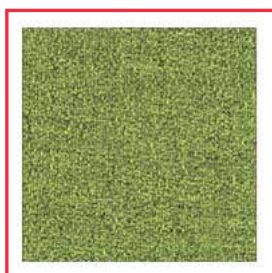
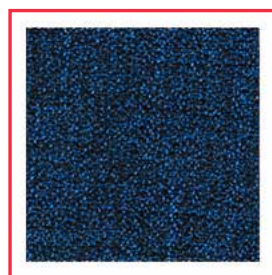
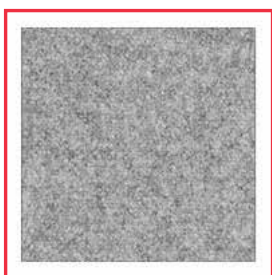


***NEW***

# **COLORS** *HEATING CARPETS*

**NEW FOR 2018**

## ***Fire-retardant melange line***



## ***Fire-retardant wool line***

