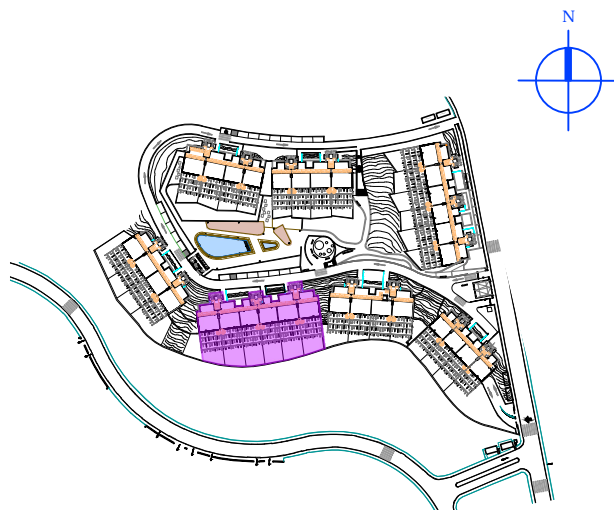
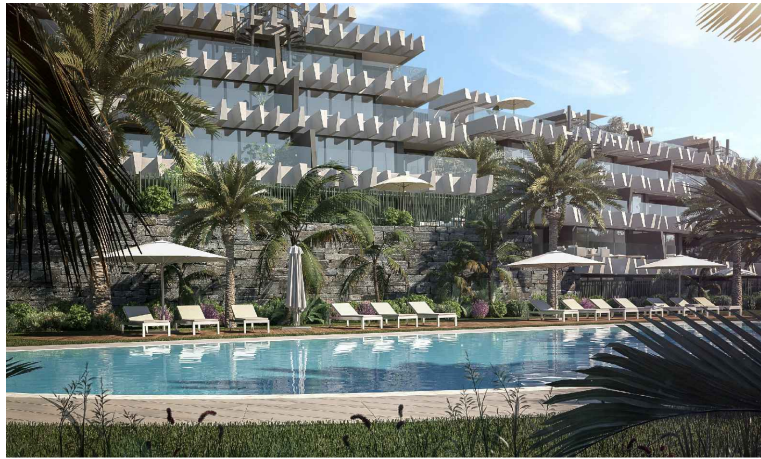
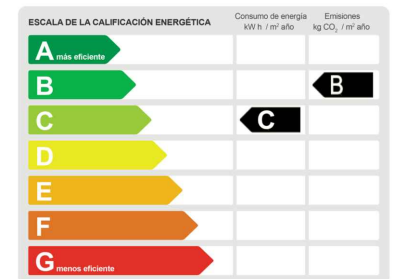
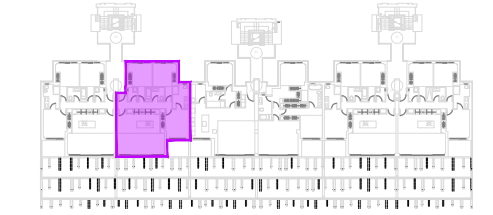
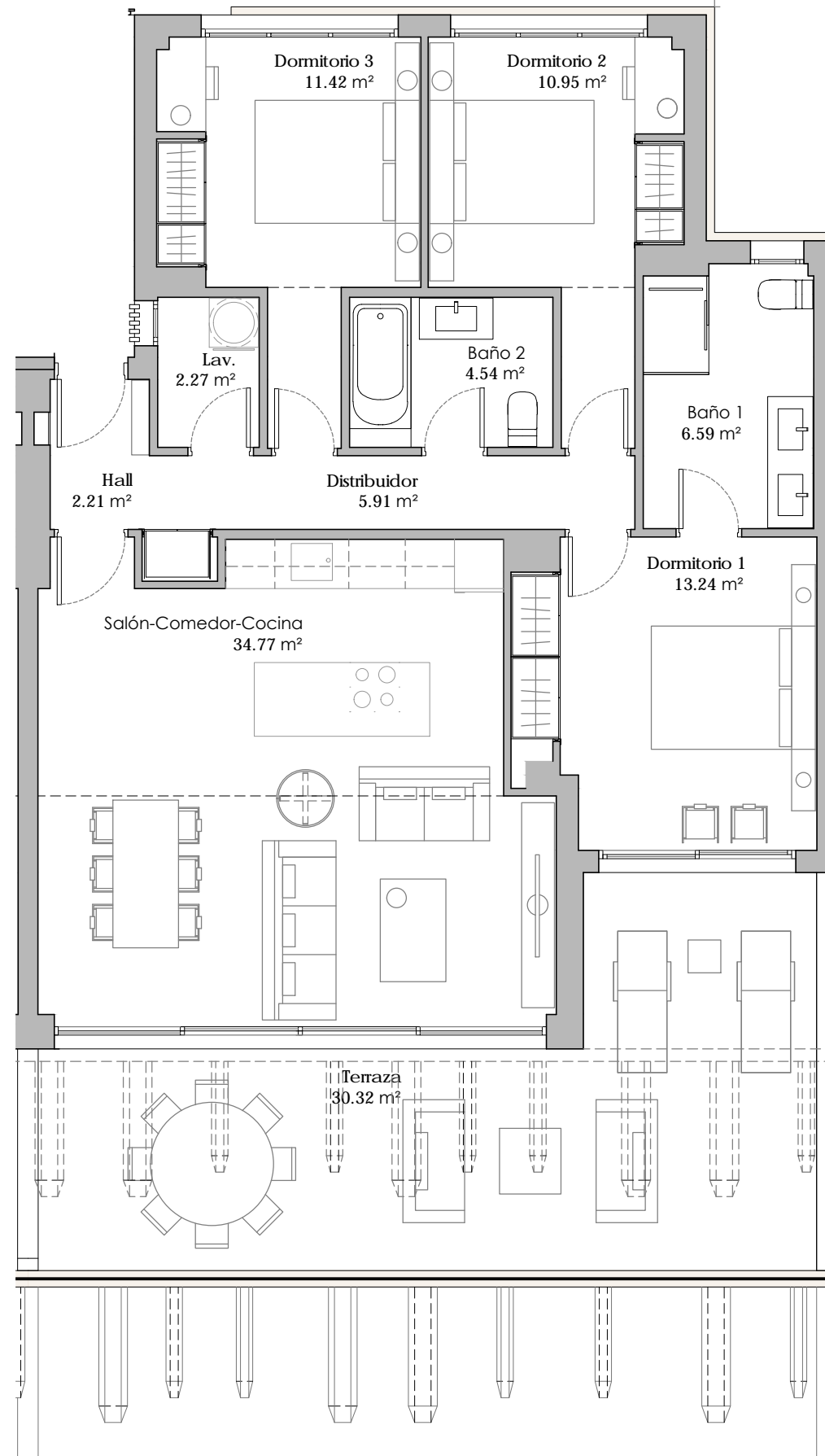


Bloque 5 Esc.3 Pl. 1 Puerta I.



Superficies Aproximadas:

Superficie Util	91.90 m ²
Superficie Terraza	30.32 m ²
Superficie Construida <small>(Incluye la p.p. de Zonas Comunes).</small>	124.65 m ²
Superficie Construida R.D.	137.11 m ²
Superficie Util R.D.	101.09 m ²



Escala Gráfica

