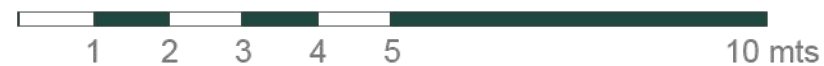
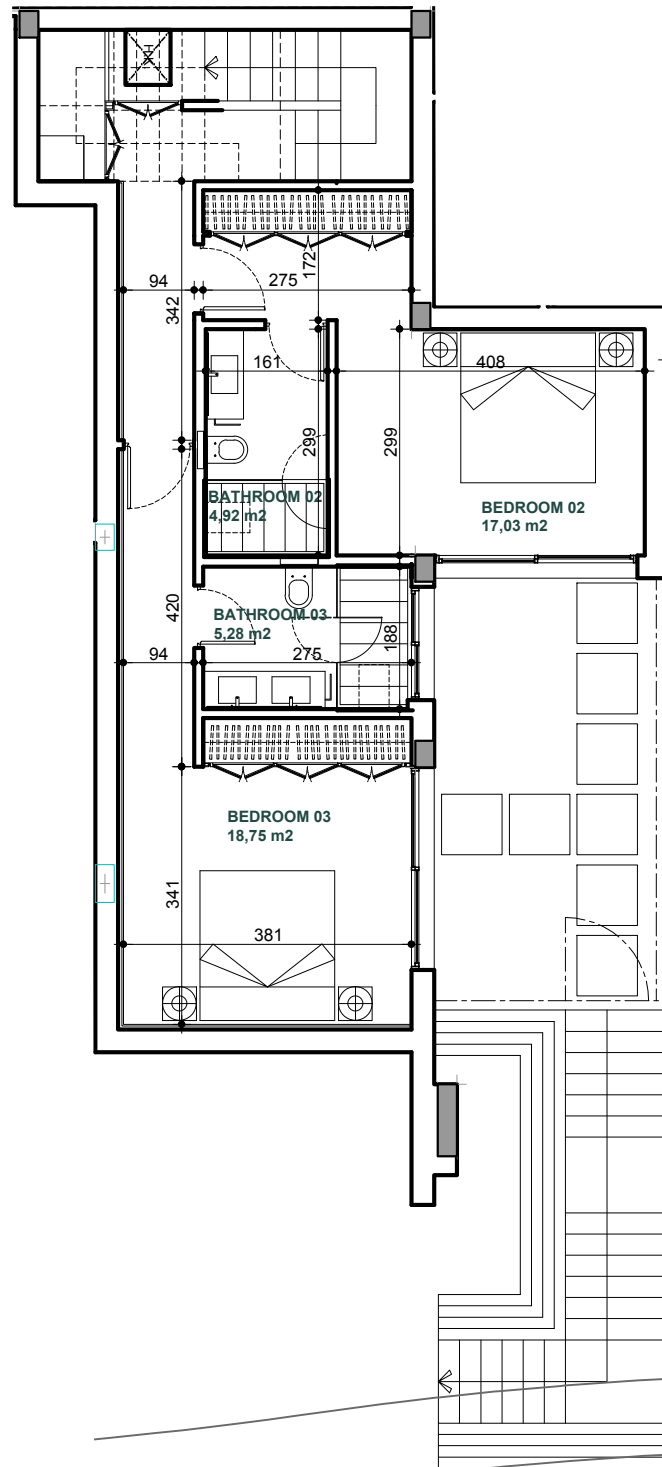


This document is for information only. The areas and measurements shown are approximate and may be modified for technical reasons and/or administrative issues. All furniture shown is for illustrative purposes.

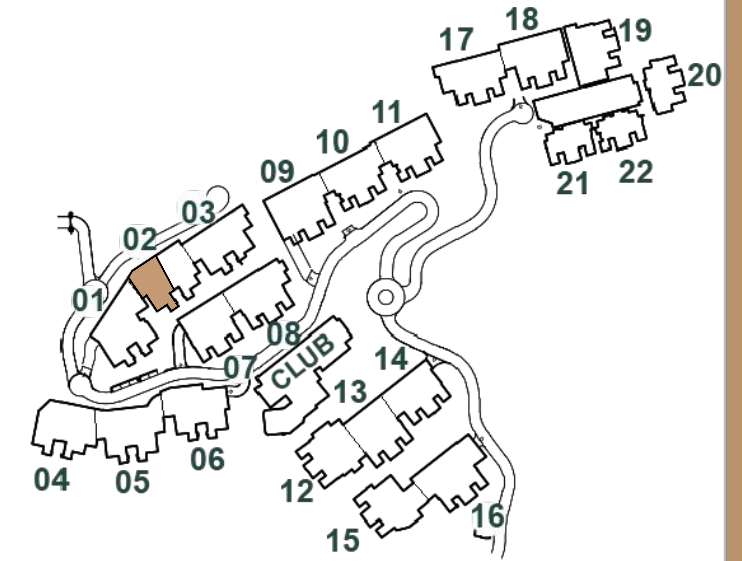


**APARTMENT 2.0.A**  
**LOWER LEVEL**  
**3 BEDROOMS**

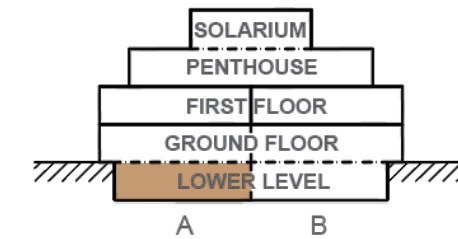


E: 1/100

**Site Plan**



**Block 02**



**Apartment 2.0.A**

Apartment area	136.42 m <sup>2</sup>
Terrace	56.48 m <sup>2</sup>
Extra area	46.98 m <sup>2</sup>
<b>Usable Area</b>	<b>239.88 m<sup>2</sup></b>
Apartment area	175.25 m <sup>2</sup>
Terrace	58.46 m <sup>2</sup>
Extra area	51.53 m <sup>2</sup>
<b>Constructed Area</b>	<b>285.24 m<sup>2</sup></b>
Common Area	35.90 m <sup>2</sup>
Garden	120.00 m <sup>2</sup>



BENAHAVIS

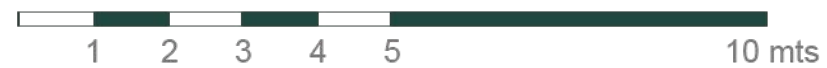
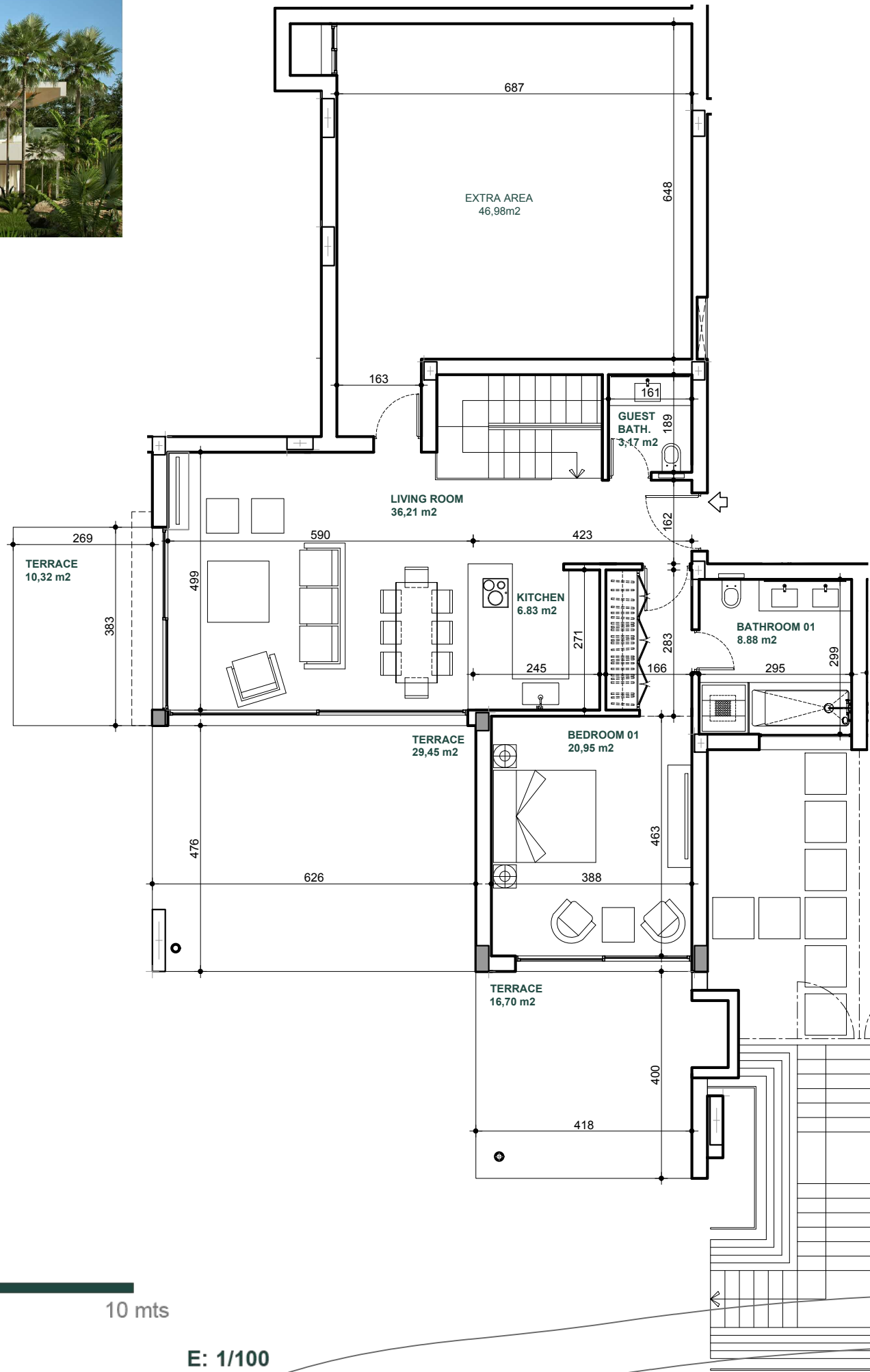
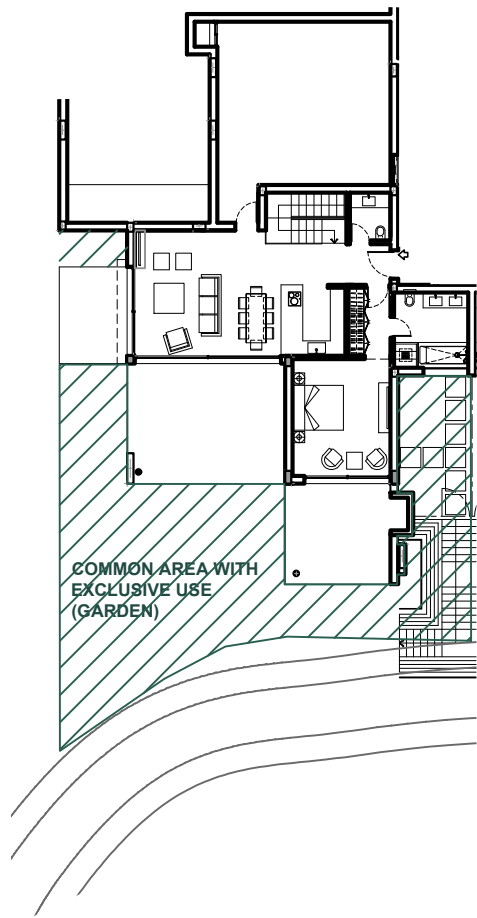
Marbella Club Hills



This document is for information only. The areas and measurements shown are approximate and may be modified for technical reasons and/or administrative issues. All furniture shown is for illustrative purposes.

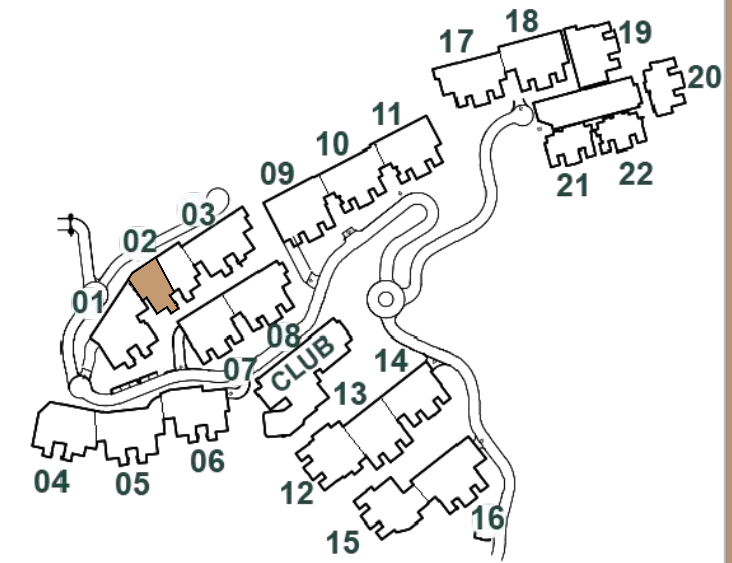


## APARTMENT 2.0.A UPPER LEVEL 3 BEDROOMS

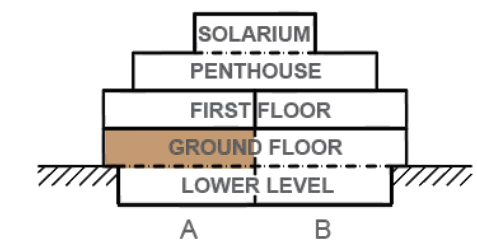


E: 1/100

## Site Plan



## Block 02



## Apartment 2.0.A

Apartment area	136.42 m <sup>2</sup>
Terrace	56.48 m <sup>2</sup>
Extra area	46.98 m <sup>2</sup>
<b>Usable Area</b>	<b>239.88 m<sup>2</sup></b>
Apartment area	175.25 m <sup>2</sup>
Terrace	58.46 m <sup>2</sup>
Extra area	51.53 m <sup>2</sup>
<b>Constructed Area</b>	<b>285.24 m<sup>2</sup></b>
Common Area	35.90 m <sup>2</sup>
Garden	120.00 m <sup>2</sup>



Marbella Club Hills · BENAHAVIS ·

