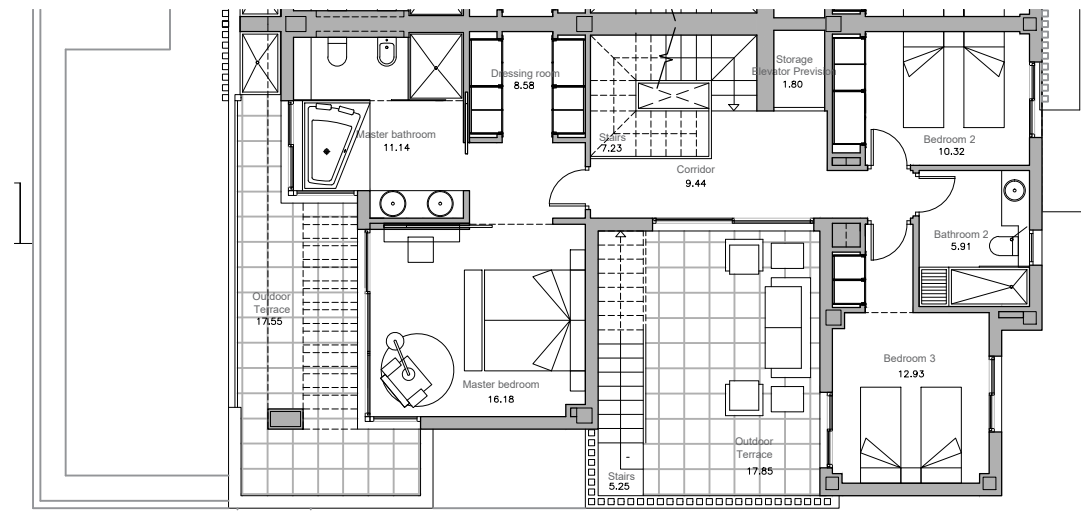
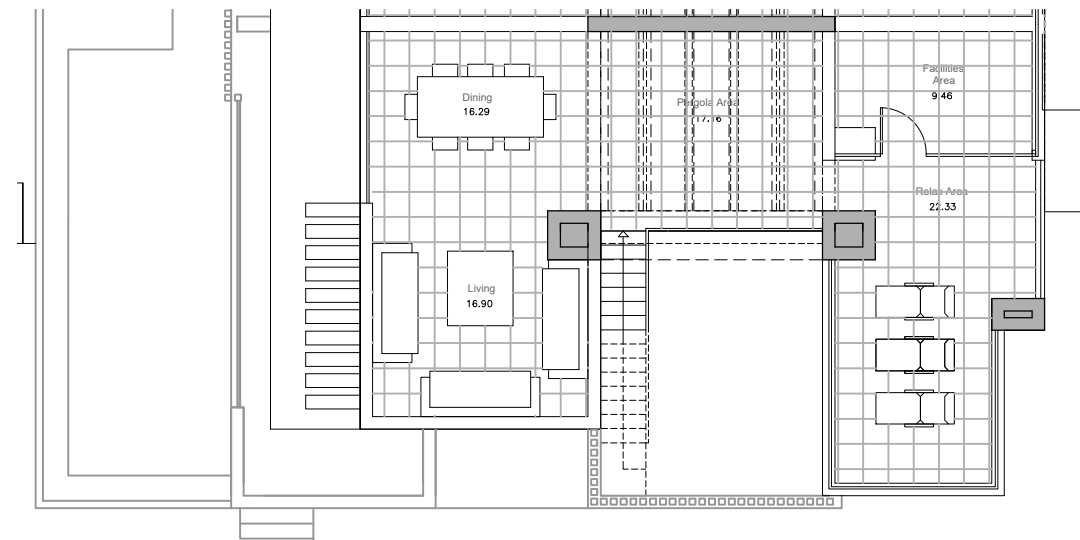


VILLA 01	
AREAS (APPROX.)	
Net Internal Area	167.01 m <sup>2</sup>
Gross External Area	220.70 m <sup>2</sup>
Total Gross Floor Area (Int + Ext)	434.04 m <sup>2</sup>
ACCORDING TO DECREE 218/2005	
Total Net Internal Area	183.71 m <sup>2</sup>
Total Gross Floor Area	264.05 m <sup>2</sup>

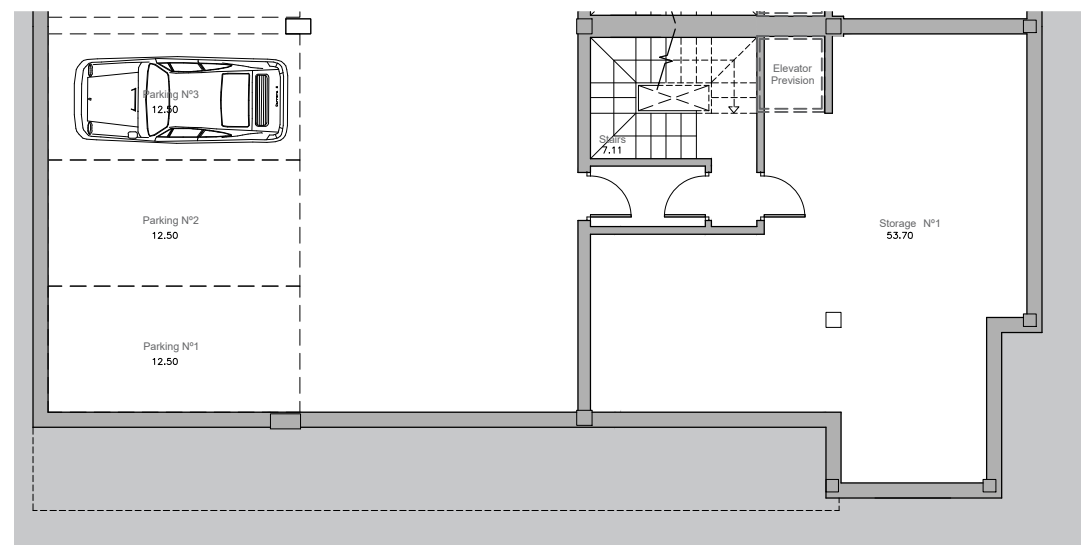
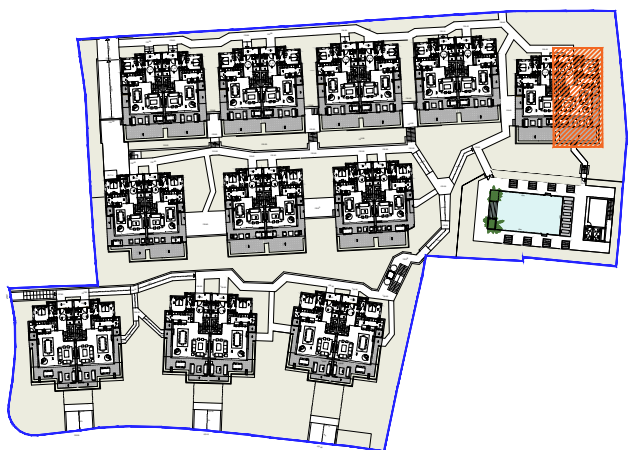


FIRST FLOOR

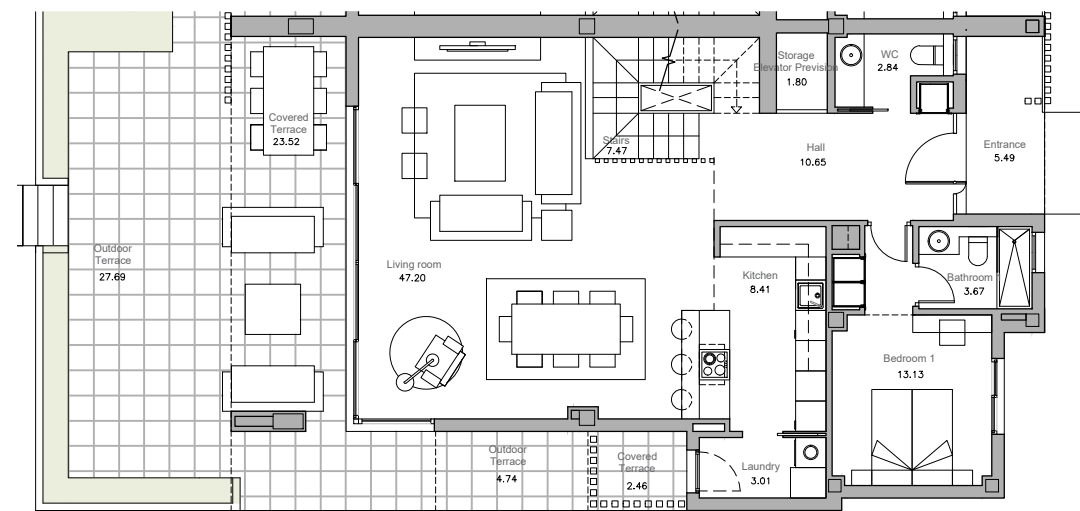


SOLARIUM

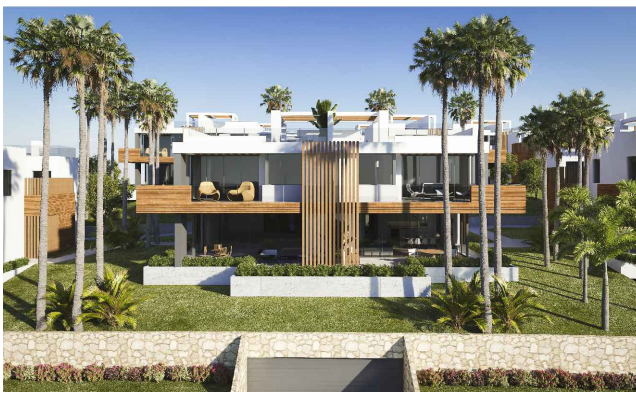
LOCATION



ANNEX



GROUND FLOOR



Managed by:

These images are not contractual but only for illustrative purposes. The images are subject to technical, legal or commercial modifications approved by the Project Management or the Competent Authority. The 3D images correspond to the façades, common elements, and the rest of the spaces are merely indicative and will be subject to verification or modification during detail design stage. The furniture of the 3D images is not included and the equipment of the villas will be indicated in the corresponding building and quality specifications. The energy certification corresponds with the one established in the project in process. All the information and documentation will be provided according to the terms established in the Decree 218/2005 and in the rest of the Regional or State regulations currently into force that could complement the mentioned Decree.