

Step lights

# THUNDER55

[arcluce-us.com](http://arcluce-us.com) 🔍 thunder



## DESCRIPTION

### Luminaire

- AISI 316L stainless steel body and trim.
- Silicone rubber gaskets.
- PMMA lenses for LEDs.
- Screen made of 3/16" thermal-shock resistant tempered glass.

### Electrical

- Nominal LED efficacy up to 162lm/W. (4000K - 350mA - CRI>70 - Tj=100°C).
- LED life time: >50000h with L80.
- High colour consistency: <3 SDCM.
- LED driver not included.

### Installation

- Supplied with power cable (10').
- Recessed installation box made of engineering plastic or of AISI 316L stainless steel.

## TECHNICAL INFORMATION

<b>Luminaire power:</b>	4W
<b>Source lumen:</b>	Up to 560lm
<b>LED:</b>	3000K - 4000K, CRI>70



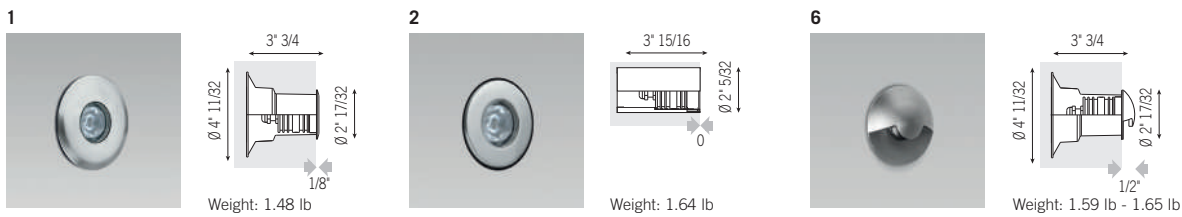
# THUNDER55



Family	Model	Size	Trim type	Optics	CCT	Fixture color	Wiring
Q- Wall recessed	TH Thunder	1 2"	1 Stainless steel round	2 Medium	3 3000K	US- 30 Stainless steel	I ICC 350mA
			2 Stainless steel round flush	4 4000K			
			6 Stainless steel bulging	0 Radial	3 3000K	US- 30 Stainless steel	I ICC 350mA
				1 One way	4 4000K		
				2 Two way			

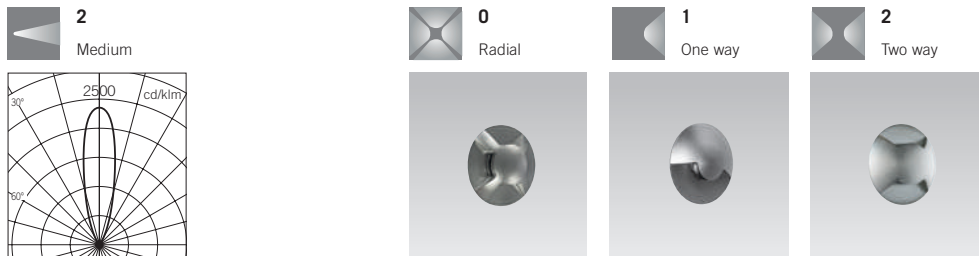


## Trim type



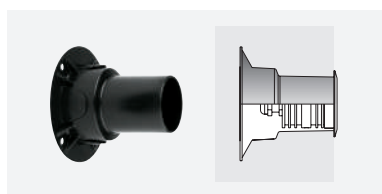
AISI 316L stainless steel frame

## Optics



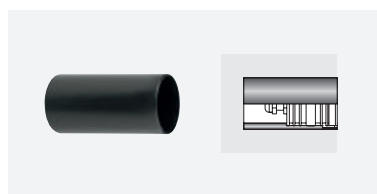
## Accessories

It is possible to purchase the recessed box separately, whenever it is necessary to start the installation in advance. The item can be ordered at a later time, and it will be supplied complete with recessed box (to be removed if purchased separately in advance).



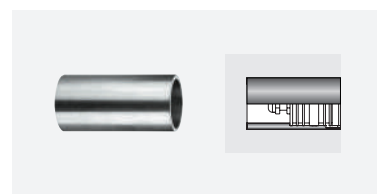
Code	lb
1099227X	0.18

Thermoplastic material recessed installation box.



Code	lb
1099226X	0.13

Thermoplastic material recessed installation box.



Code	lb
1099225X	1.32

Stainless steel AISI 316L recessed installation box.

