

Early places in school

If places are available children are admitted the term after their third birthday and are admitted in criteria and date of birth order. If an early place is not available the Families Information Service can also provide you with details of other registered providers.

What happens if I don't get a place in school?

Your child will be placed on a waiting list and you are able to apply for an alternative nursery including providers from the private, voluntary and independent sector. You can also contact the Family Information Service for details of other providers in your area.

What happens if I apply late?

Late applications are dealt with on a regular basis after those who apply on time receive their decisions.

Important – Reception places

You must apply again for reception places.

The closing date is 15 January 2018.

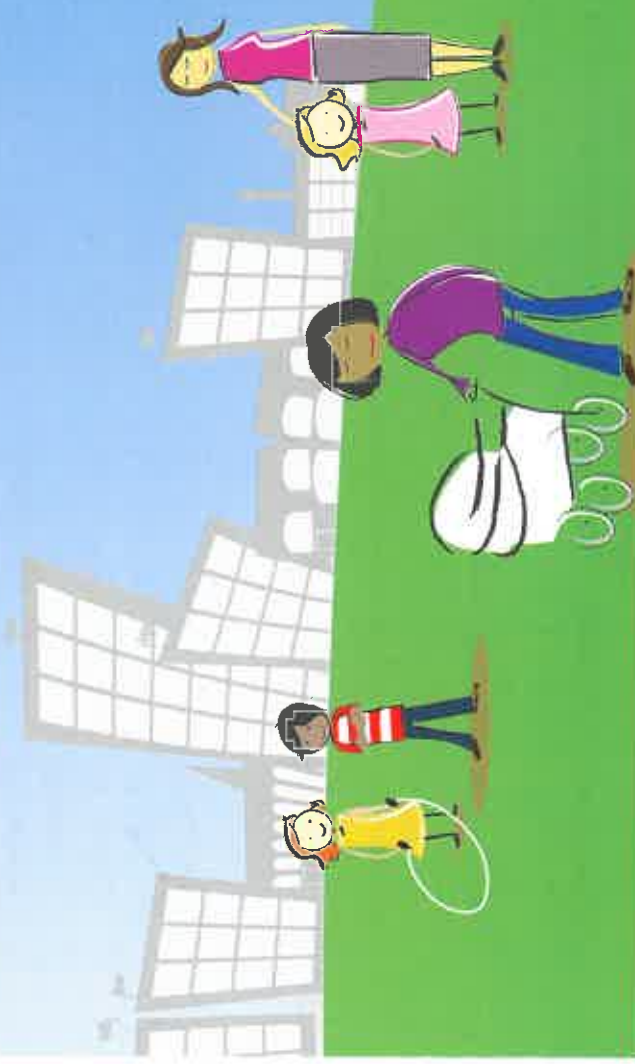
Attendance at a school nursery is not normally part of the admission to reception criteria. There is no automatic right of admission into a reception class. All parents must apply for the school they wish to attend.

Fraudulent applications

The Council makes every effort to ensure places are offered fairly. Fraud is taken very seriously and all allegations are thoroughly checked and places withdrawn if necessary.

Free Early Education Places for 3 and 4 Year Olds in Doncaster

Information on where your child can access a place and where to apply



School Nursery Applications: Apply online and instantly be sent your receipt

The Families Information Service can be contacted on 0800 1384568 or 01302 862136, by email at FIS@doncaster.gov.uk or visit the website www.doncasterchildrenandfamilies.info

The School Admissions Team can be contacted on 01302 737205 or by email at admissions@doncaster.gov.uk

1213-160 Nursery Mint



Doncaster
Metropolitan Borough Council

www.doncaster.gov.uk/admissions

INFORM 02/15 11/15 14



Doncaster
Metropolitan Borough Council

What is a free early education place?

A free early education place gives your 3 or 4 year old child the chance to learn, make new friends, experience new activities and **builds their** confidence. It is also an important preparation for school.

When can my child take up a free place?

Your child will be able to take up their place from the term after their birthday.

A child born between:	Is eligible from the start of the:	Take up the place before:
1 September – 31 December	Spring Term in January	19 January
1 January – 31 March	Summer Term in April	18 May
1 April – 31 August	Autumn Term in September	5 October

How many hours does my child get in a free early education place?

All children are entitled to 15 hours a week for 38 weeks of the year. For many children particularly those in school nurseries it will be three hours a day for five days a week during school term time. You may be able to choose a different pattern of attendance depending on which childcare provider you choose to use.

In September 2017 working parents will be given an additional free 15 hours making 30 hours in total. Contact the Council's Families Information Service for more information about eligibility.

Will I have to pay anything for my child's place?

No, the early education place is FREE. There can be no conditions on you taking up a place, for example, requiring you to take up extras. Some childcare providers and schools offer the option to buy more hours.

Where can my child take up their free early education place?

You can choose a school nursery or any childcare provider that is registered with the Council. There is a wide range of different types of childcare providers and you need to find out which suits you and your child best. They include: day nursery, child minder, independent school or sessional care which may be called playgroup or pre-school.

Where can I get information about childcare or schools in my area?

Contact the Council's Families Information Service for details of all school nurseries and the childcare providers registered with the Council to deliver the free early education places.

When and how do I apply?

Childcare Providers:

You will need to check if there are places available and follow their own admission process. This may include the completion of an information sheet and signing an agreement/contract for the place.

School Nursery:

You can apply for one school nursery by completing an application form or you can apply online at www.doncaster.gov.uk/admissions (except church schools).

For church schools complete section 2 of the form. You must attach a copy of your baptism certificate or a reference from your Parish Priest/ Minister of religion if you have one. Return your form directly to the school. If you make a further successful application, any previous places offered will automatically be withdrawn.

When do I apply for a school nursery?

The closing date for school nursery applications is 3 October 2016.

Applying late makes a big difference to your chances of getting a place

When do I find out about my school nursery application?

Letters are posted to parents on 4 November 2016.

Due to the volume of applications and data protection, no decisions will be given over the phone.

School admission dates

Children are normally admitted to a school nursery in the **September** following their third birthday.