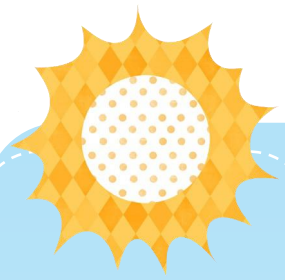


Mount St Catherine's Primary School



NEWSLETTER

March 2017



Contents

Little Buds, Big Buds

The Big Pedal

After School Clubs

School Support Group

KS2 Confession

The Lion King

Peace Proms

BOG Report

Questionnaire

Apostolic Bring and

Buy

Charity

Phonics and spelling

French Quiz

School Holidays



School Support Group

There will be a meeting of the group on Monday 3rd April at 7.00pm. All parents are welcome.

KS2 Confessions

KS2 pupils will have the opportunity to have Confessions on Wednesday 5th April

Charity for the month of March

Marys Meals have collected £169

Bun sale for Trocaire has generated £370

Little Buds, Big Buds:

The new premises for "Little Buds, Big Buds" is officially opened. A sizeable finding from Bright Start of £30,000 enable the renovation to take place. Staff pupils and parents are all delighted about the new premises which includes a new garden for outdoor play and plant beds. Please call and speak to staff if you would like any more information.

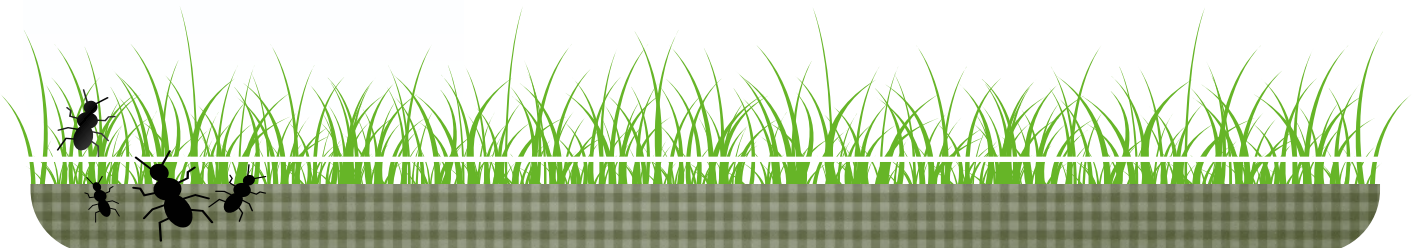
The Big Pedal:

The Big Pedal cycle event has begun in the school on Thursday 21st March where all children are encouraged to cycle or scoot to school. Mr Hughes is our Active Travel Champion and he will be promoting the initiative in the school. There will be a cycle/ scooter day on Wednesday 29th March when we hope to have a huge number of children in school with their bikes and scooters. Superhero day for cyclists will be Friday 28th April.



The Lion King:

Rehearsals for The Lion King are continuing every Wednesday and the children are enjoying the preparation. Performances will be in The Market Place Theatre on 8th and 10th May. Many thanks to Mrs Jordan and staff for co-ordinating and enthusing the children.



Peace Proms

Congratulations to all the children who performed in the SSE Area on Sunday 26th February with the Cross Border Orchestra of Ireland. This was as always a memorable event. Thanks to all

staff who assisted on the day Mrs Coleman, Mrs Basketfield and Mrs McArdle.



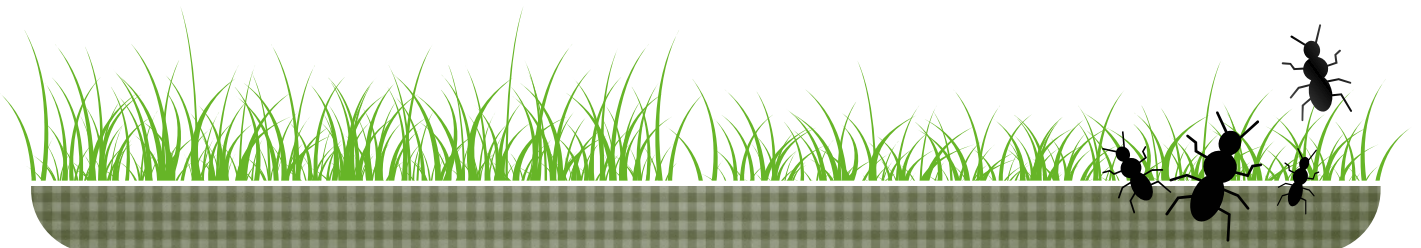
French Quiz

There will be a French quiz for KS2 pupils in Cathedral Road Recreation Centre at 7.00pm on Thursday 20th April.



New After School clubs:

Coding for P7—Friday
Art for P4—Thursday
High achievers for KS2—Thursday
Irish for P7—Tuesday
Literacy/Numeracy for P6—Tuesday



**Apostolic Bring
and Buy sale:**

**This event will
take place in the
school on**

**Saturday 1st April
Please support by
coming along on
that morning**



Board of Governors Report 2015/2016

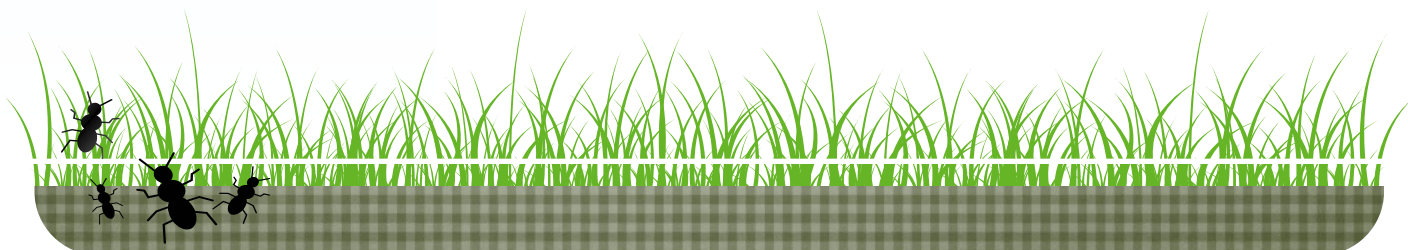
A copy of the above report is available from the office in hard copy should any parent wish to receive a copy. Please contact the office if interested.

Questionnaire for parents

A copy of the questionnaire has been issued to all parents. We would appreciate if parents could spare a few minutes to complete the booklet. School management will be taking note of the findings and an action plan drawn up to address any issues which may arise,. Thanks to all who have completed their copy already.

**Seminar regarding phonics/spelling for
parents**

There will be a meeting and coffee for the above on Wednesday 26th April at 9.15am Mrs McKenna and Mrs Creamer are to facilitate.

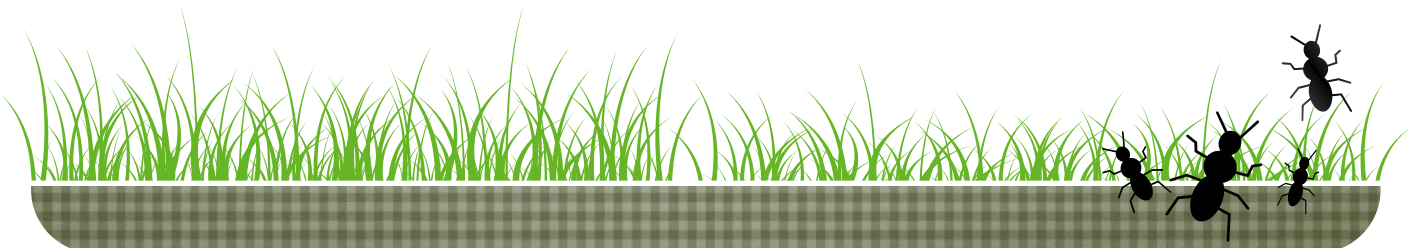


School Holidays

- School closes on Thursday 13th April at 11.00am.
- P7 pupils will attend Chrism Mass at 11.00am in the Cathedral and will be collected by parents afterwards.
- School closed on 14th — 21st April and reopens on Monday 24th April
- School closed for staff development days
 - 25th and 26th May and also on 29th and 30th May.
- School re-open on Wednesday 31st May
- School closes on Friday 30th June at 11.00am



coloringpage.eu



School on twitter:

Follow events, achievements of children and developments in the school on the twitter account on [@MSC Armagh](https://twitter.com/MSCArmagh).

Website: www.mountstcatherines.armagh.ni.sch.uk

Please take note of developments on the school website at www.mountstcatherines.armagh.ni.sch.uk

Reminder regarding children's attendance at school.

- Children should attend school each day. If child is sick or unable to attend school, the school should be contacted as early as possible
- Children should not be left off at school earlier than 8.45am unless they attend the breakfast club. Children are not insured on the premises before 8.45am.
- Please do not collect children early from school unless there is a very valid reason. Senior management will be contacted before children are released from school for any other reason.
- Parents are reminded to report to reception at all times before entering the school.

School twitter account

The twitter account offers insight onto development and events at school. Children are normally excited to hear about their appearance on school tweets.

Mount St Catherine's
Primary School
Windmill Hill
Armagh
BT60 4BR

Phone: 02837522241
Fax: 02837527422
E-mail:
pgildea461@c2kni.net

