

Link with Heath Mount Independent School:

- We have planned netball, hockey, football, rugby, cricket and athletics competitions.
- Proposed teacher links to share best practice.
- Discussed staff inset/observations run by Mr Naylor from Heath Mount School on EYFS/KS1 P.E.
- This year we will be looking at organising a 'Watton community sports festival' in conjunction with Heath Mount School.

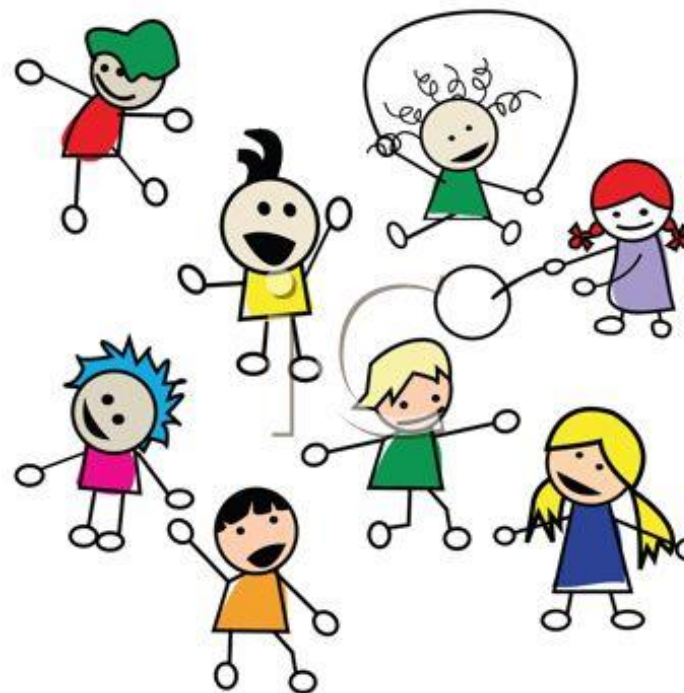
Healthy School:

- We will be applying to become a member of Hertfordshire's Healthy Schools.
- The daily mile will be rebranded as the 'Watton Warmup' and we will encourage teachers to take their classes out for a run on any day they don't have P.E.
- There will be a push for healthy lunchboxes and we will look into running a parents coffee morning to educate them on healthier choices for their child's lunchbox.

Leadership:

- We will be introducing 'Buddies' and 'Peer mentors' to help out at lunchtimes.
- KS2 children are also encouraged to think up and run their own active lunchtime clubs.
- P.E. monitors and sports council reps will also be introduced.

Physical Education & Sports - Enrichment 2017/2018



Festivals, Inclusion & Competitions:

- The Hertford & Ware School Sports Partnership (HWSSP) will be running many sports festivals this year. We aim to attend as many as possible and get most children taking part (Inclusion).
- HWSSP will be running various sporting competitions throughout the year, and we will enter as many as possible.
- This year we will be trying to get more of KS2 (years 3 & 4) competing for the school.

Extra-Curricular Clubs:

- There are 8 sports clubs offered to the children this autumn term.
- We have paid particular attention to feedback from the parents and children; this has led to more clubs for years 3 & 4.
- We will be looking into new sports clubs for the spring and summer terms, including hiring high quality assured coaches.
- This year we will try and target non active children to get them involved in extra-curricular sports.