

Welcome to Year 2



In Year 2 we aim to develop **presentation, practise our skills and persevere with our learning.**

Key staff in phase and school

- Class teachers - Mrs Bevan, Mrs Maker and Miss Flynn
- Support staff – Mrs Piper and Mrs Beckinsale
- Phase Leader – Mrs Elsom
- Assistant Head Teacher- Miss Northwood
- Deputy Head Teacher - Mrs Wagstaff
- Head Teacher - Mrs Durrant

Vision and values of the school

The school is led and run around our children – their needs are paramount.

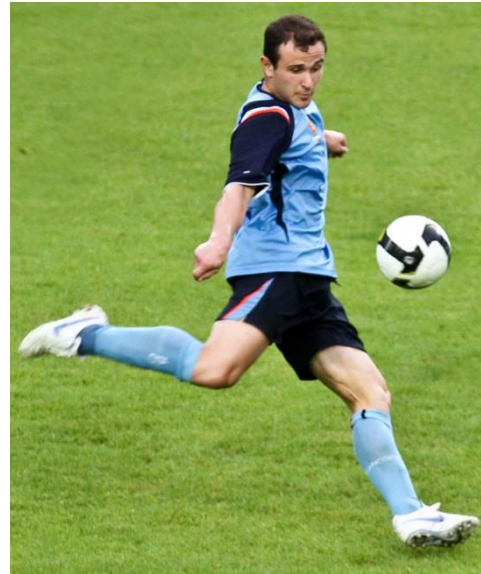
It is our responsibility to strive towards giving our children a world class education which they so rightly deserve.

3 core values

- Aspiration
- Integrity
- Identity

Aspiration

- High expectations of ourselves and each other
- Life long learning
- Can you ever reach your full potential?
- Striving to get better every day
- Learn from mistakes
- Determination and resilience
- Growth mindset - I can't do it... yet!



Integrity

- Moral purpose – to know right from wrong
- Honesty and fairness
- Make good decisions in life because it's the right thing to do
- Take responsibility for your actions

Identity

- Who are you?
- What is special about you?
- Respect differences in others
- Happy and confident with a high self esteem
- Strong sense of community
- Working together towards a common goal

**This is our school and we wear the badge with
pride!**

Girl's Uniform

Girls Winter Uniform Year 1-6

- Red V-neck sweatshirt or cardigan with school logo
- White shirt with a school tie
- Grey skirt, culottes, tailored trousers or pinafore dress (Skirts should be of a reasonable length with no side splits)
- Plain socks or tights (white or grey no trainer socks)
- Black shoes (Non-slip and flat. No trainers or boots which are higher than the ankle)

Girl's Summer Uniform Year 1-6

- (Can be worn after Easter holidays and up to the October half term. Winter uniform can still be worn in the summer)
- Red checked gingham dress
- Red sweatshirt or cardigan with school logo
- Plain socks (white no trainer socks)
- Black shoes (As specified in the winter uniform list and no strappy sandals, ankle straps or open toes in the summer)

Hair

- Functional and simple hair clips or bands are acceptable. They should be plain in design and either red, white or black.

Jewellery

- Small stud earrings
- Watch
- However, no jewellery should be worn during any lesson involving physical activity. If your child is too young, or unable, to remove or replace their own jewellery, please ensure that this is not worn to school on days when P.E. or swimming take place.

Boy's Uniform

Boys Winter Uniform Years 1-6

- Red V-neck sweatshirt or cardigan with school logo
- White shirt with a school tie
- Grey, tailored trousers
- Plain socks (black or grey -No trainer socks)
- Black shoes (non-slip, no trainers or boots which are higher than the ankle)

Boys Summer Uniform Years 1-6 (Can be worn after Easter holidays and up to the October half term)

- As the winter uniform however short grey trousers maybe worn

PE kit

- White plain T-shirt or T-shirt with the school logo
- Red shorts
- Trainers or black plimsolls (outdoor P.E. – pupils will be barefoot for indoor P.E.)
- Plain black or grey tracksuit (can be worn for outdoor P.E. in the winter months)

Attendance and punctuality

- Mrs McCann – Attendance officer
- School also has an EWO (Education Welfare Officer)
- School attendance last year 93.9%
- Whole school aim is to raise attendance to meet National expectations which is around 96%

Whole school incentive:

- Attendance race – classes with highest attendance earn prizes
- Fortnightly class certificates for 100% attendance
- Class rewards e.g. non-uniform day and extra play.

Descriptor	Threshold Attendance	Actual Attendance	Whole Days Absent	Learning Hours Lost
Excellent	100%	190 days	0	0
	99%	189 days	2	10
Good	98%	186 days	4	20
	97%	184 days	6	30
	96%	182.5 days	7.5	37.5
Satisfactory	95%	180.5 days	9.5	47.5

Serious concern is now 90% or below

Descriptor	Threshold Attendance	Actual Attendance	Whole Days Absent	Learning Hours Lost
Cause for concern	90%	171 days	19	95
	89%	169 days	21	105
	88%	167 days	23	115
	87%	165 days	25	125
Unsatisfactory	86%	163 days	27	135
Serious Cause for Concern	85%	161.5 days	28.5	142.5
	84%	159.5 days	30.5	152.5
	83%	158 days	32	160
	82%	156 days	34	170
	81%	154 days	36	180
Critical	80%	152 days	38	190

NHS Guidance

- High temperature/ coughs and colds/ Sore throat/ Tonsillitis and glandular fever – Paracetamol and fluids and if they feel better then send them in.
- Flu and swine flu – return to school once recovered (5 days usually).
- Head lice/ scabies/ threadworm – Once treated then must be in school.
- Diarrhoea and vomiting – 24hrs after the last episode.

NHS Guidance

- Hand, foot and mouth, warts and verucae, athletes foot and molluscum contagiosum
- Go to school – verrucae covered in swimming pool/ barefoot PE
- Conjunctivitis – Can go to school – encouraged to wash hands regularly.
- Impetigo – Once lesions are crusted they can return to school OR 2 days after starting antibiotics.

Behaviour

- The whole school has a set of rules to follow.
 1. We listen to and follow instructions.
 2. We keep our hands, feet and objects to ourselves.
 3. We speak politely and with respect.
 4. We take care of our own, the school's and other people's property.
 5. We always try our best at everything we do.

Going for Gold

- This colour coded system tracks behaviour and those children who end up in the red go to the Responsibility Room, parents are informed and behaviour is logged.
- Gold and silver awards are issued to celebrate those children who show behaviours such as resilience, determination and go above and beyond.
- Golden tickets are handed out at the end of the day by Mrs Durrant. In Celebration assembly on Friday is the golden ticket lottery and a winner is chosen. Prizes include a golden ball for the week, chair pass for the week, have lunch on the golden table and non uniform day.

Lunchtimes

- At lunchtimes we have a 'Responsibility Room' which is manned by teachers on duty. This is where children go for 15 minutes if they have ended up on the red part of the behaviour chart in class.
- Also during this time Midday Assistant will also send children in who break the rules and the incident is investigated by the teacher. The children fill in a reflection form and information is stored on SIMS.
- Positive behaviour is rewarded by 'stars' from the Midday Assistants and every term the child with the most stars are awarded a prize.

End of Year Expectations

- At the end of Year 2 we assess children against an interim framework that is set by the government.
- There are 3 standards on the framework:
 - WTS: working towards the expected standard
 - EXS: working at the expected standard
 - GDS: working at greater depth within the expected standard
- Common Exception words

SAT's

- In Year 2 the children undertake SAT's assessments, which are reported to the borough.
- These consist of maths, reading & writing. The children are assessed against the interim framework objectives.
- Assessments as undertaken in the children's classrooms, they will be familiar with the layout of the assessments.
- Teachers mark the assessments and have input in the results.

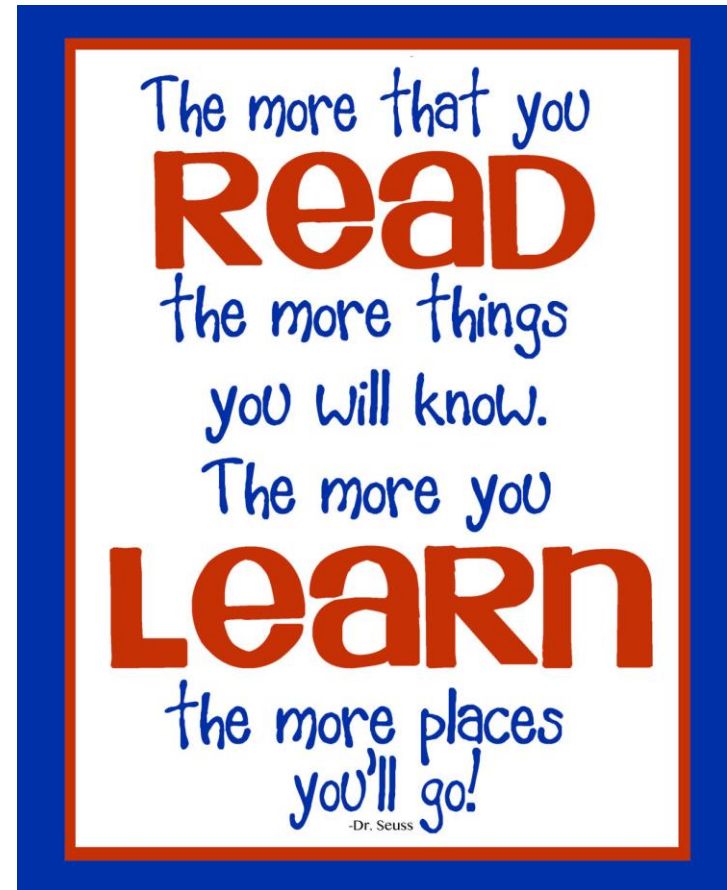
Homework

- Homework is issued every week on a Friday and this is due in on the following Thursday.
- Spellings and Times tables
- Library books



Reading at home

- It is the school expectation that children read at home at least 3 times a week, but ideally 5 times a week.
- Reading records will be checked for a parental signature and children will be asked to mark on a chart in class when they have 'read at home'.
- This could be their school book, a library book, or a book from home.
- A table of the percentage of children reading at home will be published in the newsletter on a Friday.



E-learning

- Bug club – www.activelearnprimary.co.uk
- Mathletics – www.mathletics.co.uk

Parent Engagement

- Parent Learn-a-long lessons – dates to follow
- Parent evenings and reports
- Open door policy
- Prefer to speak in person after school or on the phone
- Speak to class teacher about initial concerns, then the phase leader, senior leadership team.
- Emails to go through the office email address office@jamesoglethorpe.havering.sch.uk

Typical Day

Class	8:40 – 9:00	9:00 – 10:00	10:00 – 10:25	10:30 – 10:45	10:45 – 11:00	11:00 – 12:00	12:00 – 1:00	1:00 – 1:15	1:15 – 2:30	2:30- 2:45	2:45 – 3:10
Mon	Arrival & Registration	Maths	SPAG Drinks & snacks	Assembly	Break	Read, write, inc	Lunch	Story time	Topic / RE / ICT	Break	Newsround Reading 1:1 and at tables
Tues	Arrival & Registration	PE	Music	Assembly	Break	Read, write, inc	Lunch	Story time	Maths	Break	Newsround Reading 1:1 and at tables
Wed	Arrival & Registration	Maths	SPAG Drinks & snacks	Assembly (in class)	Break	Read, write, inc	Lunch	Story time	Topic / RE / ICT	Break	Newsround Reading 1:1 and at tables
Thurs	Arrival & Registration	Handwriting drinks & snacks 9:00 – 9:25	Maths 9:25-10:25	Assembly	Break	Read, write, inc	Lunch	Story time	Science	Break	Newsround Reading 1:1 and at tables
Fri Early morning briefing	Arrival & Registration	Head Teacher's Award Assembly	PE		Break	Read, write, inc	Lunch	Story time	Maths	Break	Newsround Reading 1:1 and at tables

Trips/ WOW moments

- Fire brigade visiting (Autumn term) – Great Fire of London
- Cinema trip – 10th November 2017
- Trip to Upminster Windmill & place of worship (Spring term) – Brilliant Buildings
- Nature reserve (Summer term) – Natural sculpture

Important dates

- Show Case Open Evening – Thursday 12th October 5-7pm
- Enterprise Week – Wb October 16th
- Assessments end of every half term
- Anti-bullying week – Wb 13th Nov
- Nativity – 18th (am) & 19th (pm) December
- Pantomime – Wednesday 20th December
- Science Mini Week - Wed 3rd Jan
- Y2 Music festival (spring term)
- Circus Week – Wb 16th April
- Happy Circus (JOPSPA) – Sat 21st April
- SATs Assessments – throughout May
- Y2 Phonics Screening – 2 weeks from Monday 11th June
- Sports day – Wednesday 18th July

Thank you for your
continuing support

Any questions?