

Welcome to Year 4



In Year 4, we aim to **encourage, enthuse, and excite** through our learning.

Key staff in phase and school

- Class teachers - Mrs Moon and Miss Broom
- Support staff - Miss Taylor
- Phase Leader – Mrs Moon
- Assistant Head Teacher- Miss Northwood
- Deputy Head Teacher - Mrs Wagstaff
- Head Teacher - Mrs Durrant

Vision and values of the school

The school is led and run around our children – their needs are paramount.

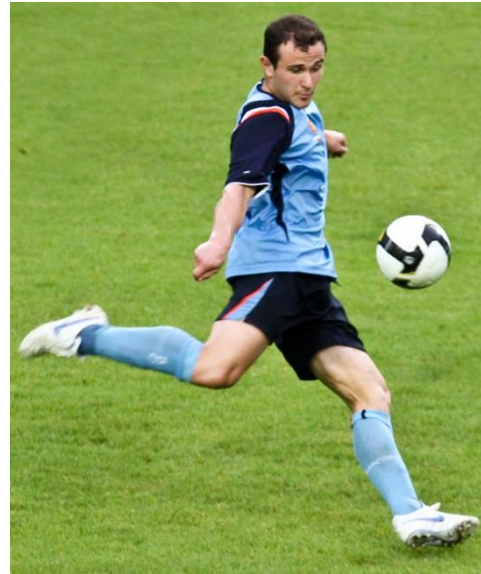
It is our responsibility to strive towards giving our children a world class education which they so rightly deserve.

3 Core Values

- Aspiration
- Integrity
- Identity

Aspiration

- High expectations of ourselves and each other
- Life long learning
- Can you ever reach your full potential?
- Striving to get better every day
- Learn from mistakes
- Determination and resilience
- Growth mindset - I can't do it... yet!



Integrity

- Moral purpose – to know right from wrong
- Honesty and fairness
- Make good decisions in life because it's the right thing to do
- Take responsibility for your actions

Identity

- Who are you?
- What is special about you?
- Respect differences in others
- Happy and confident with a high self esteem
- Strong sense of community
- Working together towards a common goal

**This is our school and we wear the badge with
pride!**

End of Year Expectations

- We measure our end of year expectations using the symphony assessment system.
- You will have found a copy of the symphony sheet for Year 4 on your seats.
- In symphony, the bold statements are the most important, these are the ones that we will want the children to have achieved at the end of the year before they can move on.

Attendance and punctuality

- Mrs McCann – Attendance officer
- School also has an EWO (Education Welfare Officer)
- School attendance last year 93.9%
- Whole school aim is to raise attendance to meet National expectations which is around 96%

Whole school incentive:

- Attendance race – classes with highest attendance earn prizes
- Fortnightly class certificates for 100% attendance
- Class rewards e.g. non-uniform day and extra play.

Descriptor	Threshold Attendance	Actual Attendance	Whole Days Absent	Learning Hours Lost
Excellent	100%	190 days	0	0
	99%	189 days	2	10
Good	98%	186 days	4	20
	97%	184 days	6	30
	96%	182.5 days	7.5	37.5
Satisfactory	95%	180.5 days	9.5	47.5

Serious concern is now 90% or below

Descriptor	Threshold Attendance	Actual Attendance	Whole Days Absent	Learning Hours Lost
Cause for concern	90%	171 days	19	95
	89%	169 days	21	105
	88%	167 days	23	115
	87%	165 days	25	125
Unsatisfactory	86%	163 days	27	135
Serious Cause for Concern	85%	161.5 days	28.5	142.5
	84%	159.5 days	30.5	152.5
	83%	158 days	32	160
	82%	156 days	34	170
	81%	154 days	36	180
Critical	80%	152 days	38	190

NHS Guidance

- High temperature/ coughs and colds/ Sore throat/ Tonsillitis and glandular fever – Paracetamol and fluids and if they feel better then send them in.
- Flu and swine flu – return to school once recovered (5 days usually).
- Head lice/ scabies/ threadworm – Once treated then must be in school.
- Diarrhoea and vomiting – 24hrs after the last episode.

NHS Guidance

- Hand, foot and mouth, warts and verucae, athletes foot and molluscum contagiosum
- Go to school – verrucae covered in swimming pool/ barefoot PE
- Conjunctivitis – Can go to school – encouraged to wash hands regularly.
- Impetigo – Once lesions are crusted they can return to school OR 2 days after starting antibiotics.

Going for Gold



The whole school has a set of rules to follow.

School Rules

1. We listen and follow instructions.
2. We keep our hands, feet and objects to ourselves.
3. We speak politely and with respect.
4. We take care of our own, the school's and other people's property
5. We always try our best at everything we do.



Lunchtimes

- 'Responsibility Room – Used at lunchtime for those children who get to red during lesson time.
- Children can be sent here by a MDA for a rule break at lunchtime.
- 'Lunchtime stars' are awarded by MDA's for positive behaviour
- Prizes for lunchtime stars are awarded every half term.

Homework

- Issued every week on a Friday.
- Due in on a Wednesday.
- Those who do not bring in their homework on time will be given a chance to bring in their homework the next day otherwise they will complete the activity with adult supervision on a Thursday lunchtime.
- Every child will have a homework book.
- A maths or English task alternating every week.
- Spellings sent home on Friday. Spellings and tables tested on Friday afternoon.

E-learning

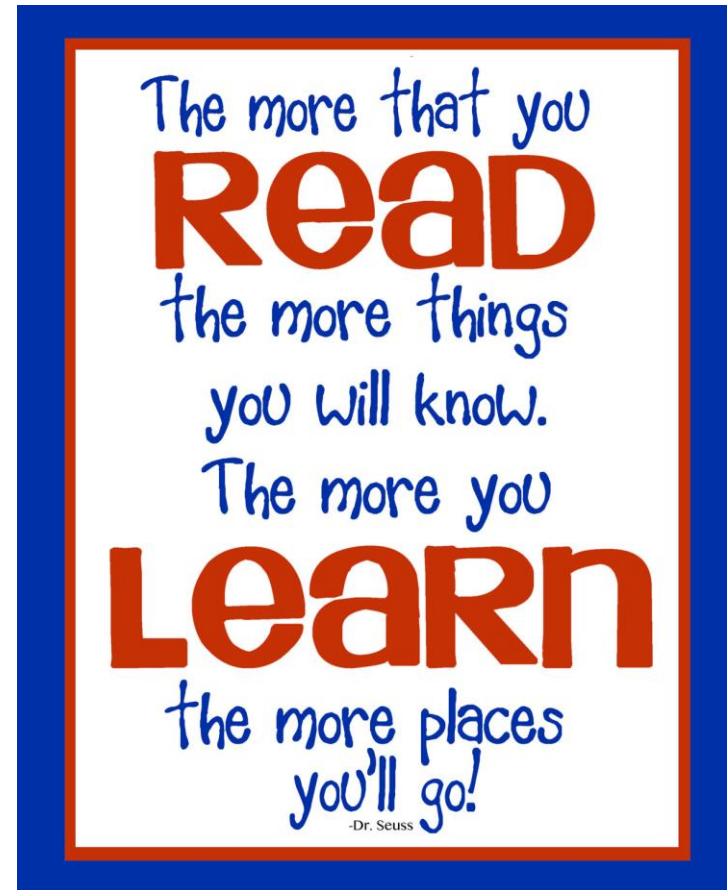


- Expectation – children visit mymaths, bug club, abacus and spag.com at least once a week
- Logins and passwords are stuck in the homework books



Reading at home

- It is the school expectation that children read at home at least 3 times a week, but ideally 5 times a week.
- Reading records will be checked for a parental signature and children will be asked to mark on a chart in class when they have 'read at home'.
- This could be their school book, a library book, or a book from home.
- A table of the percentage of children reading at home will be published in the newsletter on a Friday.



Parent Engagement

- Parent Learn-a-long lessons – dates to follow
- Parent evenings and reports
- Open door policy
- Prefer to speak in person after school or on the phone
- Speak to class teacher about initial concerns, then the phase leader, senior leadership team.
- Emails to go through the office email address

Girl's Uniform

Girls Winter Uniform Year 1-6

- Red V-neck sweatshirt or cardigan with school logo
- White shirt with a school tie
- Grey skirt, culottes, tailored trousers or pinafore dress (Skirts should be of a reasonable length with no side splits)
- Plain socks or tights (white or grey no trainer socks)
- Black shoes (Non-slip and flat. No trainers or boots which are higher than the ankle)

Girl's Summer Uniform Year 1-6

- (Can be worn after Easter holidays and up to the October half term. Winter uniform can still be worn in the summer)
- Red checked gingham dress
- Red sweatshirt or cardigan with school logo
- Plain socks (white no trainer socks)
- Black shoes (As specified in the winter uniform list and no strappy sandals, ankle straps or open toes in the summer)

Hair

- Functional and simple hair clips or bands are acceptable. They should be plain in design and either red, white or black.

Jewellery

- Small stud earrings
- Watch
- However, no jewellery should be worn during any lesson involving physical activity. If your child is too young or unable to remove or replace their own jewellery, please ensure that this is not

Boy's Uniform

Boys Winter Uniform Years 1-6

- Red V-neck sweatshirt or cardigan with school logo
- White shirt with a school tie
- Grey, tailored trousers
- Plain socks (black or grey -No trainer socks)
- Black shoes (non-slip, no trainers or boots which are higher than the ankle)

Boys Summer Uniform Years 1-6 (Can be worn after Easter holidays and up to the October half term)

- As the winter uniform however short grey trousers maybe worn

PE kit

- White plain T-shirt or T-shirt with the school logo
- Red shorts
- Trainers or black plimsolls (outdoor P.E. – pupils will be barefoot for indoor P.E.)
- Plain black or grey tracksuit (can be worn for outdoor P.E. in the winter months)

Typical Day CLASS 4M

Class 4M	8:40 – 9:00	9:00 – 10:25	10:30 – 10:45	10:45 – 11:00	11:00 – 12:15	12:15 – 1:15	1:15 – 1:35	1:35 – 3:00		3:00 – 3:15
Mon	Arrival & Registration Handwriting	Literacy and Language Spelling Grammar	Assembly	Break	Newsround (11am – 11.15) Maths	Lunch LM -RR Duty	Reading	PE	French	Story time
Tues	Arrival & Registration Handwriting	Literacy and Language Spelling Grammar	Assembly	Break	Newsround (11am – 11.15) Maths	Lunch LM -RR Duty	Reading	Creative		Story time
Wed	Arrival & Registration Spell Zoo	Literacy and Language Spelling Grammar	Assembly (in class)	Break	Newsround (11am – 11.15) Maths	Lunch	Reading	Science		Story time
Thurs LM Duty	Arrival & Registration Handwriting	Literacy and Language Spelling Grammar	Assembly	Break	Newsround (11am – 11.15) Maths	Lunch	Reading	Music PPA	PE PPA	Story time
Fri Early morning briefing	Arrival & Registration Handwriting	Head Teacher's Award Assembly	Literacy and Language Spelling Grammar	Break	Newsround (11am – 11.15) Maths	Lunch	Reading	Spelling test/ Tables test (1.35 – 2.15)	Computing (2.15-3pm)	Story time

Typical Day CLASS 4B

Class	8:40 – 9:00	9:00 – 10:25	10:30 – 10:45	10:45 – 11:00	11:00 – 12:15	12:15 – 1:15	1:15 – 1:35	1:35 – 3:00		3:00 – 3:15
Mon	Arrival & Registration	Literacy and Language (including spelling and handwriting)	Assembly	Break	Maths	Lunch	Reading	French	Science	Story time
Tues	Arrival & Registration	Literacy and Language (including spelling and handwriting)	Assembly	Break	Maths	Lunch	Reading	Swimming		Story time
Wed	Arrival & Registration	Literacy and Language (including spelling and handwriting)	Assembly (in class)	Break (Duty)	Maths	Lunch	Reading	Creative		Story time
Thurs	Arrival & Registration (Duty)	Literacy and Language (including spelling and handwriting)	Assembly	Break	Maths	Lunch (Phase Meeting)	Reading	PPA (PE and Music)		Story time
Fri Early morning briefing	Arrival & Registration	Head Teacher's Award Assembly	Literacy and Language (including spelling and handwriting)	Break	Maths	Lunch	Reading	ICT	Tests	Story time

Trips/ WOW moments

- Trip to the cinema for Into Film festival – 16th November 2017
- Swimming for 4B started this week on Tuesdays
- Visit to synagogue – Autumn term 2
- Roman workshop - Spring term

Important dates

- Show Case Open Evening – Thursday 12th October 5-7pm
- Enterprise Week – Wb October 16th
- Anti-bullying week – Wb 13th Nov
- Parents evening – Tuesday 14th November
Thursday 16th November
- Pantomime – Wednesday 20th December
- Mini Science Week - Wed 3rd Jan
- World Book Day – Thursday 1st March
- Circus Week – Wb 16th April
- Happy Circus (JOPSPA) – Sat 21st April
- Sports day – Wednesday 18th July
- Assessments end of every half term

Thank you

Any questions?