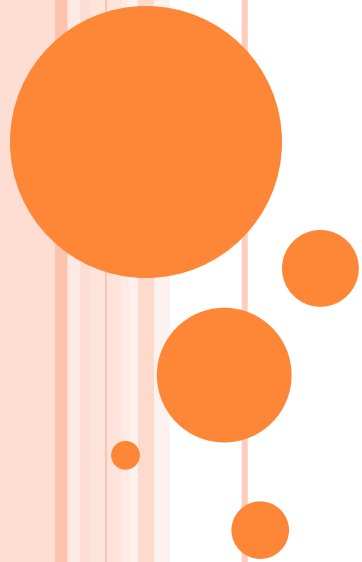




WELCOME TO YEAR 6

In Year 6 we aim to –Encourage, enthuse, engage and excite our pupils to learn through the Curriculum that we deliver.



KEY STAFF IN PHASE AND SCHOOL

- Class teachers in the Year Group are : Miss Northwood and Miss Marsh
- Support staff are Miss Stanton and Mrs Sarda
- Phase Leader- Miss Northwood
- Assistant Head Teacher- Miss Northwood
- Deputy Head Teacher: Mrs Wagstaff
- Head Teacher: Mrs Durrant



VISION AND VALUES OF THE SCHOOL

The school is led and run around our children –
their needs are paramount.

It is our responsibility to strive towards giving our
children a world class education which they so
rightly deserve.



VISION AND VALUES OF THE SCHOOL

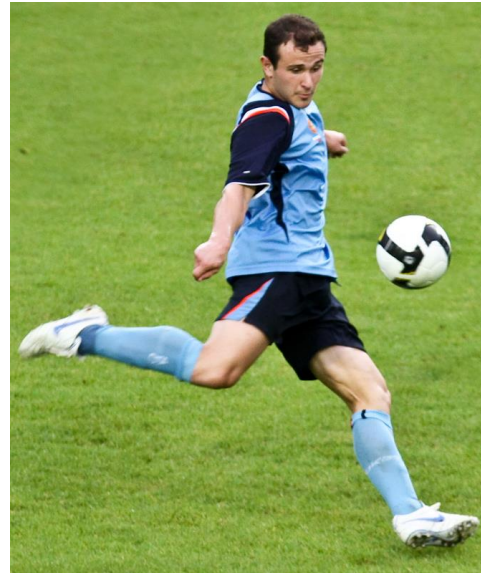
- Aspiration
- Integrity
- Identity



ASPIRATION

- High expectations of ourselves and each other
- Life long learning
- Can you ever reach your full potential?
- Striving to get better every day
- Learn from mistakes
- Determination and resilience
- Growth mindset - I can't do it... yet!





INTEGRITY

- Moral purpose – to know right from wrong
- Honesty and fairness
- Make good decisions in life because it's the right thing to do
- Take responsibility for your actions



IDENTITY

- Who are you?
- What is special about you?
- Respect differences in others
- Happy and confident with a high self esteem
- Strong sense of community
- Working together towards a common goal

**This is our school and we wear the badge
with pride!**



ATTENDANCE AND PUNCTUALITY

- Mrs McCann – Attendance officer
- School also has an EWO (Education Welfare Officer)
- School attendance last year 93.9%
- Whole school aim is to raise attendance to meet National expectations which is around 96%
- All lessons start at 9:00am. To enable your child to receive the delivery of a complete lesson he/she needs to be in ready to start at this time.

Whole school incentive:

- Attendance race – classes with highest attendance earn prizes
- Fortnightly class certificates for 100% attendance
- Class rewards e.g. non-uniform day and extra play.



Descriptor	Threshold Attendance	Actual Attendance	Whole Days Absent	Learning Hours Lost
Excellent	100%	190 days	0	0
	99%	189 days	2	10
Good	98%	186 days	4	20
	97%	184 days	6	30
	96%	182.5 days	7.5	37.5
Satisfactory	95%	180.5 days	9.5	47.5



SERIOUS CONCERN IS NOW 90% OR BELOW

Descriptor	Threshold Attendance	Actual Attendance	Whole Days Absent	Learning Hours Lost
Cause for concern	90%	171 days	19	95
	89%	169 days	21	105
	88%	167 days	23	115
	87%	165 days	25	125
Unsatisfactory	86%	163 days	27	135
Serious Cause for Concern	85%	161.5 days	28.5	142.5
	84%	159.5 days	30.5	152.5
	83%	158 days	32	160
	82%	156 days	34	170
	81%	154 days	36	180
Critical	80%	152 days	38	190



NHS GUIDANCE

- High temperature/ coughs and colds/ Sore throat/ Tonsillitis and glandular fever – Paracetamol and fluids and if they feel better then send them in.
- Flu and swine flu – return to school once recovered (5 days usually).
- Head lice/ scabies/ threadworm – Once treated then must be in school.
- Diarrhoea and vomiting – 24hrs after the last episode.



NHS GUIDANCE

- Hand, foot and mouth, warts and verrucae, athletes foot and molluscum contagiosum
- Go to school – verrucae covered in swimming pool/ barefoot PE
- Conjunctivitis – Can go to school – encouraged to wash hands regularly.
- Impetigo – Once lesions are crusted they can return to school OR 2 days after starting antibiotics.



END OF YEAR EXPECTATIONS

Interim Teacher Assessment Framework-used to make a teacher assessment judgement at the end of Key Stage 2.

- *Working towards the expected standard*
- *Working at the expected standard*
- *Working at greater depth within the expected standard*

This evidence is based on a broad range of evidence across the curriculum.



BEHAVIOUR

- The whole school has a set of rules to follow.
- 1. *We listen and follow instructions.*
- 2. *We keep our hands, feet and objects to ourselves.*
- 3. *We speak politely and with respect.*
- 4. *We take care of our own, the school's and other people's property.*
- 5. *We always try our best at everything we do.*

The system is called 'Going for Gold'

- This colour coded system tracks behaviour and those children who end up in the red go to the Responsibility Room, parents are informed and behaviour is logged.
- Gold and silver awards are issued to celebrate those children who show behaviours such as resilience, determination and go above and beyond.
- Golden tickets are handed out at the end of the day by Mrs Durrant. In Celebration assembly on Friday is the golden ticket lottery and a winner is chosen. Prizes include a golden ball for the week, chair pass for the week, have lunch on the golden table and non uniform day.



LUNCHTIMES

- At lunchtimes we have a 'Responsibility Room' which is manned by teachers on duty. This is where children go for 15 minutes if they have ended up on the red part of the behaviour chart in class.
- Also during this time midday assistant will also send children in who break the rules and the incident is investigated by the teacher. The children fill in a reflection form and information is stored on SIMS.
- Positive behaviour is rewarded by 'stars' from the Midday Assistants and every term the child with the most stars are awarded a prize.

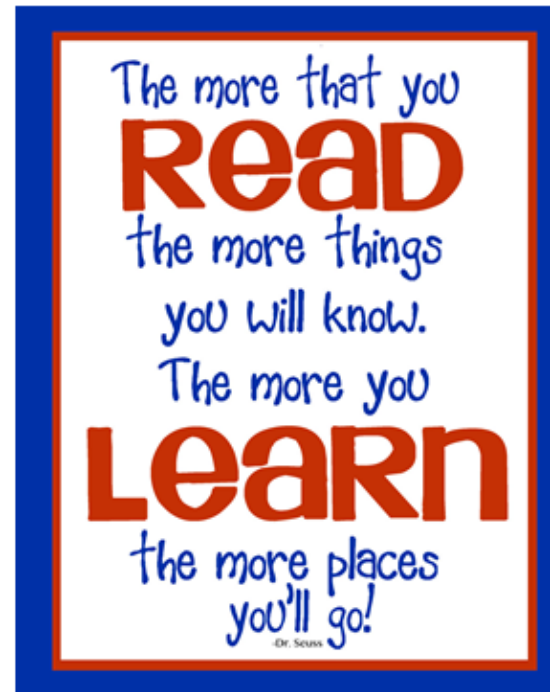


READING



Reading at home

- It is the school expectation that children read at home at least 3 times a week, but ideally 5 times a week.
- Reading records will be checked for a parental signature and children will be asked to mark on a chart in class when they have 'read at home'.
- This could be their school book, a library book, or a book from home.
- A table of the percentage of children reading at home will be published in the newsletter on a Friday.



HOMEWORK

- Maths, English and Spellings are issued every week on a Friday. It will be a mix of paper and online activities. The spellings will be linked to a rule taught every Friday.
- Every child will have a homework book in which to do this. Homework should be in by Thursday.
- Both classes will be tested on their spellings on a Thursday afternoon.
- To consolidate as well as challenge children in their time tables, both classes will take part in games and problem solving linked to this throughout the week.



E-LEARNING

- Children will have log ins to:
- Reading-Bug Club
- Maths-Mathletics / Mymaths

- These will sometimes be set for homework but in our phase we like to set both paper and online learning.
- Log ins will be fixed on the inside of the homework cover.



PARENT ENGAGEMENT

Parent Learn-a-long lessons

Parent evenings

Parent reports

Open door policy

Speak in person after school/ phone

CT/ Phase leader/ SLT (AHT/DHT/HT)

Emails must go through the office



UNIFORM-IS NOT COMPULSORY UNTIL SEPT 2018

○ **Girls Winter Uniform Year 1-6**

- • Red V-neck sweatshirt or cardigan with school logo
- • White shirt with a school tie
- • Grey skirt, culottes, tailored trousers or pinafore dress (Skirts should be of a reasonable length with no side splits)
- • Plain socks or tights (white or grey no trainer socks)
- • Black shoes (Non-slip and flat. No trainers or boots which are higher than the ankle)

○ **Girl's Summer Uniform Year 1-6**

- (Can be worn after Easter holidays and up to the October half term. Winter uniform can still be worn in the summer with short grey trousers as an addition)
- • Red checked gingham dress
- • Red sweatshirt or cardigan with school logo
- • Plain socks (white no trainer socks)
- • Black shoes (As specified in the winter uniform list and no strappy sandals, ankle straps or open toes in the summer)

○ **Hair**

- • Functional and simple hair clips or bands are acceptable. They should be plain in design and either red, white or black.

○ **Jewellery**

- • Small stud earrings
- • Watch
- However, no jewellery should be worn during any lesson involving physical activity. If your child is too young, or unable, to remove or replace their own jewellery, please ensure that this is not worn to school on days when P.E. or swimming take place.



UNIFORM

Correct footwear must be worn. This includes no trainers and ankle boots.

- **Boys Winter Uniform Years 1-6**

- • Red V-neck sweatshirt or cardigan with school logo
- • White shirt with a school tie
- • Grey, tailored trousers
- • Plain socks (black or grey -No trainer socks)
- • Black shoes (non-slip, no trainers or boots which are higher than the ankle)

- **Boys Summer Uniform Years 1-6** (Can be worn after Easter holidays and up to the

- October
- half term)
- • As the winter uniform however short grey trousers maybe worn

- **PE kit**

- • White plain T-shirt or T-shirt with the school logo
- • Red shorts
- • Trainers or black plimsolls (outdoor P.E. – pupils will be barefoot for indoor P.E.)
- • Plain black or grey tracksuit (can be worn for outdoor P.E. in the winter months)



TYPICAL DAY CLASS 6M

THE JAMES OGLETHORPE PRIMARY SCHOOL



Class 6M	8:40 – 9:00	9:00 – 10:00		10:00-10:25	10:30 – 10:45	10:45 – 11:00	11:00 – 12:15		12:15 – 1:15	1:15 – 1:35	2:00-3:00		3:00 – 3:15	
Mon	Arrival & Registration	Literacy & Language		Dictation	Assembly	Break	News round	Maths	Lunch	Reading	Science		Story time	
Tues	Arrival & Registration	Literacy & Language		Grammar	Assembly	Break	News round	Maths	Lunch	Reading	(PPA) PE	Music	Story time	
Wed	Arrival & Registration	Literacy & Language		Comprehension	Assembly (in class) SEAL/PSHE	Break	News round	Maths	Lunch	Reading	Handwriting	Basic Maths Skills	Basic English Skills	Story time
Thurs	Arrival & Registration	Literacy & Language		Grammar	Assembly	Break Duty	News round	Maths	Lunch (Phase Meeting)	Reading	Spelling Test	Creative		Story time
Fri Early morning briefing Gate Duty	Arrival & Registration	Head Teacher's Award Assembly	Literacy & Language		Spelling Rule Lesson	Break	News round	Maths	Lunch	Reading	French	PE	Story time	



TYPICAL DAY CLASS 6N

THE JAMES OGLETHORPE PRIMARY SCHOOL



Class	8:40 – 9:00	9:00 – 10:00/- 10:25		10:30 – 10:45	10:45 – 11:00	11:00 – 12:15		12:15 – 1:15	1:15 – 1:35	2:00-3:00			3:00 – 3:15
Mon (Gate duty)	Arrival & Registration	Literacy & Language	Dictation	Assembly	Break	News round	Maths	Lunch	Reading	Hand writing	Basic English skills	Basic Maths skills	Story time
Tues	Arrival & Registration	Literacy & Language	Grammar	Assembly	Break (Duty)	News round	Maths	Lunch	Reading	(PPA) MUSIC	PE		Story time
Wed	Arrival & Registration	Literacy & Language	Comprehension	Assembly (in class) SEAL/PSHE	Break	News round	Maths	Lunch	Reading	Creative			Story time
Thurs	Arrival & Registration	Literacy & Language	Grammar	Assembly	Break	News round	Maths (Phase Monitoring)	Lunch (Phase Meeting)	Reading	Spelling Test	SCIENCE (AHT)		Story time
Fri Early morning briefing	Arrival & Registration	Head Teacher's Award Assembly	Literacy & Language	Spelling Rule Lesson	Break	News round	Maths	Lunch (Responsibility Room)	Reading	French	PE		Story time



TRIPS/ WOW MOMENTS

- West Runton
- Stubbers-1/6/18
- Enterprise Week with reception
- Thames Chase Orienteering
- Art and Craft Week
- Language Week



IMPORTANT DATES

- Show Case Open Evening – Thursday 12th October 5-7pm Enterprise Week – Summer term
- SATs Parent Meeting after half term
- Anti-bullying week – Wb 13th Nov
- Parents evening – Tuesday 14th November / Thursday 16th November
- Pantomime – Wednesday 20th December

- Mini Science Week - Wed 3rd Jan
- World Book Day – Thursday 1st March
- Circus Week – Wb 16th April
- Happy Circus (JOPSPA) – Sat 21st April

- SATs week – 14.5.18
- Writing Teachers Assessments – during months of May and June 2018
- Y6 Play – Tuesday 17th July 2018
- Sports day – Wednesday 18th July 2018

- Mock SATs Assessments end of every half term



THANK YOU

- Any questions?

