



# HATTON OUTREACH

## Direct Referrals –

Hatton Outreach Support Service exists to support primary aged children who experience a range of learning needs.

Direct referrals have been developed to support children on SEN Support or with needs not identified on an EHCP plan.

We work with pupils who have:

### Speech and Language Impairment -

Including receptive and expressive language difficulties

### Social and communication Difficulties -

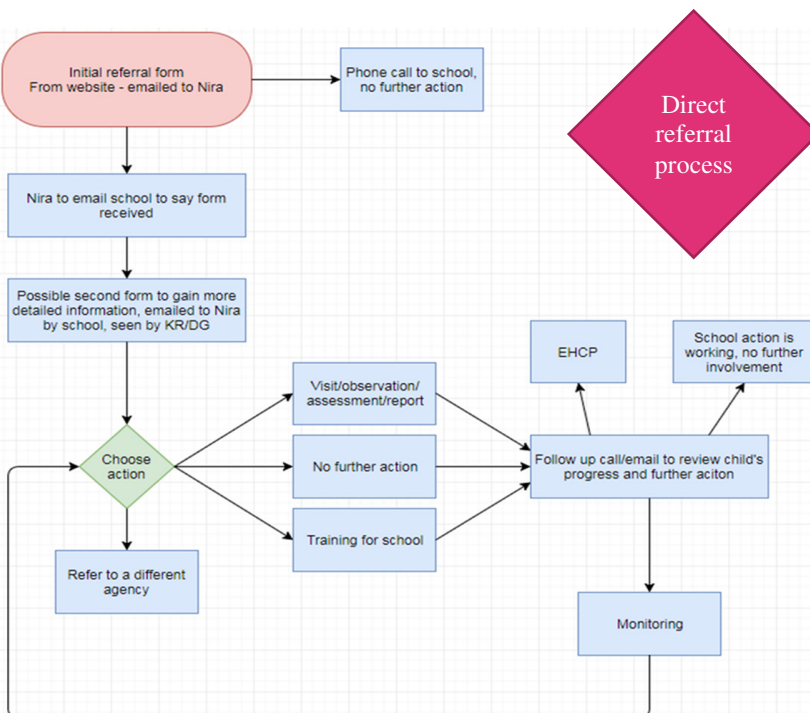
Including a wide range on the autism spectrum

### General Learning Difficulties -

Those whose learning is delayed in all areas who may also have a range of specific syndromes

### Specific Learning Difficulties -

Those who have specific difficulties in the areas of literacy and/or numeracy.



'PROUD of the Hatton Way; LEARNING, GROWING, ACHIEVING TOGETHER'

Direct Referral forms can be obtained from -

[www.hattonspecialschool.co.uk](http://www.hattonspecialschool.co.uk)

or

[niramandalia@hattonspecialschool.co.uk](mailto:niramandalia@hattonspecialschool.co.uk)



Need to get parents' permission

The Referral process –

1. Complete the first referral form and email to Hatton OSS
2. An acknowledgement email and second more detailed form may be sent out to schools
3. Email the second form, this will be looked at by the Referral team who will contact the school to arrange next steps.



## Outreach Support Service

Roding Lane South, Woodford Green, Essex, IG8 8EU

Tel: 020 8551 4131,

e-mail: [davidgardner@hattonspecialschool.co.uk](mailto:davidgardner@hattonspecialschool.co.uk),

website: [www.hattonspecialschool.co.uk](http://www.hattonspecialschool.co.uk)

Headteacher: Mrs Adrienne Wright