



Newsletter 30

2017/2018 Whitchurch Primary School
10.05.18 22 Bristol Road, BS14 0PT

www.whitchurchprimary.co.uk
www.whitchurchpri.primaryblogger.co.uk
Tel: 01275 833593

YEAR 6 SATs

Next week is SATs week, in which our Year 6 children will complete National tests. Good luck to Year 6, you've worked extremely hard throughout the school and it's time to show what you can do! Please help your children by having them in school, on time, every day next week! Thank you.



YEAR 1 AND 2

This term Year 1 and Year 2 have started a new topic about houses and homes. Year 2 have been creating paintings of cottages using watercolours. This has been a perfect way for them to relax after many busy mornings. Well done Year 2!



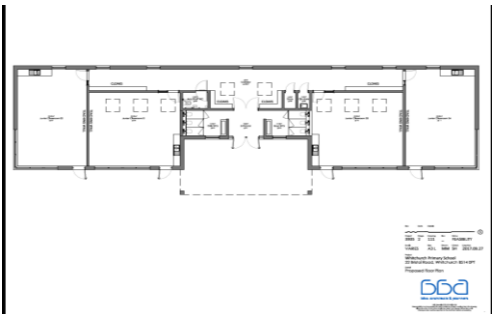
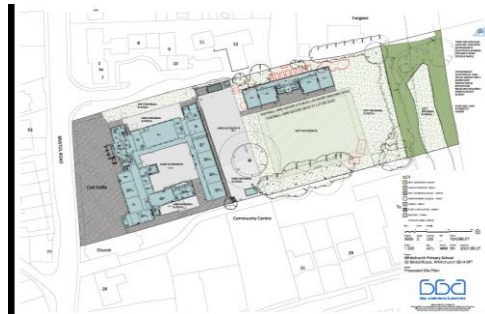
REAL PROJECT – Our EYFS is undertaking a joint project with St Nicholas Pre-School, and recently we welcomed parents and children from the Pre-School for a skills development session.



EXPANSION - It has been brought to our attention that some parents in the school do not feel they are being kept up to date with progress concerning our school's expansion. Please be aware that as the expansion was the decision of the Local Authority (LA), it is the LA who are largely in control of this scheme. Therefore, when we receive information from the LA, we discuss it with them and then pass it on to you. The expansion was not the decision of Mr. Hornsby, or anyone else in the school, nor can it be directed by them.

Of course, **everyone** has a say in the expansion, made possible by our consultation evenings which a selection of parents attended, and planning permission consultations which are yet to be held. Rest assured when we do receive information concerning these events we will let you know immediately.

In the meantime, as already published by the school, here are the proposed plans detailing the expansion's floor plan and location. Thank you.



ATTENDANCE - I have received a high number of holiday requests from parents in the school as the summer season approaches. Please be aware these cannot be authorised and you run a risk of being fined for unauthorised absence. Please note, the money does not come to the school, and the school does not benefit in any way from the fining system, other than to ensure all children are in school learning as much as possible.

PHOTOGRAPHS – If you would like to order a class photo, please ensure that you return your proof envelope with payment to the school office by next Tuesday 15th May.

DIARY DATES

Year 6 – Leavers church service – Wednesday 18th July – 9am at St Nicholas Church. Presentations will take place in the church.

Year 6 – Leavers performance – Monday 16th July 6pm and Tuesday 17th July during the afternoon in school – time to be confirmed.

ROYAL WEDDING LUNCH AND MENU CHANGE – To acknowledge the Royal wedding , next Friday 18th May, we will be serving a Royal Wedding Lunch of fish and chips. If you would like your child to have the lunch please ensure they have money on their Parentpay account under dinner money. Thank you. On Thursday 17th May the cottage pie will be replaced by burgers and hot dogs with rice krispie cakes.

THIS WEEKS' ATTENDANCE RESULTS!

Reception: 98.6%

Year 1: 97%

Year 2: 99.5%

Year 3: 91%

Year 4: 99.1%

Year 5: 96.3%

Year 6: 99%

THE WINNERS THIS WEEK ARE YEAR 2!

Year 2 will receive 10 minutes extra play time!

THE HOUSE WITH THE HIGHEST ATTENDANCE THIS WEEK IS **PINE** WITH 98.7%

PRAISE AND SHOWCASE!

Each week the school rewards children from each class with special certificates!

One will be awarded for excellent behaviour, the other for superb work, which will go into a 'showcase' book for visitors to view in the school office. Photos can be viewed on the website shortly!

This week's children are:

RECEPTION: Kenzie and Eden have been praised – Harry and Isla have received the showcase award

YEAR 1: Delilah has been praised – Betsie has received the showcase award

YEAR 2: Harry B has been praised – Caolan has received the showcase award

YEAR 3: Leatiesha has been praised – George has received the showcase award

YEAR 4: Liam has been praised – Riley has received the showcase award

YEAR 5: Beth has been praised – Annabelle has received the showcase award

YEAR 6: Eme has been praised – Livy has received the showcase award