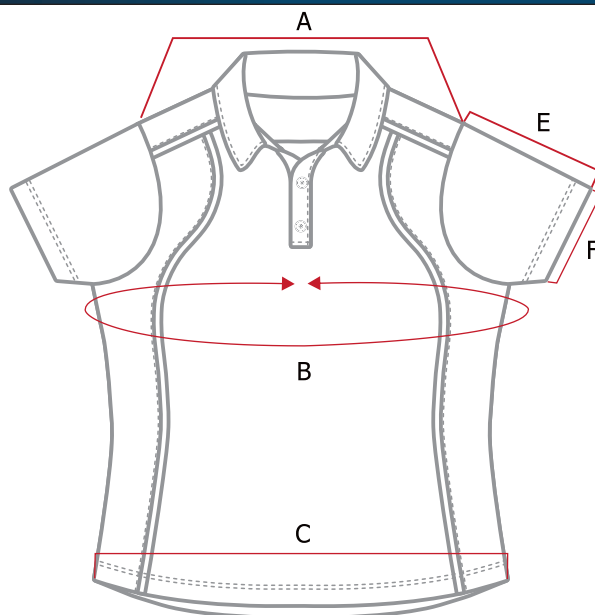


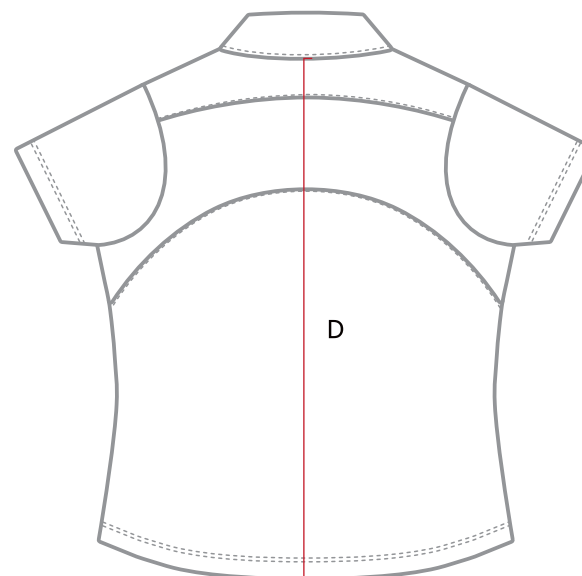
MASURI Ladies Performance Cricket Playing Shirt Set In Short Sleeve

SIZES: 6J - 16J (LADIES JUNIOR)
STYLE CODE: MCWJ0013

BODY: 100% POLY MICRO MESH 165GSM
100% POLY MICROMEH 165GSM (SIDE PANEL)



Front



Back

Garment Specification (Inches)

Measurement Position	6J	8J	10J	12J	14J	16J
A. SHOULDER WIDTH	11 ¾	12 ½	13 ½	14 ¼	15	15 ¾
B. CHEST CIRCUMFERENCE	26	27 ½	29 ¼	30 ¾	32 ¼	33 ¾
C. HEM RELAXED	12 ½	13 ½	14 ¼	15	15 ¾	16 ½
D. CENTRE BACK	19 ¼	20	20 ¾	21 ¾	22 ½	23 ¼
E. SLEEVE LENGTH	4 ¼	4 ½	4 ¾	5	5	5 ¼
F. HALF SLEEVE OPENING	4	4	4 ¼	4 ¾	5	5 ½