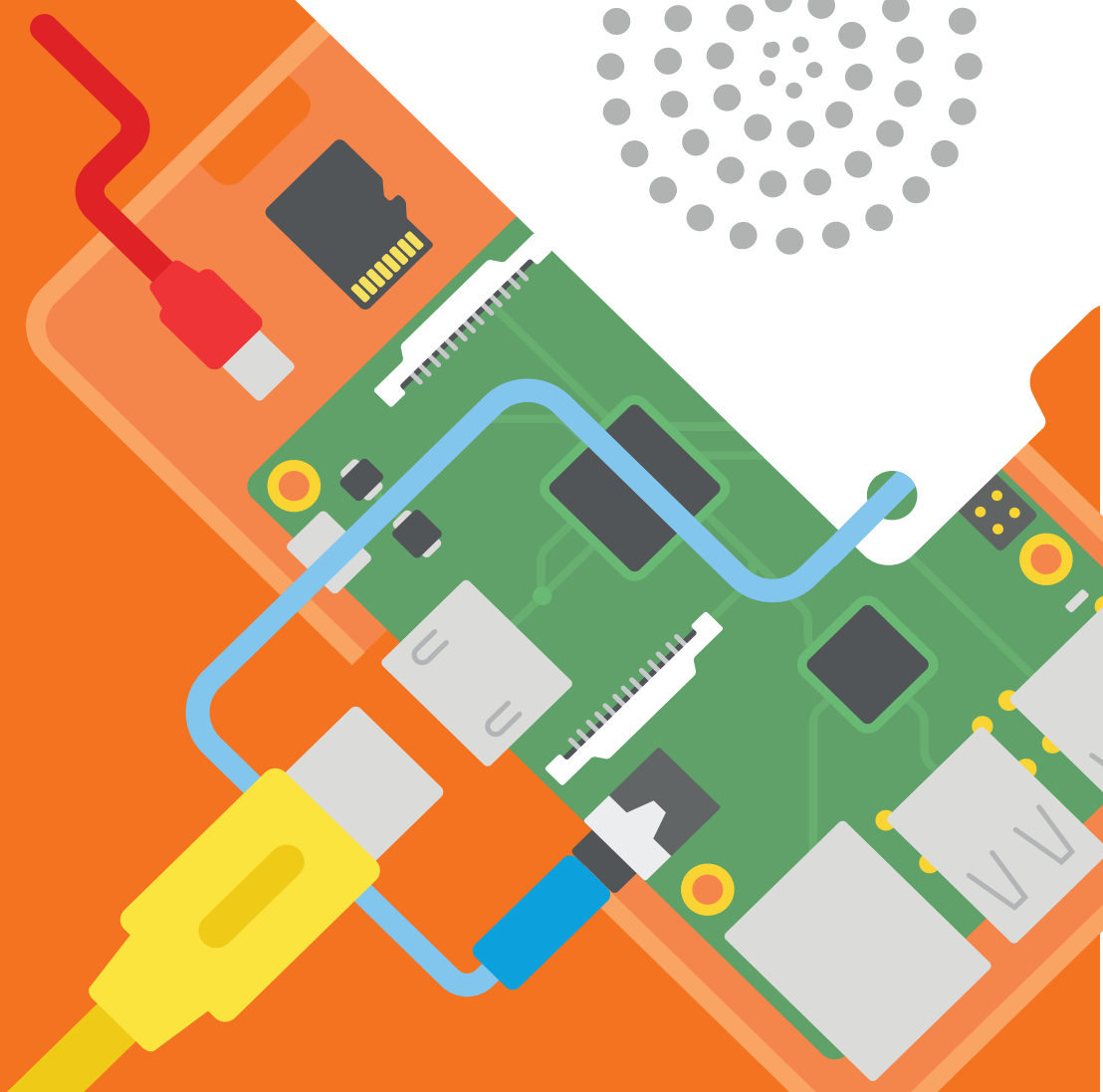
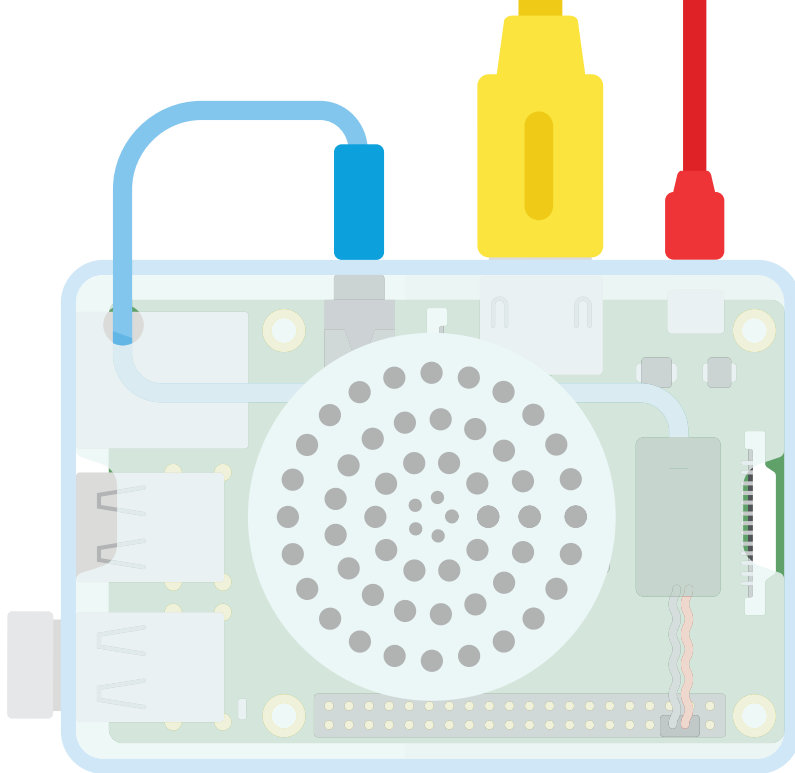


K

COMPUTER BOOK

Costruisci un Computer





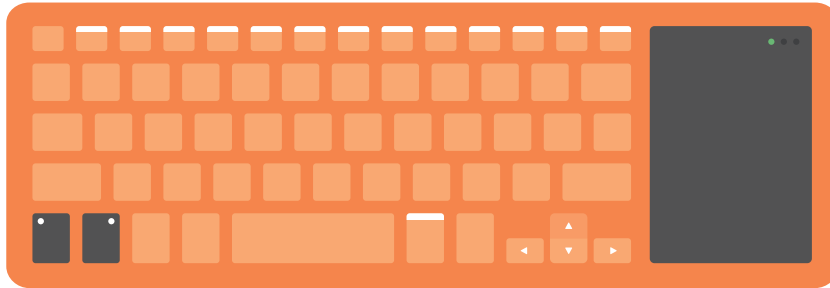
Il Computer kit di _____

IL TUO NOME

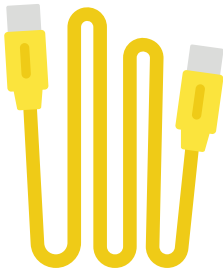


Ciao! Sono Judoka, il tuo
compagno di KANO. Sei pronto
a partire? **Tira fuori i pezzi
dalla scatola!**

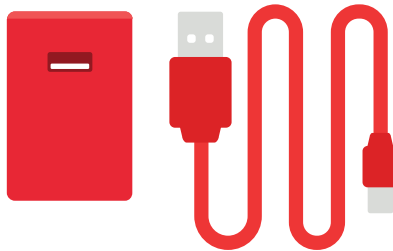
Tastiera + Mouse



Cavo HDMI



Alimentatore e
cavi elettrici



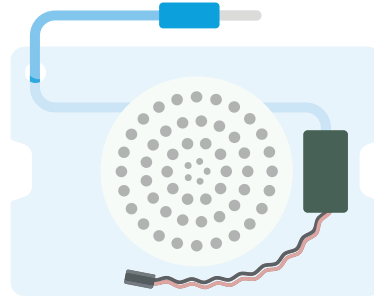
Memory Card



Adesivi



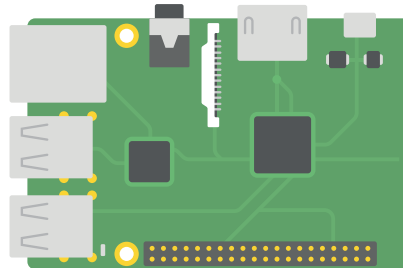
Altoparlante fai-da-te



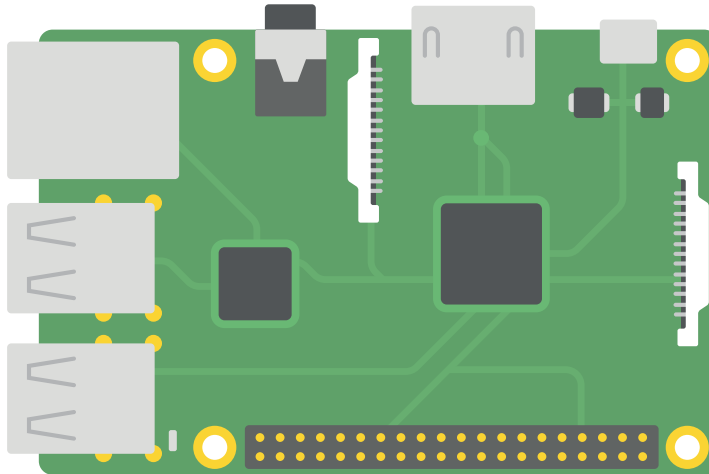
Contenitore personalizzato



Raspberry Pi

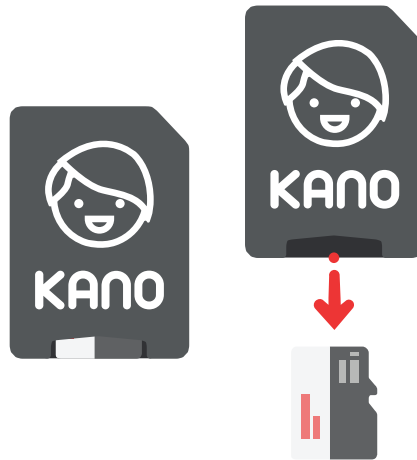


Questo è il cervello del tuo computer



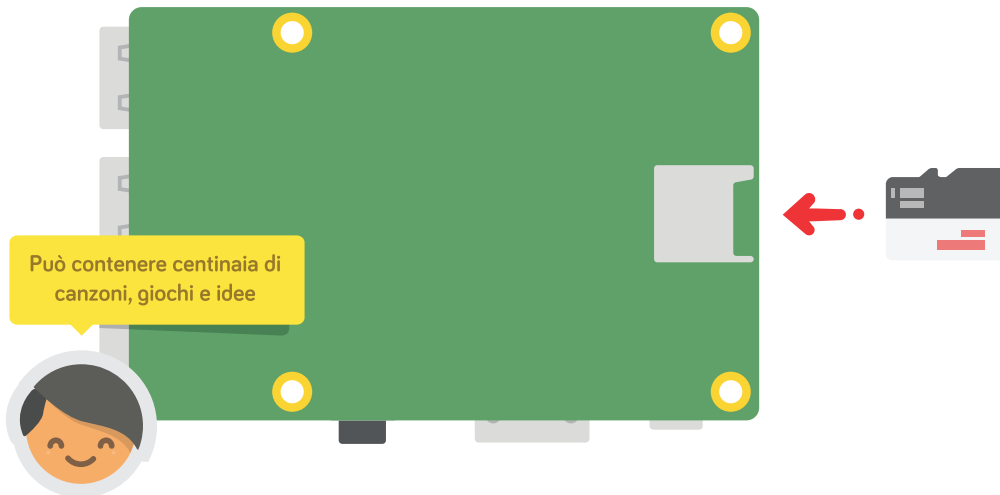
E' piccolo, ma potente

Diamo al cervello nuovi poteri



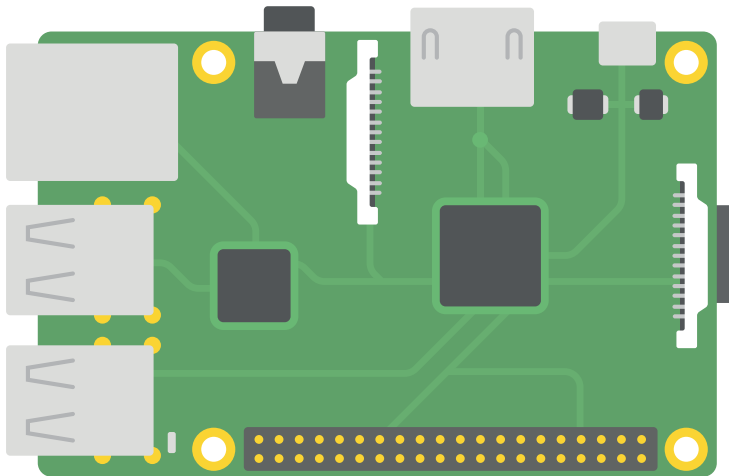
Prendi la scheda di memoria, poi rimuovi la micro card

Gira il cervello



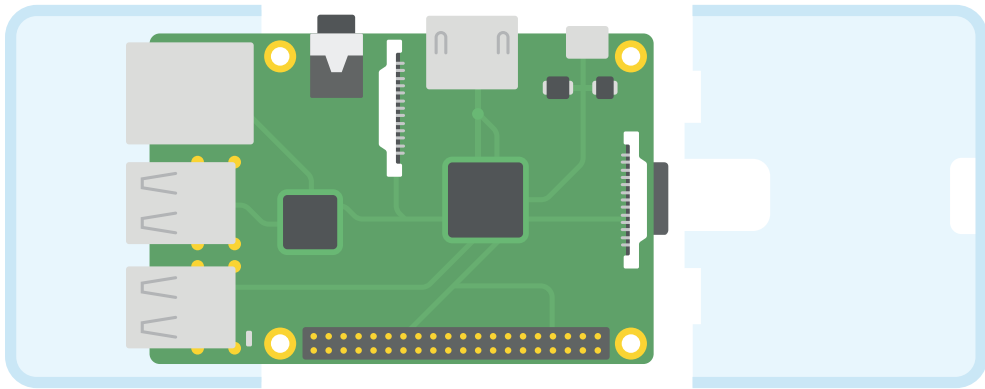
Inserisci la micro card in maniera sicura

Per mantenerla al sicuro,



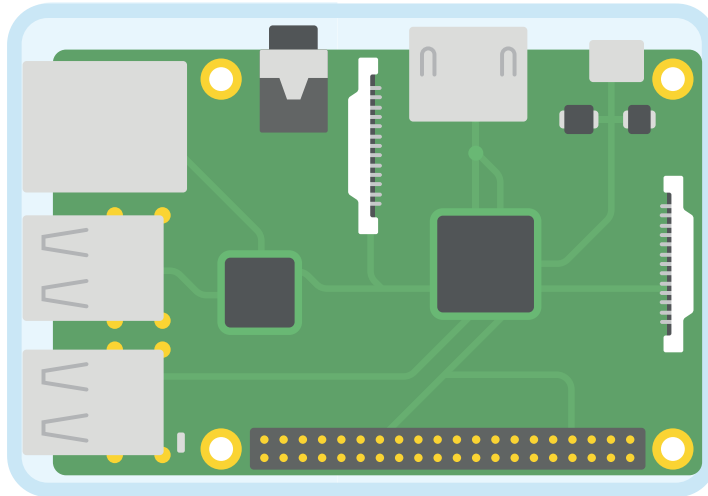
costruiamo un contenitore

Prendi i lati...



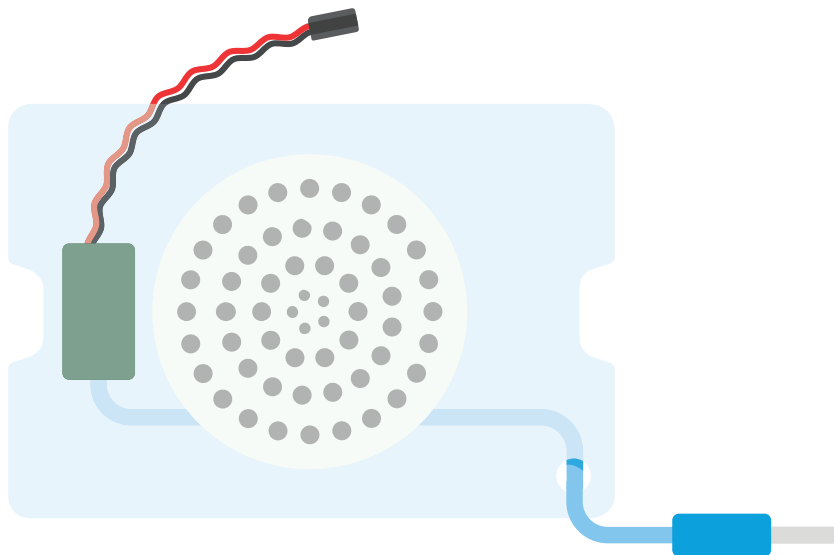
...e allineali

Falli scorrere assieme finché non senti un "click"

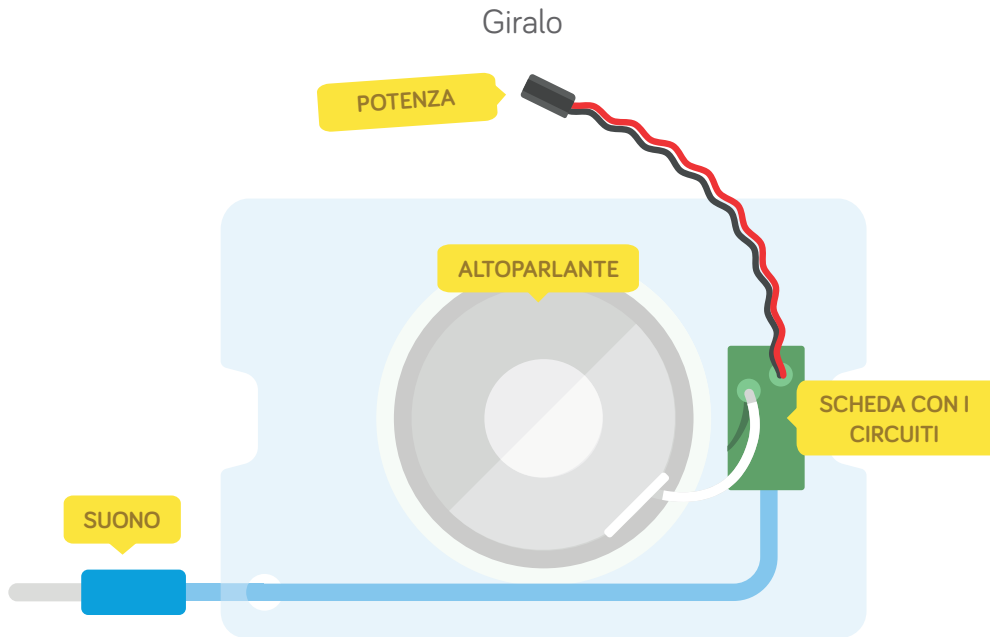


Ora hai una mente con un'armatura e una memoria!

Ora diamogli la possibilità di parlare

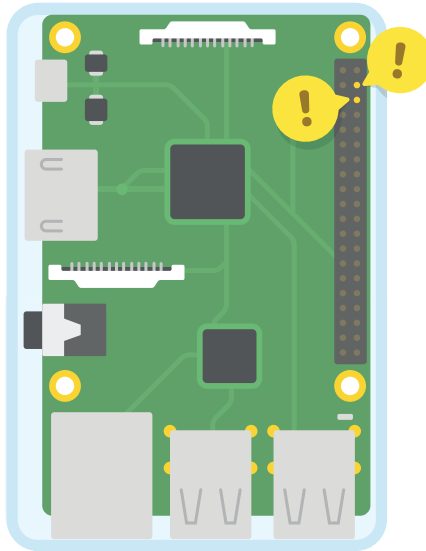


Prendi l'altoparlante



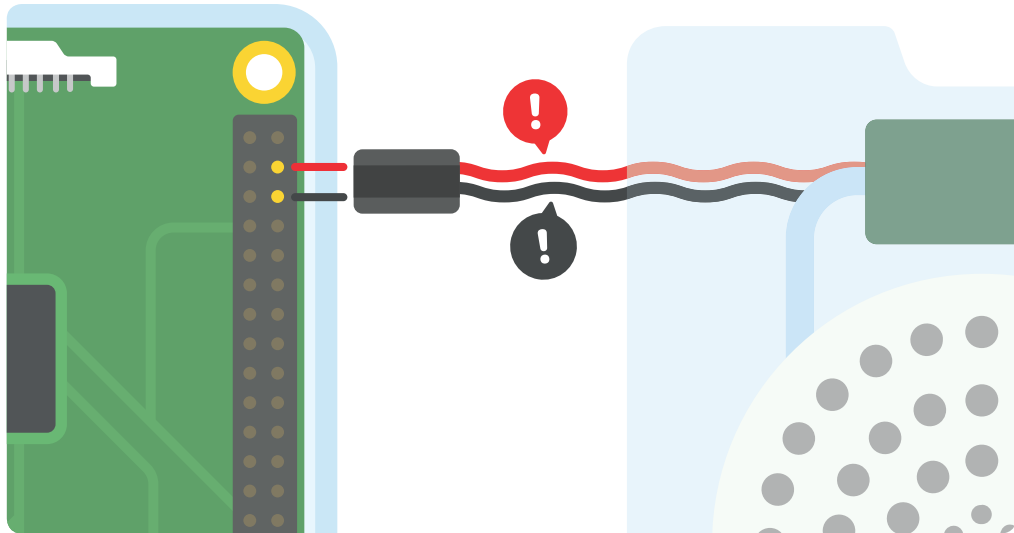
Queste parti lavorano assieme per cantare delle canzoni

Il tuo computer può trasformare l'elettricità in suono e luce!



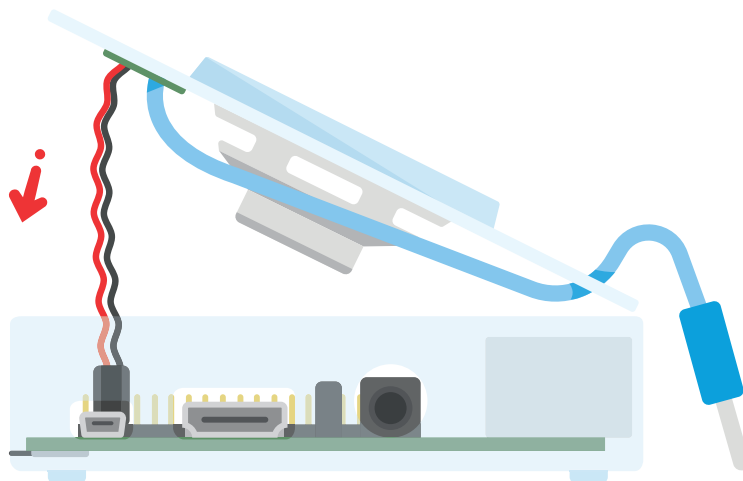
Portiamo l'elettricità da questi due pin

Assicurati di collegarlo in questa maniera

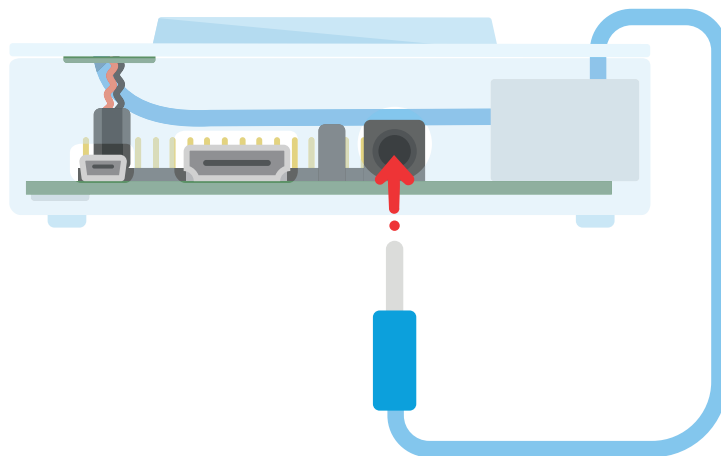


Scegli i pin con cautela!

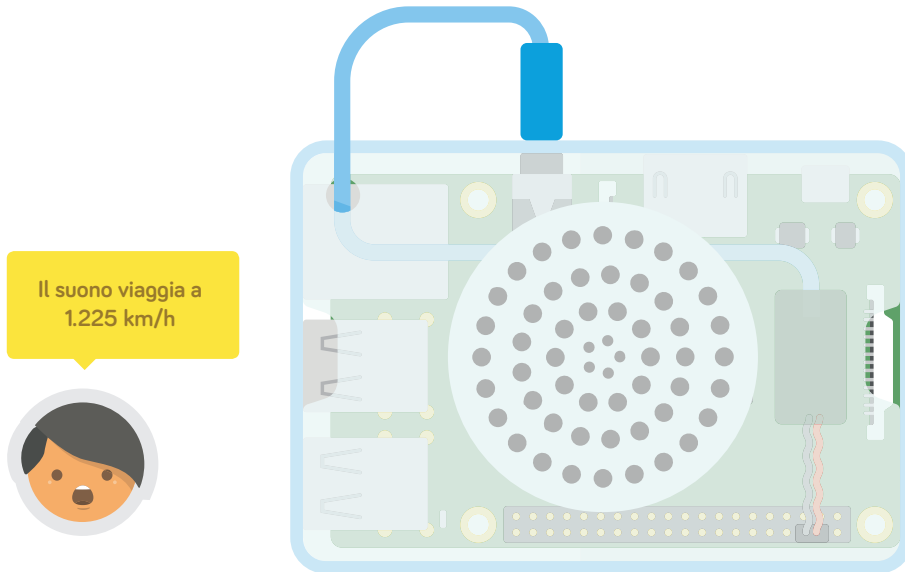
Ora attacca l'altoparlante al contenitore



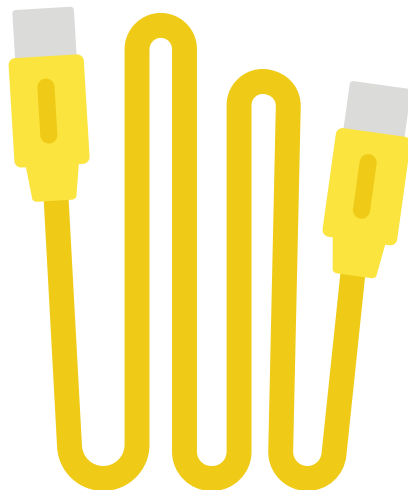
Inserisci il cavo blu



Impressionante! Un bel computer che spacca



Collegiamo lo schermo



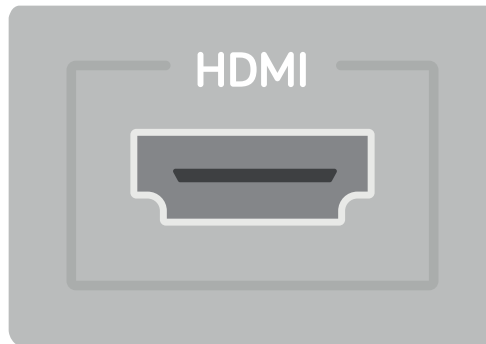
Hai lo Screen Kit?
Controlla le sue istruzioni
per aiutarti a collegarlo



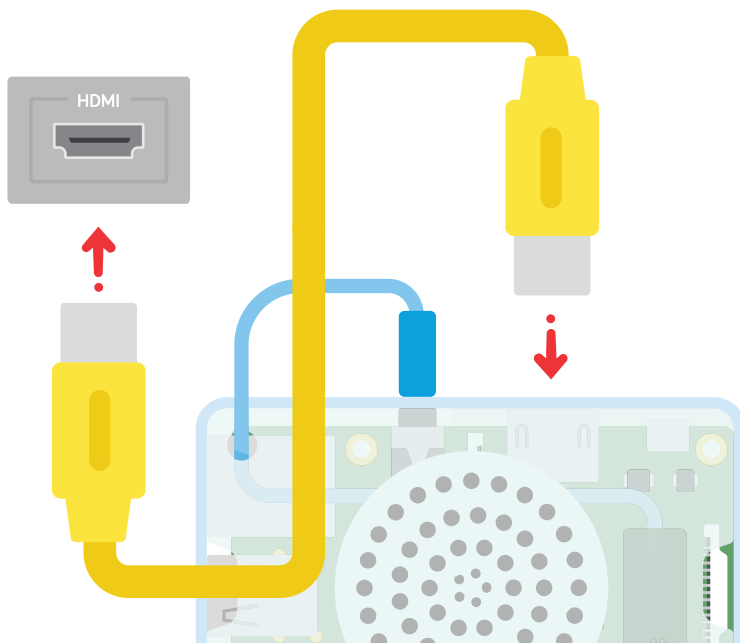
Prendi il cavo HDMI giallo

Trova uno schermo o una TV con questo tipo di presa

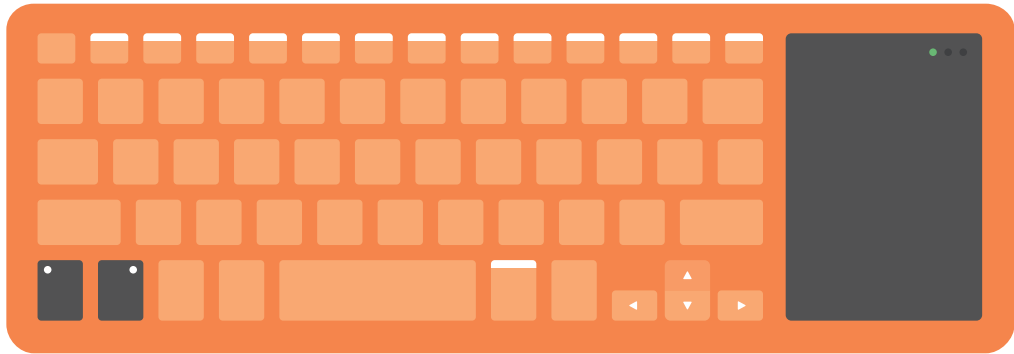
Hai un tipo di
presa diversa?
Visita help.kano.me



Connettili

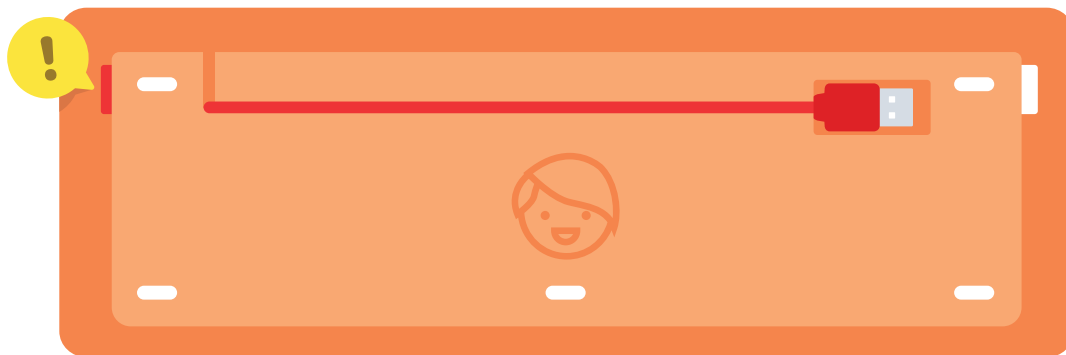


Ora il tuo computer può parlare, mostrare cose e collegarsi

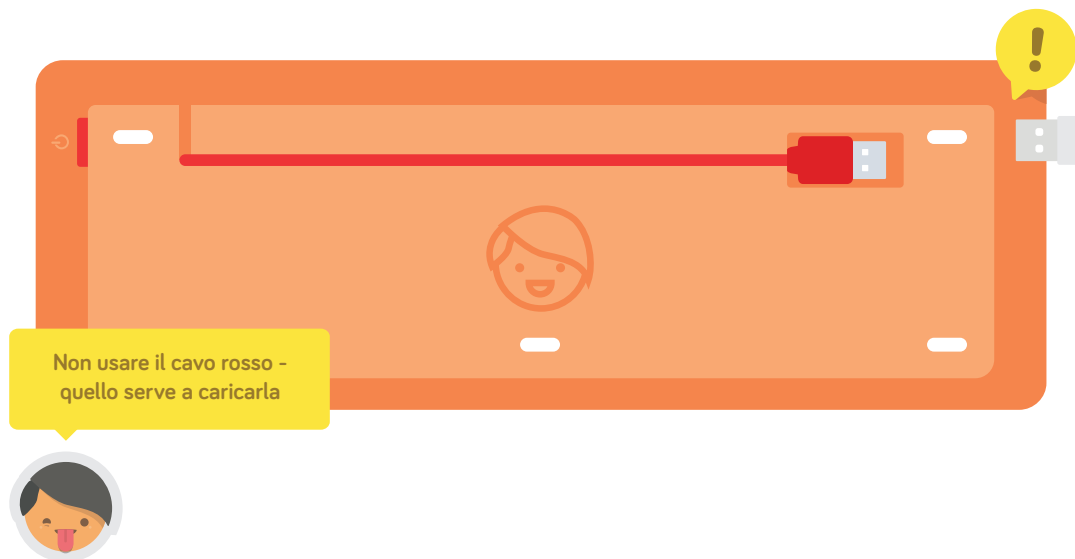


Diamogli qualche nuova idea. Prendi la tua tastiera!

Prendila, girala e premi il bottone di accensione

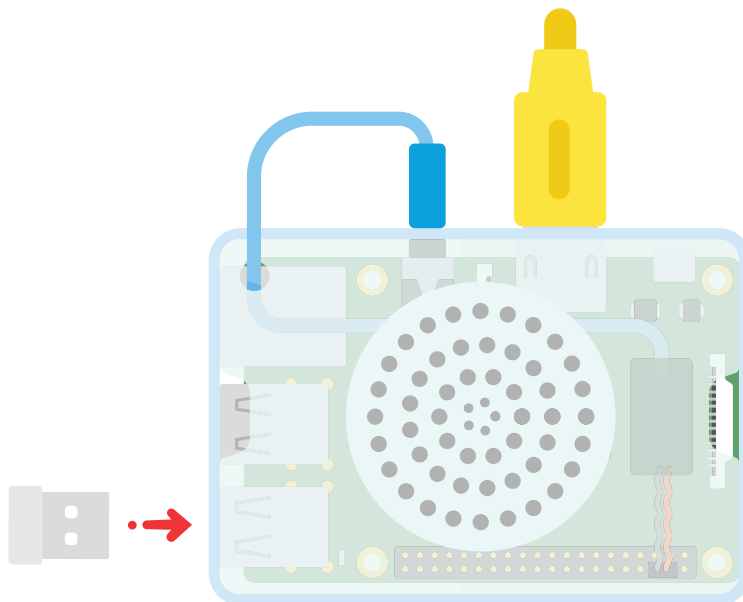


Rimuovi il pezzo bianco

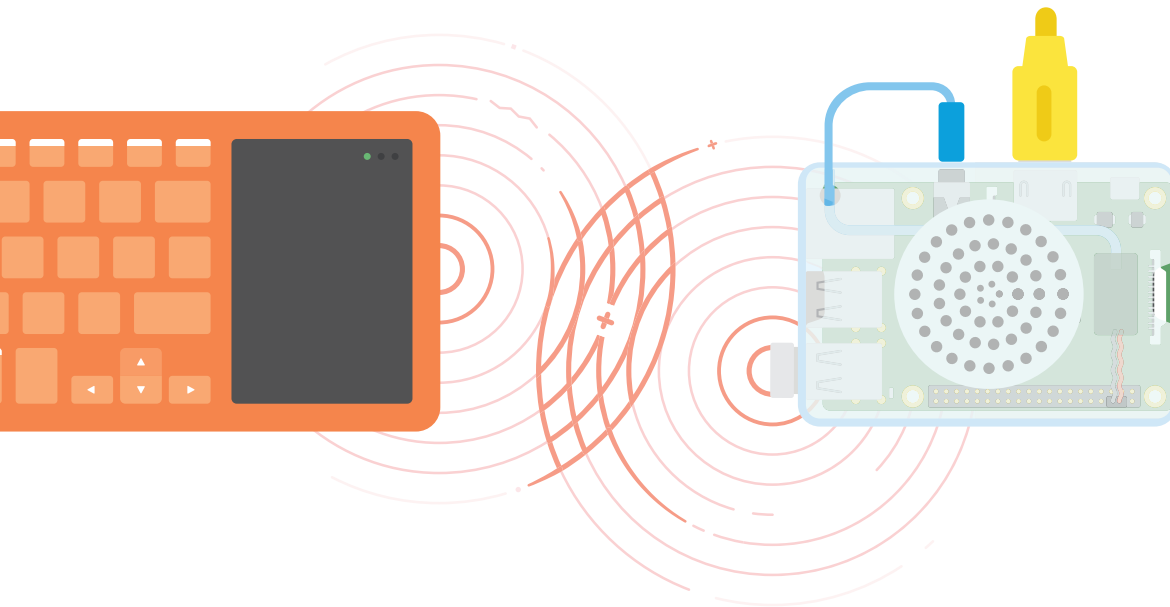


Questo pezzo USB è una antenna radio!

Inserisci questo pezzo nel tuo computer

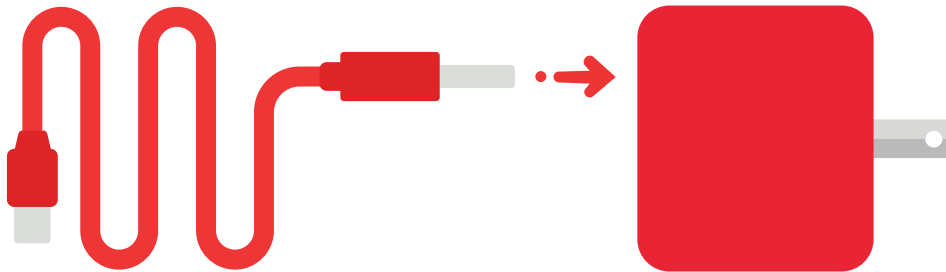


Ora la tastiera ed il cervello sono connessi



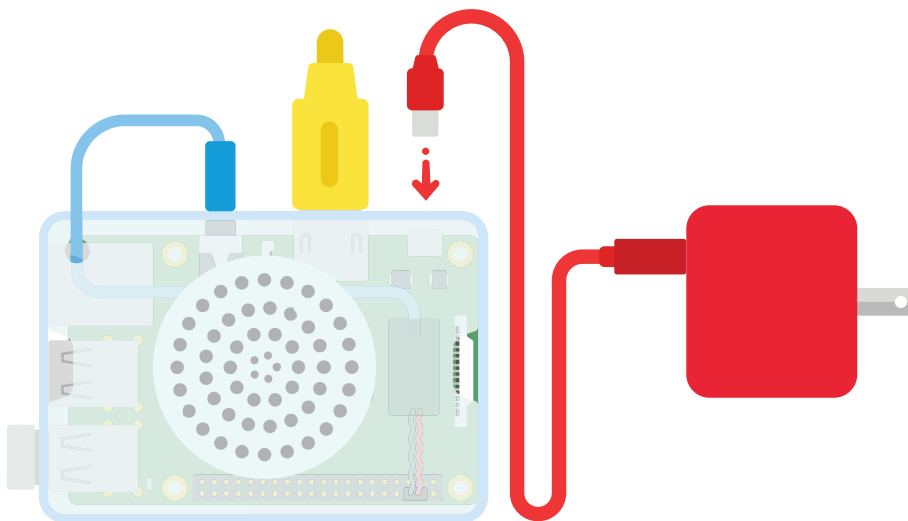
Ci siamo quasi...

Diamogli vita! Prendi i pezzi rossi...

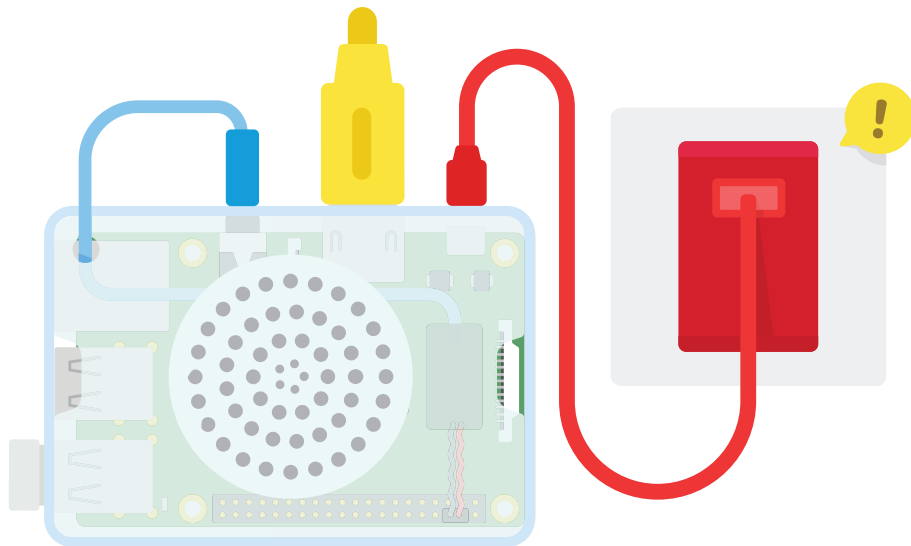


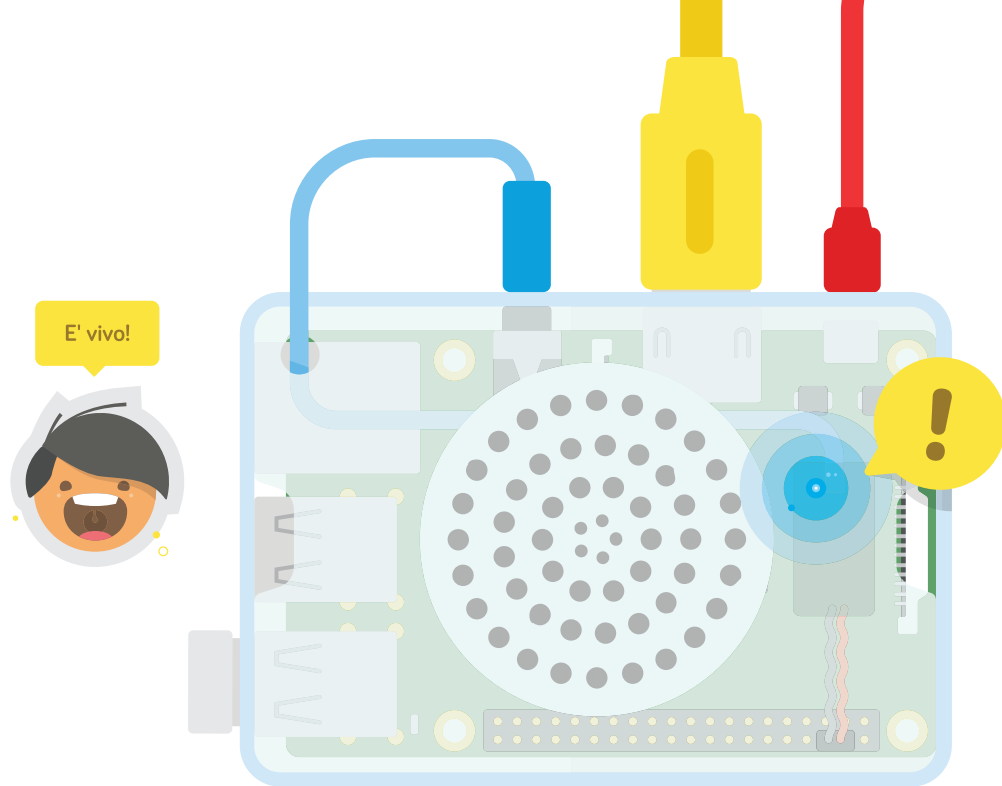
...e inserisci il pezzo finale grande nella spina

Ora prendi il pezzo finale piccolo e collegalo al tuo computer



Inserisci la spina in una presa a muro



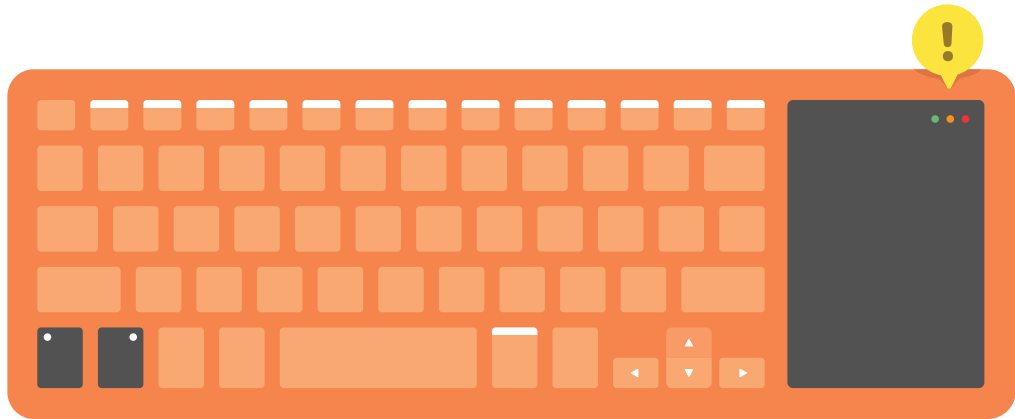


Torna a pagina 12 se non si accende alcuna luce



E non dimenticarti di usare i tuoi adesivi

Le luci sulla tastiera ti dicono come sta



Verde, arancione e rosso hanno significati diversi



Verde
Connessione
radio effettuata



Lampeggi lenti
Accesa, ma
non connessa



Lampeggi veloci
Batteria quasi scarica,
è ora di caricarla!

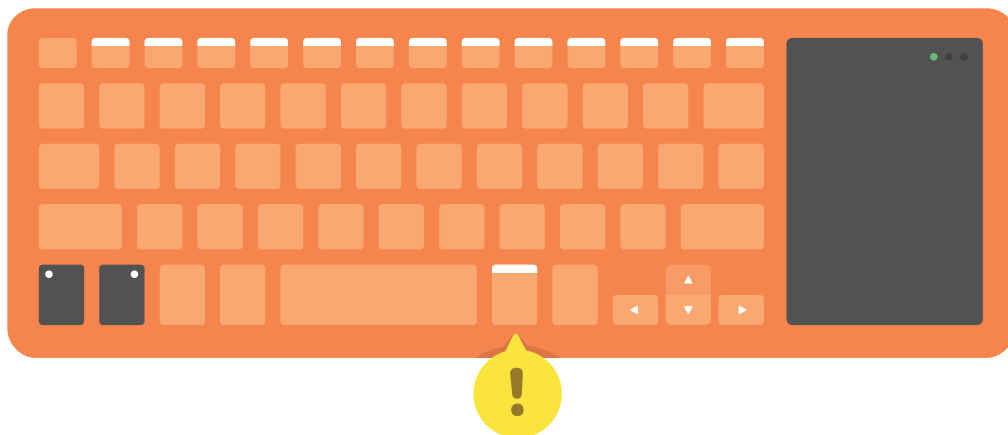


Arancione
Blocco maiuscolo attivato



Rosso
In carica

La tua tastiera ha poteri nascosti



Attiva le funzioni premendo [FN]

Prova queste combinazioni



Esegui il codice
Trasformalo in realtà!



Velocità del mouse
Medio o veloce



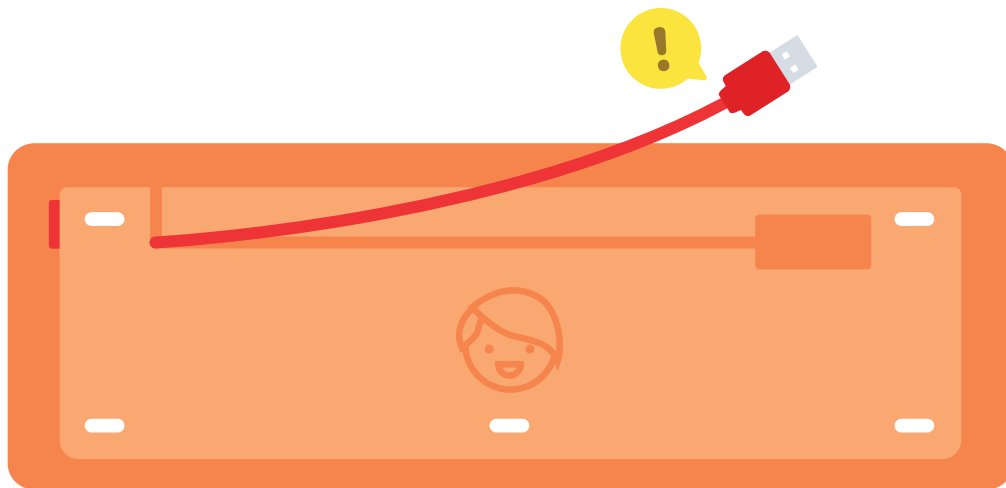
Condividi le tue creazioni
Mostrale ai tuoi amici



Utili per programmare

Tutti questi tasti sono utilizzati frequentemente quando programmi,
quindi assicurati di impararli

La tastiera ha bisogno di essere caricata ogni tanto



Per farlo, collega il cavo rosso al trasformatore o al tuo computer

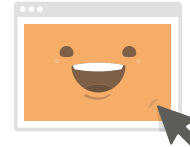
Hai bisogno di aiuto? Vuoi saperne di più?



Supporto
help.kano.me



Community
world.kano.me



Online
kano.me



Forum
world.kano.me/forum



Facebook
[Kano Computing](https://www.facebook.com/KanoComputing)



Twitter
[@teamkano](https://twitter.com/teamkano)

Regulatory Compliance Information

Compliance Statement

The Kano kit conforms with relevant provisions of the RoHS Directive for the European Union.

European Union (EU) Compliance Statement

This product conforms with the requirements of European Directives:

Keyboard: 1999/5/EC.

Raspberry Pi: 2004/108/EC.

PSU: 2006/95/EC and 2004/108/EC.

Europe-EU Declaration of Conformity

This product has been tested and found to conform with the limits for Class B Information Technology Equipment according to the European Standard:

Keyboard: EN301489 / EN300 328 / EN62479 / EN60950.

Raspberry Pi: EN55022.

PSU: EN60950 / EN55022 / EN61000 / EN55024.

Speaker: EN60950 / EN55022 / EN55024.

Federal Communications Commission (FCC) Statement:

The Kano kit conforms with part 15 of the FCC rules.

Operation is subject to the following two conditions:

- (1) This device may not cause harmful interference, and
 - (2) This device must accept any interference received,
- Raspberry Pi FCC ID: 2ABCB-RPI32

Speaker FCC ID: 2ACVK-14G1100A

Keyboard FCC ID: 2ACVKKC-KBR101K

Important

Changes or modifications to this product not authorized by Kano Computing Ltd. could void the FCC compliance and negate your authority to operate the product.

Industry Canada (IC) Statements

Keyboard: This device complies with RSS 210 of Industry Canada. This device meets all requirements of the Canadian interference-causing equipment regulations.

Raspberry Pi: This Class B digital apparatus conforms with Canadian ICES-003 specifications.

PSU: This device complies with the Canadian Class B specifications CSA C22.2 and UL 60950-1.

Speaker: This Class B speaker apparatus conforms with Canadian ICES-003 specifications.

Australia Statement

Keyboard: This product complies with the requirements of Australian ASZ4268.

Raspberry Pi: This product conforms with the Australian Class A Emissions requirements.

PSU: This product complies with Australian standard AS/NZS 60950 and the requirements of all relevant parts of

AS/NZS 4417, of Australian Regulatory Compliance Mark (RCM).

Speaker: This product conforms with the requirements of Australian CISPR22.

Japan Statement

Keyboard: This product complies with the requirements of Japanese ARIB STD-T33.

PSU: This product complies with the requirements of Japan Technical Requirement Appendix 12 J60950 / J55022, and Appendix 4 of the Enforcement Regulations (AC Electric Appliances).

Speaker: This product conforms with the requirements of Japan Technical Requirement Appendix 12 J55022 / J55024.

European Union—Disposal Information



In Common with all Electrical and Electronics Equipment (EEE), the Kano Power Up Kit should be disposed of separately from household waste. The separate collection and recycling of your product at the time of disposal will

help conserve natural resources and ensure that it is recycled in a manner that protects human health and the environment.

You can find warranty and return policies on our website: www.kano.me/pages/terms-of-supply



KANO

A Computer Anyone Can Make™
Anyone Can Make™

COPYRIGHT © KANO COMPUTING LTD 2015.
TUTTI I DIRITTI RISERVATI 16G8001H

