

Building a labelling lifestyle

— Convenient labels dramatically boost efficiency! —

Before



After



NEW Labemo

- Easy to attach and peel off
- Labels attach immediately! No wastepaper!
- Freely attachable and affordable tape
- PC-Connectable for speed and convenience!
- Can print in multiple languages and in any font!
- Printing of handwritten text or illustrations



Before



After



EZ - LABEL PRINTER
LABEL IT!

- Labels stay securely in place!
- Convenient for high-volume printing!
- Tapes in a wide variety of colours and sizes
- Makes attractive labels
- Barcode printing
- Prints up to 6 lines



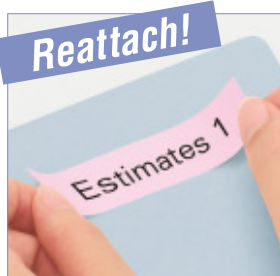
NEW

Labemo

Easy to attach and peel off
for enhanced on-the-job efficiency!



POINT1 No adhesive residue! Easy to reattach!



POINT2

Attach immediately!
No wastepaper!



POINT3

Freely attachable
and affordable tape

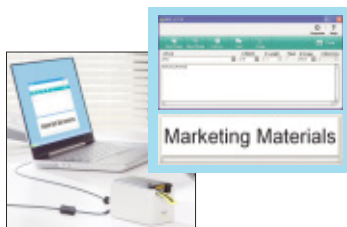


★Actual size

POINT4

PC-Connectable for quick,
convenient label printing!

Input and print text in fonts
and languages installed on a PC.



[Attractive Text]

Decided

Alex Williams

■Date: Sunday, March 31
■Starting time: 10:00 AM
■Description: Year-end physical inventory

★Printing of up to 3 lines is possible with 18mm tape only.

[Multiple Languages]

تسليم الملاحظة

Arabic

ใบแจ้งหนี้

Thai

銷售部

Traditional Chinese

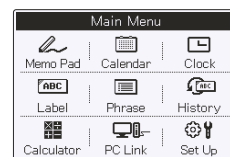
★The screenshots and printed samples shown are examples for purposes of illustration.

★When linked to a PC, depends on the PC environment.

POINT5

Printing of handwritten
text or illustrations

(MEP-T10 only)



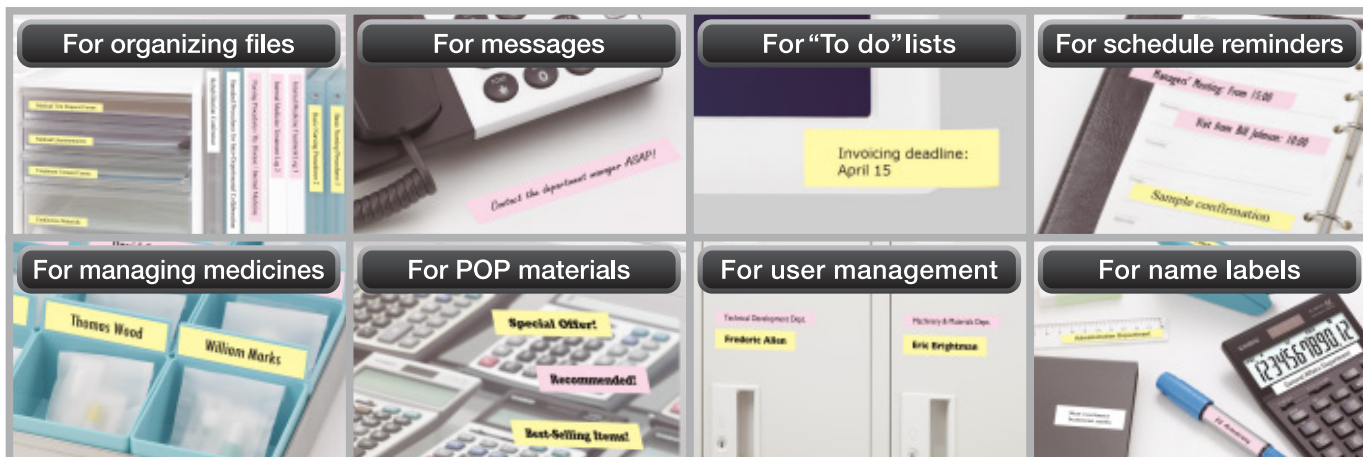
▲Menu screen

Simple touch
panel operation



Contact
Mr. Johnson today!

For labels you want to replace from time to time!



EZ-LABEL PRINTER LABEL IT!

The ideal label printer for a variety of labeling applications



POINT 1

Labels stay securely in place!

Uses tape that stays firmly in place and is suitable for wide-ranging applications



POINT 2

Convenient for high-volume printing!

Auto cutter with half-cut function (KL-7400 only)

Slits only the tape for easy removal from the backing paper

*Continuous printing of up to 100 labels is possible.



POINT 3

Wide variety of colours and sizes

(24mm tape is for the KL-7400/820 only.)



*Actual size

POINT 4

Makes attractive labels

Comes with a variety of label-making functions that make it easy to produce attractive labels

John Thompson

Sans-serif italic (KL-7400/820 only)

John Thompson

Roman (KL-7400/820 only)

12753 12754 12755

Numbering (KL-7400/820 only)

 Urgent

Designed logo printing (KL-7400/820 only)

 Out of stock

Frame printing (KL-7400/820 only)

June 27 experiments

Box

 Telephone List 

Frame printing (KL-7400/820 only)

POINT 5

Barcode printing

(KL-7400/820 only)



4971850185123

Prints up to 6 lines

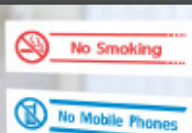
*24 or 18mm tape (KL-7400 only)

< A D . P L A N 2 0 0 9 >
1. T E L E V I S I O N
2. N E W S I T E
3. N E W S P A P E R
4. M A G A Z I N E S
5. C A M P A I G N

*Actual size

For labels you want to stay securely in place!

For instructions



For managing leased equipment



For organizing files



For sorting small articles



For office notices



For preventing careless mistakes



For information plates



For safety management



NEW

Labemo



Touch Panel and PC-Connectable Model

MEP-T10

- Simple touch panel operation
- Printing of handwritten text or illustrations
- Input using a software keyboard
- 3.6-inch touch panel LCD (with backlight)
- Handles 18, 12 and 9mm tape widths
- Prints up to 3 lines (18mm tape)
- 12mm print head / 200 dpi resolution
- Common phrases
- Calendar / Clock / Calculator

Power supply: AC adaptor (included)
4 x AA-size alkaline batteries (sold separately)



Touch Panel



PC-Connectable
[USB Connection]



Labemo tape lineup

[Length: 5 meters]

Width	18mm	12mm	9mm
BLACK ON WHITE	XA-18WE1	XA-12WE1	XA-9WE1
BLACK ON YELLOW	XA-18YW1	XA-12YW1	XA-9YW1
BLACK ON PINK	XA-18PK1	XA-12PK1	XA-9PK1

*Labemo dedicated tapes cannot be used with LABEL IT! products.



PC-Connectable Model

MEP-U10

- Input from a PC
- Simple printing of text from e-mail or the Web
- Handles 18, 12 and 9mm tape widths
- Prints up to 3 lines (18mm tape)
- 12mm print head / 200 dpi resolution
- Common phrases

Power supply: AC adaptor (included)



PC-Connectable
[USB Connection]



PC Software Operating Environment

OS	Microsoft® Windows® 8, Windows® 7, Windows Vista®, Windows® XP	Memory	128 MB minimum memory / Memory recommended for the OS
PC	PC/AT compatible machine with the following specifications: • One of the above OS pre-installed • A CPU recommended for the OS • A USB port as standard equipment	Hard disk	120 MB minimum free hard disk space
		CD drive	For installation

• Other conditions should comply with the recommended environment for the above operating systems. • The software may not run correctly depending on hardware configuration. • The software does not run on 64-bit versions of Windows® XP. • The software is not warranted to run on operating systems that have been upgraded or otherwise modified from the pre-installed state. • Follow the precautions about software in the operation manual included with the product. *Microsoft, Windows, and Windows Vista are registered trademarks or trademarks of Microsoft Corporation in the United States and other countries. *Other company and product names are registered trademarks or trademarks of their respective owners.

EZ-LABEL PRINTER LABEL IT!

Multifunction model with half-cut function that's handy for high-volume label printing

KL-7400

- Large, easy-to-read, 16-digit, 4-line LCD
- *Input area 3 lines
- Handles 24, 18, 12, 9 and 6mm tape widths
- Prints up to 6 lines (24 or 18mm tape)
- 12mm print head / 200 dpi resolution
- Auto cutter with half-cut function
- Designed logo printing
- Barcode printing
- 519 illustrations and symbols
- Numbering

Power supply: AC adaptor (included)
8 x AA-size alkaline batteries (sold separately)



Accepts
24mm
tape

Multifunction model that handles tape widths up to 24mm

KL-820

- Large, easy-to-read, 16-digit, 4-line LCD
- *Input area 3 lines
- Handles 24, 18, 12, 9 and 6mm tape widths
- Prints up to 3 lines (24 or 18mm tape)
- 12mm print head / 200 dpi resolution
- Designed logo printing
- Barcode printing
- 87 special characters and symbols
- Numbering

Power supply: AC adaptor (optional)
6 x AA-size alkaline batteries (sold separately)



Accepts
24mm
tape

Compact model

KL-120

- Large 16-digit, 2-line LCD
- Handles 18, 12, 9 and 6mm tape widths
- Prints up to 2 lines (18 or 12mm tape)
- 12mm print head / 200 dpi resolution
- 87 special characters and symbols

Power supply: 6 x AA-size alkaline batteries (sold separately)



Basic model

KL-60

- 4-digit, 1-line LCD
- Handles 12, 9 and 6mm tape widths
- Prints up to 2 lines (12 or 9mm tape)
- 5mm print head / 160 dpi resolution
- 46 special characters and symbols

Power supply: 6 x AA-size alkaline batteries (sold separately)

LABEL IT! tape lineup

[Length: 8 meters]

Width	24mm	18mm	12mm	9mm	6mm
BLACK ON WHITE	XR-24WE1	XR-18WE1	XR-12WE1	XR-9WE1	XR-6WE1
BLACK ON CLEAR	XR-24X1	XR-18X1	XR-12X1	XR-9X1	XR-6X1
BLACK ON RED	XR-24RD1	XR-18RD1	XR-12RD1	XR-9RD1	XR-6RD1
BLACK ON YELLOW	XR-24YW1	XR-18YW1	XR-12YW1	XR-9YW1	XR-6YW1
BLACK ON BLUE	XR-24BU1	XR-18BU1	XR-12BU1	XR-9BU1	—
BLACK ON GREEN	XR-24GN1	XR-18GN1	XR-12GN1	XR-9GN1	XR-6GN1
BLACK ON GOLD	—	XR-18GD1	XR-12GD1	XR-9GD1	—
BLACK ON SILVER	—	XR-18SR1	XR-12SR1	XR-9SR1	—

Colour Letters

Width	18mm	12mm	9mm
RED ON WHITE	XR-18WER1	XR-12WER1	XR-9WER1
BLUE ON WHITE	XR-18WEB1	XR-12WEB1	XR-9WEB1



*LABEL IT! dedicated tapes cannot be used with Labemo products.

<http://world.casio.com>

CASIO

CASIO COMPUTER CO., LTD.

Tokyo, Japan

*Designs and specifications are subject to change without notice.

BS1212-010001A [DI] Printed in Japan