

# Troubleshooting

## Entering Text and Symbols

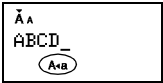
### ► Switching Upper Case/Lower Case



A+O

Upper case ((A+O) ON)

Lower case ((A+O) OFF)



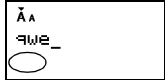
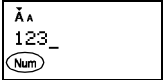
### ► Entering Numbers



Num

Num Lock ON

Num Lock OFF

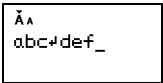


### ► Making a Two Line Label

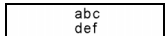
1. Enter the text for the first line and press **[J]**.
2. Enter the text for the second line and press **[E]**.

- Do not press **[J]** after the second line; otherwise the "Line Limit!" error message will appear.
- Use either 9mm or 12mm wide tape for two line text.

Display



Label image



### ► Entering Symbols

Example: Entering **[P]**



**[P]** → **[P]** [Pictograph] **[J]**

→ **[P]** [A7] **[J]**

Display



Label image



- Pictographs are displayed on the LCD display with the corresponding alphabet and number of the Pictograph table. For the Pictograph table and Pictograph List, refer to "Symbols".

## Designing Labels

- 1 Press **[F]**, use **[P]** to select a function under column [A], and then press **[J]**. (The function can also be selected with the shortcut keys listed under column [C]. (**[F]** + **[Q]** to **[T]**))
- 2 Use **[P]** to select a setting listed under column [B], and then press **[J]**.

Design	[A]	[B]	Label image	[C]
Size	Size	Large* <sup>1</sup>	J.SMITH	<b>[F]</b> + <b>[Q]</b> <sup>1</sup>
		Small	J.SMITH	
Width	Width	Normal* <sup>1</sup>	J.SMITH	<b>[F]</b> + <b>[W]</b> <sup>2</sup>
		×2	J.SMITH	
		×1/2	J.SMITH	
Style	Style	Normal* <sup>1</sup>	J.SMITH	<b>[F]</b> + <b>[E]</b> <sup>3</sup>
		Bold	J.SMITH	
		Outline	J.SMITH	
		Shadow	J.SMITH	
		Italic	J. SMITH	
		Italic Bold	J. SMITH	
		Italic Outline	J. SMITH	
		Italic Shadow	J. SMITH	
		Vertical	ㄋ · ㄋ Σ - ㄋ ㄋ	
Underline/Frame	Undl/Frame	Off* <sup>1</sup>	ABC	<b>[F]</b> + <b>[R]</b> <sup>4</sup>
		Underline	ABC	
		Round	ABC	
		Leaf	ABC	
		Tile	ABC	
		Star	ABC	
		Heart	ABC	
		Square	ABC	
		Bubble	ABC	
Label length	Label Length	Auto* <sup>1</sup> /30mm - 300mm* <sup>2</sup>	The label is printed with the specified length.	<b>[F]</b> + <b>[T]</b> <sup>5</sup>

\*1 Default setting. To return to the default setting, press **[P]**.

\*2 You can select the length by entering the length with the Number Keys **[Q]**~**[P]**. To return to [Auto], press **[P]**.

## Printing Labels

### ► Text Preview

You can preview the text before printing.



- The LCD shows the whole text and the label length (mm/ inch), then returns to the original text.
- Only the text can be previewed, not the style, size, underline/frame or any additional features.

### ► Feeding (Tape Feed)



**[P]** + **[E]**

The machine will feed 25mm of tape, which may be needed when installing a new tape cassette.

### ► Printing



**[P]**

- To prevent damage to the tape, do not touch the cutter lever while the message "Printing..." or "Feeding..." is displayed.
- To cut off the label, push in the tape cutter lever on the upper-left corner of the machine.
- Peel the printed label from backing and apply the label.

### ► Making Copies (**[F]** + **[E]**)

You can print up to 9 copies of each label.



**[F]** → **[P]** [Copies] **[J]**

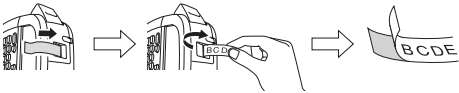
→ **[P]** Set 1-9? 5 **[J]**

- You can also select the number of copies by entering with the Number Keys **[Q]**~**[P]**.

### ► Removing the Label Backing

This machine is equipped with a peeler that allows you to easily remove the backing from labels.

1. Insert the label, with the printed surface facing down, as far as possible into the built-in peeler.
2. Fold back the label to the right and quickly pull out the label. The end of the backing is separated from the label.



## Resetting the P-touch

You can reset the P-touch when you want to initialize the settings, or in the event that the P-touch is not working properly.

- 1 Press **[P]** to turn off the power.
- 2 While holding down **[P]** and **[R]**, press **[P]** to turn on the power.
- 3 Release **[P]**, and then release **[P]** and **[R]**.  
The internal memory is reset, and all text, settings and stored files are cleared.

## DECO MODE

This function allows you to create unique labels by using some built-in templates. You can choose from 8 types of templates.

Design	Label Image	Cooling
1	ABC ABC ABC ABC	
2	ABC ABC ABC ABC	
3	ABC ABC ABC ABC ABC ABC ABC ABC ABC ABC ABC ABC	
4	ABC ABC ABC ABC ABC ABC ABC ABC ABC ABC ABC ABC	
5	ABC ABC ABC ABC ABC ABC ABC ABC ABC ABC ABC ABC	
6	ABC ABC ABC ABC ABC ABC ABC ABC ABC ABC ABC ABC	✓
7	ABC ABC ABC ABC ABC ABC ABC ABC ABC ABC ABC ABC	✓
8	ABC ABC ABC ABC ABC ABC ABC ABC ABC ABC ABC ABC	✓

Example: Design 8



**[P]** → **[P]** [Design 8] **[J]**

→ Label Length → **[P]** [Auto/

30-200mm] **[J]** → ABC **[J]**

→ **[P]** [Print] **[J]**

### ● NOTE

- Some Deco Mode formats may require cooling (indicated on the above table). If the print head becomes too hot, your machine will stop printing and automatically start to cool down. The cool down time will be displayed. Once the print head is cool, printing will automatically continue. Do not touch the P-touch while cooling.
- Only one line of text can be entered in DECO MODE.
- Depending on the selected format, the entire text entered may not be printed.
- The formats of the DECO MODE templates cannot be changed.
- Symbols surrounded by a box in the Basic table are available in DECO MODE. For the Basic table, refer to "Symbols".
- To clear all the entered text, press **[P]** and **[R]**. "Clear?" is displayed. Press **[J]** to clear the text, or **[R]** to cancel this operation.
- When you access DECO MODE, your most recently printed DECO MODE text and label length will be recalled.
- Press **[R]** to return to the previous step.
- To exit DECO MODE, press **[R]** until the display returns to the text entry screen. You can also exit this mode by pressing **[P]** when [Print] is displayed, and selecting [Quit].
- 12mm wide tape cassettes are recommended when using the DECO MODE feature.
- The maximum label length is 200mm for DECO MODE.
- When [Auto] is selected for [Label Length], the label will automatically adjust to the correct length for printing the text one time.
- Press **[P]** to return to [Auto] for [Label Length] mode.

## Saving Label Files

### ► Memory (**[F]** + **[U]**)

You can save your original labels on to your machine. Up to three labels can be saved and recalled for printing at a later time. You can also edit and overwrite the stored label.



**[F]** P-touch\_

→ **[F]** → **[P]** [File] **[J]**

To Save: → **[P]** [Save] **[J]** →

→ **[P]** **[P]** **[J]**

To Print: → **[P]** [Print] **[J]** →

→ **[P]** **[P]** P-touch **[J]**

To Open: → **[P]** [Open] **[J]** →

→ **[P]** **[P]** P-touch **[J]**

### ● NOTE

If you try to store a label when there is already a label stored to that number, a message "Overwrite?" will appear. Press **[J]** to save your new label. Press **[R]** to cancel.

## Symbols

The following symbols are available.

Basic

01	.	.	:	:	"	'	•
02	@	-	&	~	_	\	/
03	#	%	?	!	¿	¡	*
04	+	-	×	÷	±	=	✓
05	(	)	[	]	<	>	\$
06	→	←	↑	↓	®	©	™
07	\$	¢	€	£	¥	°	♪
08	α	β	γ	δ	μ	Ω	
09	0	1	2	3	4	5	6
10						1	2
11	7	8	9	0	1	2	3
12	●	○	■	□	★	☆	♣
13	☺	♥	♡	♦	◇	♣	♠

Pictograph

	1	2	3	4	5	6	7
A	☹	⚠	☢	☣	☠	☎	☎
B	📧	📧	📧	📧	📧	📧	📧
C	📧	📧	📧	📧	📧	📧	📧
D	📧	📧	📧	📧	📧	📧	📧
E	📧	📧	📧	📧	📧	📧	📧
F	📧	📧	📧	📧	📧	📧	📧
G	📧	📧	📧	📧	📧	📧	📧
H	📧	📧	📧	📧	📧	📧	📧
I	📧	📧	📧	📧	📧	📧	📧
J	📧	📧	📧	📧	📧	📧	📧
K	📧	📧	📧	📧	📧	📧	📧
L	📧	📧	📧	📧	📧	📧	📧

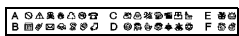
- To display the next group, press **[P]**.
- To cancel operations, press **[R]**.
- Symbols surrounded by a box in the Basic table are available in DECO MODE.
- The rows of symbols (A to L) in the Pictograph table can be selected by pressing the corresponding character.

### ► Printing the Pictograph List



**[P]** → **[P]** [Pictograph List] **[J]**

Label image



## Using Optional AC Adapter

- 1 Insert the small plug on the adapter cord into the AC adapter socket on the top end of the machine.
- 2 Insert the power plug into the nearest standard electrical outlet.

### ● NOTE

For memory back up, we recommend using AAA alkaline batteries (LR03) together when using the AC adapter.

## Specifications

Dimensions: (W × D × H)	Approx. 156 × 111 × 56.5mm
Weight:	Approx. 255 g (without batteries and tape cassette)
Power supply:	Four AAA alkaline batteries (LR03) Optional AC adapter (AD-24ES)
Tape cassette:	Brother M tape (width) : 9mm, 12mm

## Contact Information

Contact may differ by country.  
See the website <http://www.brother.eu/>