



Computer visual.

GROUND FLOOR
Apartments 436 & 438

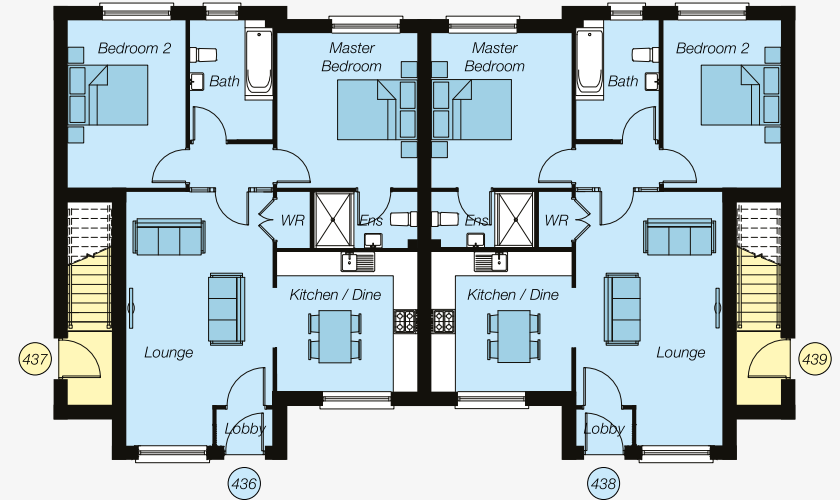
Entrance Lobby	
Lounge (max)	20'6" x 10'10"
Kitchen / Dine	11'4" x 11'3"
Master Bedroom	12'6" x 11'4"
Ensuite	
Bedroom 2	13'7" x 9'5"
Bathroom	
Total Floor Area: 836 sq. ft. approx.	

FIRST FLOOR
Apartments 437 & 439

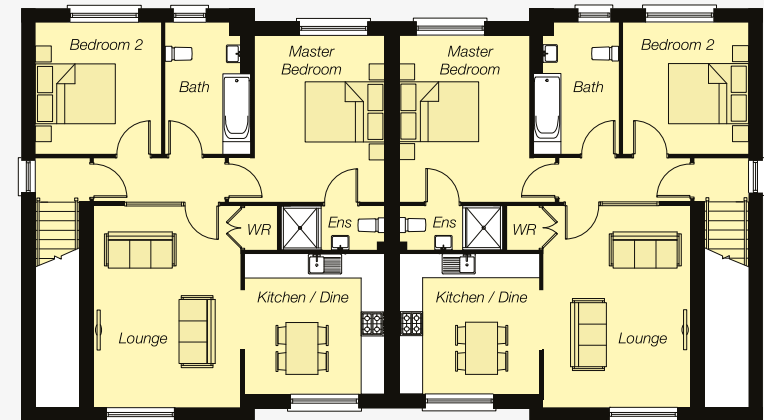
Entrance Lobby	
Lounge	16'4" x 11'10"
Kitchen / Dine	11'4" x 11'3"
Master Bedroom (min)	13'5" x 10'6"
Ensuite	
Bedroom 2	10'7" x 10'1"
Bathroom	
Total Floor Area: 843 sq. ft. approx.	

The Amberley Apartments

GROUND FLOOR



FIRST FLOOR



*Nestled on the edge of Millmount
in a charming enclave.*



These particulars do not constitute any part of an offer or contract. None of the statements contained in these particulars are to be relied on as statements or representations of fact and intending purchasers must satisfy themselves by inspection or otherwise as to the correctness of each of the statements contained in these particulars. All measurements of area are quoted as Net Sales Area which is calculated in accordance with the RICS Code of Measuring Practice (8th Edition) APP 21. Configurations of kitchens, bathrooms and wardrobes may be subject to alteration from those illustrated without prior notification. Purchasers should satisfy themselves as to the current specification at the time of booking. The Vendor does not make or give, and neither the Selling Agent, nor any person in their employment, has any authority to make or give any representation or warranty whatever in relation to any property. Computer visuals are for illustration only. Plans are not to scale and all dimensions shown are approximate.