

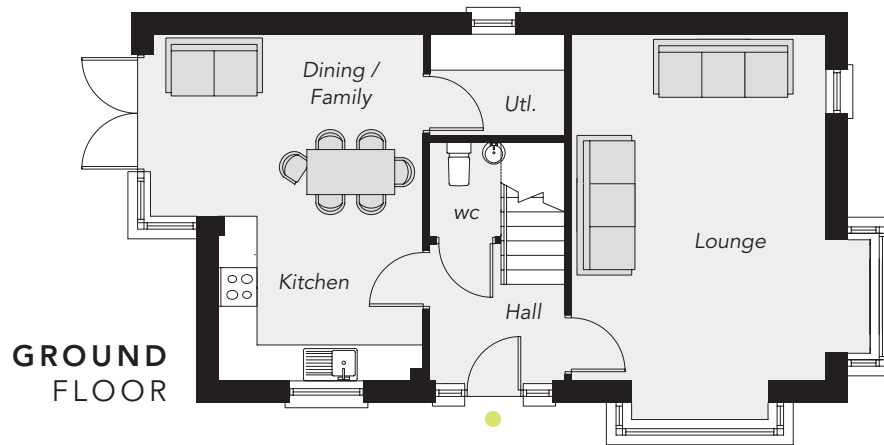
THE BARBON

TYPE MV6.2 - SITES 12 & 19

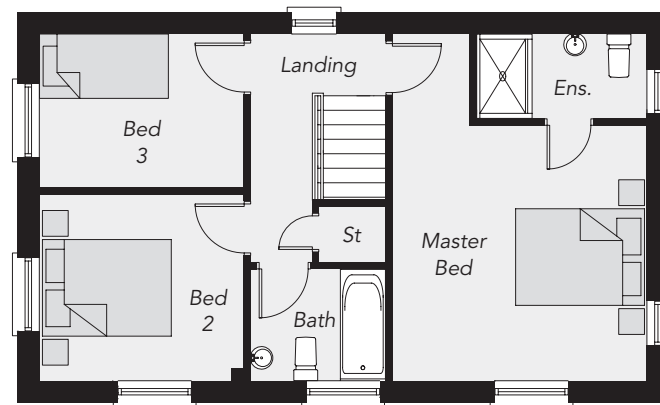


Computer visual.

Bush Hall
BUSH ROAD ANTRIM



GROUND FLOOR



FIRST FLOOR

THE BARBON

TOTAL FLOOR AREA
1,130 sq. ft. approx.



Telephone 028 9446 6777
www.country-estates.com



GROUND FLOOR

Entrance Hall
Lounge plus bay 17'6" x 12'9"
Kitchen 10'3" x 8'3"
Dining / Family max 13'7" x 9'1"
Utility Room
WC

FIRST FLOOR

Master Bedroom min 12'10" x 12'9"
Ensuite
Bedroom 2 10'3" x 9'4"
Bedroom 3 10'3" x 7'8"
Bathroom

LaganHomes
www.laganhomes.com

These particulars do not constitute any part of an offer or contract. None of the statements contained in these particulars are to be relied on as statements or representations of fact and intending purchasers must satisfy themselves by inspection or otherwise as to the correctness of each of the statements contained in these particulars. All measurements of area are quoted as Net Sales Area which is calculated in accordance with the RICS Code of Measuring Practice (6th Edition) APP 21. Configurations of kitchens, bathrooms and wardrobes may be subject to alteration from those illustrated without prior notification. Purchasers should satisfy themselves as to the current specification at the time of booking. The Vendor does not make or give, and neither the Selling Agent, nor any person in their employment, has any authority to make or give any representation or warranty whatever in relation to any property. Computer visuals are for illustration only. Plans are not to scale and all dimensions shown are approximate.